



<http://researchspace.auckland.ac.nz>

ResearchSpace@Auckland

Copyright Statement

The digital copy of this thesis is protected by the Copyright Act 1994 (New Zealand).

This thesis may be consulted by you, provided you comply with the provisions of the Act and the following conditions of use:

- Any use you make of these documents or images must be for research or private study purposes only, and you may not make them available to any other person.
- Authors control the copyright of their thesis. You will recognise the author's right to be identified as the author of this thesis, and due acknowledgement will be made to the author where appropriate.
- You will obtain the author's permission before publishing any material from their thesis.

To request permissions please use the Feedback form on our webpage.

<http://researchspace.auckland.ac.nz/feedback>

General copyright and disclaimer

In addition to the above conditions, authors give their consent for the digital copy of their work to be used subject to the conditions specified on the Library Thesis Consent Form.

THE UNIVERSITY OF AUCKLAND, 1971.

THE ECOLOGY, POPULATION DYNAMICS, AND ENERGETICS
OF SOME SOFT SHORE MOLLUSCS.

by

MICHAEL FRANCIS LARCOMBE.

A thesis submitted
toward the degree of
Doctor of Philosophy
in Zoology.

UNIVERSITY OF SUEZ CANAL

LIBRARY

THESIS

72-27

cop.1

Thesis

72-27

cop.1

Plate 1. The Whangateau Harbour.

Taken from south-west of Point Wells. Ti Point is in the background.

UNIVERSITY OF AUCKLAND LIBRARY



3 5556 50059693 7

UNIVERSITY OF AUCKLAND LIBRARY
Unless this book is returned on or before the date
stamped below, fines will be charged.
Return in one day if RECALLED.

REFERENCE COPY

DISCHARGED
17 APR 2007

DISCHARGED
17 APR 2007
2

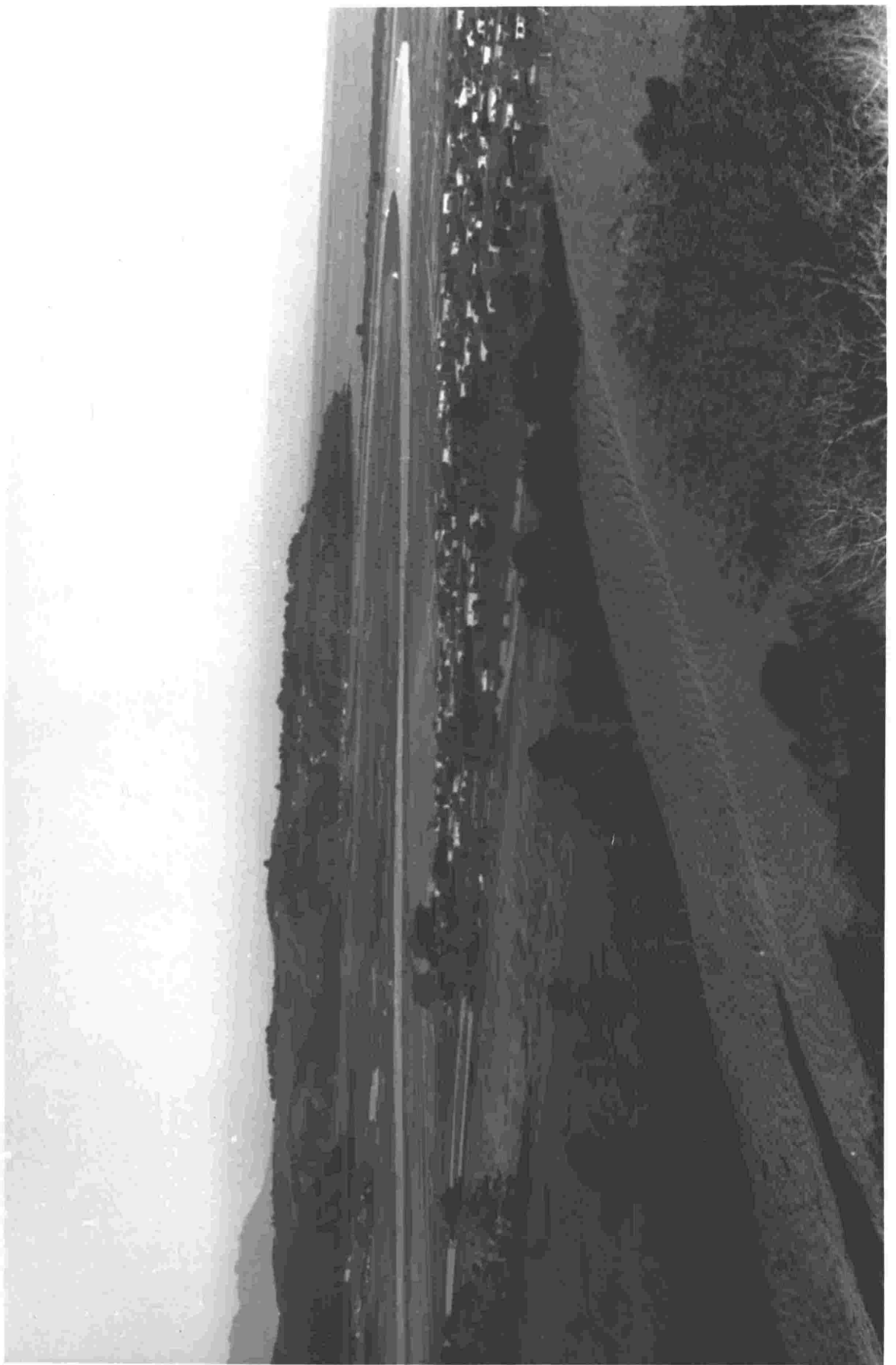
UNIVERSITY OF
AUCKLAND LIBRARY

Unless this book is returned
on or before the date
stamped above, fines will
be charged

THESIS

42 - 27

Cop. 1



CONTENTS.

1.	INTRODUCTION	1
2.	<u>CHIONE STUTCHBURYI</u> : POPULATION STRUCTURE	4
2.1.	Length-frequencies.	
2.2.	Age structure.	4
2.3.	Sex structure.	6
2.4.	Population density factors.	7
2.5.	Variation in shell morphology.	7
2.6.	Summary.	7
3.	<u>COMINELLA</u> SPECIES: POPULATION STRUCTURE.	9
3.1.	Species composition of populations.	9
3.2.	Length-frequencies.	9
3.3.	Age structure.	9
3.4.	Lattitudinal variation in population structure.	10
3.5.	Sex ratios of <u>Cominella</u> populations.	10
3.6.	Variation in shell morphology of <u>Cominella</u> species.	12
3.7.	Summary.	13
4.	GROWTH OF <u>CHIONE STUTCHBURYI</u> .	14
4.1.	Measurement of growth.	14
4.1.1.	Growth rings.	14
4.1.2.	Growth increment of marked or segregated individuals.	16
4.1.3.	Analysis of growth from length-frequency distributions	16
4.1.4.	Analysis of growth by following one year class.	17
4.2.	External indicators of relative growth rates.	17
4.2.1.	Strial spacing.	17
4.2.2.	Colour of the inside of the shell.	18

4.2.3.	Morphological variation in the shell.	19
4.2.4.	Variation in shell thickness.	19
4.3.	— Factors determining variation in growth rates of <u>Chione stutchburyi</u> populations.	20
4.3.1.	— The period of submergence.	20
4.3.2.	— Position within a harbour or estuary.	22
4.3.2.(i)	Variation in available food.	23
4.3.2.(ii)	Dilution of food by fresh water influx.	23
4.3.2.(iii)	The amount of food in the water.	24
4.3.3.	Substrate influence.	26
4.3.4.	Population density.	27
4.4.	<u>Chione</u> growth in the Whangateau Harbour: Seasonal growth.	28
4.4.1.	Determination of seasonal growth pattern for natural populations.	28
4.5.	<u>Chione</u> growth at Snell's Beach.	30
4.6.	<u>Chione</u> growth at Cheltenham.	31
4.7.	<u>Chione</u> growth in the Wellington area.	33
4.7.1.	Pauatahanui Harbour.	33
4.7.2.	Wellington Harbour.	33
4.8.	<u>Chione</u> growth in the Heathcote-Avon Estuary.	34
4.9.	<u>Chione</u> growth in the Otago Harbour.	35
4.10.	Discussion.	38
4.10.1.	Methods of determining growth.	38
4.10.2.	Expression of growth.	39
4.10.3.	Factors influencing growth rate.	39
4.10.3.A.	Period of submergence.	39
4.10.3.B.	Variation in feeding rate.	40
4.10.3.C.	Available food.	41
4.10.3.D.	Effect of substrate type on growth rate.	41
4.10.3.E.	Salinity effects on growth.	42
4.10.3.F.	Temperature effects on growth: Seasonal growth/	42

4.10.3.G. Temperature effects on growth: Lattitudinal variation.	43
4.10.3.H. Influence of crowding on growth.	44
4.10.4. Variation in growth rate within populations.	44
4.10.4.A. Variation in growth rate with age.	45
4.10.4.B. Variation in growth rate with size.	46
4.10.5. Maximum age attained by <u>Chione stutchburyi</u> .	47
4.11. Summary.	48
5. GROWTH OF <u>COMINELLA</u> SPECIES.	49
5.1. Methods of studying growth in gastropods.	49
5.1.1. Analysis of length-frequency curves.	50
5.1.2. Following one year class.	50
5.1.3. Analysis of growth, using increments of individuals of different sizes.	51
5.1.3.A. Marking selected sizes only.	51
5.1.3.B. Marking of all sizes.	51
5.2. Marking techniques.	51
5.3. The populations studied.	53
5.4. Recapture of marked animals.	53
5.4.1. Recovery on foot.	53
5.4.2. Recovery by snorkelling.	54
5.5. Recording of data.	55
5.6. Calculation of growth of <u>Cominella</u> species.	55
5.7. Growth of <u>Cominella</u> species under artificial conditions.	61
5.8. The nature of the growth curve.	64
5.9. Variation in growth rate of populations from different areas.	65
5.9.1. Range of variation.	65
5.9.2. Sublittoral growth.	67
5.9.3. Lattitudinal variation.	67
5.10. Variation in growth rate within a population.	68

5.10.1.	Factors determining variation: Availability of food.	68
5.10.2.	Variation in growth rates of the two sexes.	68
5.10.3.	The seasonal nature of growth.	69
5.10.4.	Maximum size and age attained by <u>Cominella</u> species.	70
5.11.	Summary.	71
6.	<u>CHIONE</u> REPRODUCTION.	
6.1.	The cycle of gonad development.	72
6.1.1.	Determination of the quantity of gonad produced.	72
6.1.2.	Gonad maturation cycle.	73
6.2.	Discussion.	73
7.	<u>CHIONE</u> SETTLEMENT.	
7.1.	Introduction.	76
7.2.1.	Recruitment to established adult beds.	77
7.2.2.	Recruitment to areas with low <u>Chione</u> density	77
7.2.3.	Recruitment at Snell's Beach.	78
7.2.4.	Recruitment at Cheltenham.	78
7.3.	Period of recruitment.	80
7.4.	Summary.	81
8.	<u>COMINELLA</u> REPRODUCTION.	
8.1.	Introduction.	82
8.2.	Reproduction of <u>Cominella maculosa</u> .	83
8.3.	Reproduction of <u>Cominella adspersa</u> .	86
8.4.	Reproduction of <u>Cominella glandiformis</u>	88
8.5.	Reproduction of <u>Cominella virgata</u> .	89
8.6.	Discussion.	90
8.6.1.	Copulation.	90
8.6.2.	Spawning potential.	90
8.6.3.	Gregarious spawning.	90

8.6.4.	Aggregation by spawning females of <u>Cominella</u> species.	91
8.6.4.1.	Attraction to a suitable area.	92
8.6.4.2.	Formation of the aggregation by laying females.	93
8.6.5.	Advantages of mass spawning.	94
8.7.	Summary.	96
9.	<u>CHIONE</u> MORTALITY.	97
9.1.1.	Predation by <u>Cominella</u> species.	97
9.1.2.	Effect of migration by <u>Cominella</u> species.	98
9.1.3.	Differential mortality of <u>Chione</u> due to size selection by <u>Cominella</u> species.	99
9.2.	Predation by other gastropods.	99
9.3.	Predation by birds.	101
9.4.	Predation by fish.	103
9.5.	Exploitation of <u>Chione</u> by man.	103
9.6.	Population density and mortality.	104
9.7.	Mortality of <u>Chione</u> by environmental disruption.	104
9.8.	Effects of other organisms on <u>Chione</u> mortality.	105
9.8.1.	Organisms attached to the outside of the shell.	105
9.8.2.	Animals boring in the shell.	106
9.8.3.	Parasitism.	106
9.9.	The Heathcote-Avon Estuary: Pollution and <u>Chione stutchburyi</u> .	106
9.9.1.	The effect of green algae on <u>Chione</u> mortality.	108
9.9.2.	Sediment alteration and <u>Chione</u> mortality.	110
9.10.	Summary.	112.
10.	MORTALITY OF <u>COMINELLA</u> SPECIES.	113
10.1.	Juvenile mortality.	113

10.2.	Adult mortality.	113
11.	BEHAVIOUR OF <u>CHIONE STUTCHBURYI</u> .	
11.1.	Normal position in the substrate.	117
11.2.	Maintenance of position in the substrate.	117
11.3.	Movement of <u>Chione</u> .	118
11.4.	<u>Chione</u> feeding.	119
12.	<u>COMINELLA</u> BEHAVIOUR.	120
12.1.	Behaviour with the tidal cycle.	120
12.2.	Diurnal behaviour.	121
12.3.	Movements of <u>Cominella</u> species.	121
12.3.1.	Rate of movement.	122
12.3.2.	Movement rate and temperature.	123
12.3.3.	Movement rate and salinity variation.	123
12.3.4.	Migrations by <u>Cominella</u> species.	123
12.3.4.A.	Migration to an area with attractive food.	124
12.3.4.B.	Migration from an area with reduced food supply.	124
12.3.4.C.	Migration from areas with good recruitment.	125
12.3.4.D.	Migrations associated with egg laying.	125
12.4.	Behaviour under reduced salinity conditions.	125
13.	FEEDING OF <u>COMINELLA</u> SPECIES.	128
13.1.	Scavenging.	129
13.1.1.	The resting phase.	129
13.1.2.	The searching phase.	130
13.1.3.	Oriented approach.	131
13.1.3.A.	From the resting phase.	131
13.1.3.B.	From the searching phase.	132
13.1.4.	Feeding, and formation of the feeding pack.	133
13.2.	Predation.	133
13.2.1.	Attack by chipping the shells of bivalve prey.	133
13.2.2.	Drilling the shells of bivalve prey.	134

13.2.3.	Attacking live gastropods.	136
13.3.	Feeding of <u>Cominella</u> species in the laboratory.	136
13.4.	Feeding rate of <u>Cominella</u> species.	137
13.5.	The relationship between predator size and prey size.	137
13.6.	Summary.	141
14.	COMPETITION BETWEEN <u>COMINELLA</u> SPECIES.	142
14.2.	Possible advantages of pack feeding.	144
14.2.1.	Full utilization of food.	144
14.2.2.	Aiding the young.	144
14.2.3.	Advantages to other species.	144
14.3.	Possible disadvantages of mixed-species pack feeding.	145
14.4.	Summary.	145
15.	INTRODUCTION TO ENERGETICS.	146
16.	STOCKS OF <u>CHIONE STUTCHBURYI</u> .	149
16.2.	Discussion.	150
16.2.2.	Variation in stock.	151
17.	STOCKS OF <u>COMINELLA</u> SPECIES.	157
17.2.	Discussion.	158
18.	PRODUCTION OF <u>CHIONE STUTCHBURYI</u> .	162
18.1.	General introduction.	162
18.2.	The production of <u>Chione</u> populations.	162
18.3.	Production of flesh in <u>Chione</u> populations.	164
18.3.2.	Discussion.	166
18.4.	Production of gonad in <u>Chione</u> populations.	171
18.4.1.	Introduction	171
18.4.2.	Calculation.	171
18.4.3.	Gonad production with height on the shore.	175
18.4.4.	Gonad production in energy units.	175

18.4.5.	Calculation of gonad production for all populations.	177
18.4.6.	Discussion.	179
18.5.	A method for comparing the production of <u>Chione</u> in different areas.	181
18.5.1.	Introduction.	181
18.5.2.	Calculation of the production of a 'standard' population.	181
18.5.3.	Discussion.	184
19.	PRODUCTION OF <u>COMINELLA</u> POPULATIONS.	186
19.1.	Flesh weight increment.	186
19.1.2.	Discussion.	189
19.2.	Reproductive production of <u>Cominella</u> species.	189
19.2.2.	Reproductive production of field populations.	190
19.2.3.	Discussion.	191
20.	TOTAL ENERGY REQUIREMENTS OF <u>COMINELLA</u> POPULATIONS.	193
20.1.	Introduction.	193
20.2.	Efficiency.	195
20.3.1.	The ecological growth efficiency of <u>Cominella</u> populations: Introduction.	197
20.3.2.	Proceedure.	198
20.3.3.	Discussion.	201
20.4.	Variation in E.G.E. with rate of feeding.	201
20.4.1.	The experiment.	201
20.4.2.	Results.	202
20.5.	Variation in E.G.E. with sex and age.	206
20.5.2.	Experimental proceedure.	206
20.5.3.	Results.	207
20.5.4.	Relative efficiency of 'young' and 'old' individuals.	208

20.6.	General discussion of the ecological growth efficiency of <u>Cominella</u> species.	209
21.	MAINTENANCE ENERGY FOR <u>COMINELLA</u> POPULATIONS.	213
21.2.	Maintenance energy for <u>C. glandiformis</u> , Experiment 1.	214
21.3.	Experiment 2.	215
21.4.	Experiment 3.	215
21.5.	Results.	216
21.6.	Discussion.	218
22.	ASSIMILATION EFFICIENCY OF <u>COMINELLA</u> SPECIES.	220
23.	THE ENERGY BUDGET FOR <u>COMINELLA</u> POPULATIONS.	223
24.	INTERACTION OF <u>CHIONE</u> <u>STUTCHBURYI</u> AND <u>COMINELLA</u> SPECIES.	231
25.	GENERAL DISCUSSION.	233
Appendix 6.1.		235
Appendix 18.1.		236
Appendix 18.2.		236
Appendix 18.3.		238
Appendix 20.		239
BIBLIOGRAPHY.		240

ACKNOWLEDGEMENTS.

I wish firstly to thank my supervisor, Professor J.E. Morton, for his continued interest and help throughout this study.

My thanks also to Dr. W.J. Ballantine, Director, and Dr. F.J. Taylor, Associate Director, of the Marine Laboratory at Leigh, for their interest and practical aid. I am especially grateful to Mr. S.L. Smith, technician at the Marine Laboratory, for his help in constructing apparatus, and looking after experimental populations. My thanks also to Mr. J. Crossley, technician at Leigh, for his help in feeding laboratory populations of Cominella species.

I also wish to thank Dr. E.J. Batham, Director of the Portobello Marine Biological Station, for the use of laboratory facilities, and Professor G.A. Knox, for the use of facilities at the University of Canterbury. My special thanks are due also to Dr. J.B. Jillett at Otago, and Mr. R. Voller at Christchurch, who sent regular samples of Chione stutchburyi to Leigh, enabling me to undertake seasonal studies that would otherwise have been impossible.

I would finally thank Dr. R.B. Pike, Director of the Island Bay Marine Laboratory, and Dr. J.C. Yaldwyn of the Dominion Museum, for providing data and samples of Chione stutchburyi from the Wellington Harbour.