



<http://researchspace.auckland.ac.nz>

ResearchSpace@Auckland

Copyright Statement

The digital copy of this thesis is protected by the Copyright Act 1994 (New Zealand).

This thesis may be consulted by you, provided you comply with the provisions of the Act and the following conditions of use:

- Any use you make of these documents or images must be for research or private study purposes only, and you may not make them available to any other person.
- Authors control the copyright of their thesis. You will recognise the author's right to be identified as the author of this thesis, and due acknowledgement will be made to the author where appropriate.
- You will obtain the author's permission before publishing any material from their thesis.

To request permissions please use the Feedback form on our webpage.

<http://researchspace.auckland.ac.nz/feedback>

General copyright and disclaimer

In addition to the above conditions, authors give their consent for the digital copy of their work to be used subject to the conditions specified on the Library Thesis Consent Form.

AN ELECTROSTATIC PARTICLE ACCELERATOR

A THESIS SUBMITTED FOR THE
DEGREE OF DOCTOR OF PHILOSOPHY
AT THE UNIVERSITY OF AUCKLAND
BY HENRY NAYLOR

NOVEMBER 1968.

I agree to this thesis being consulted, and that after five years, the Librarian for the time being of the University of Auckland may at his discretion have it copied, for library purposes but not for publication.

Signed: *H. Naylor*.....

Date: *14-8-69*.....

NAYLOR, Henry: An electrostatic particle accelerator.
(PhD).

THE UNIVERSITY OF AUCKLAND

LIBRARY THESIS

11882-69

539.73

N33

cop. 2

SCIENCE LIBRARY

Thesis
11882-69

539.73

N33

cop. 2

.... because the whole machine should march
Impelled by those diversely moving parts
Each blind to aught beside its little bent.

.

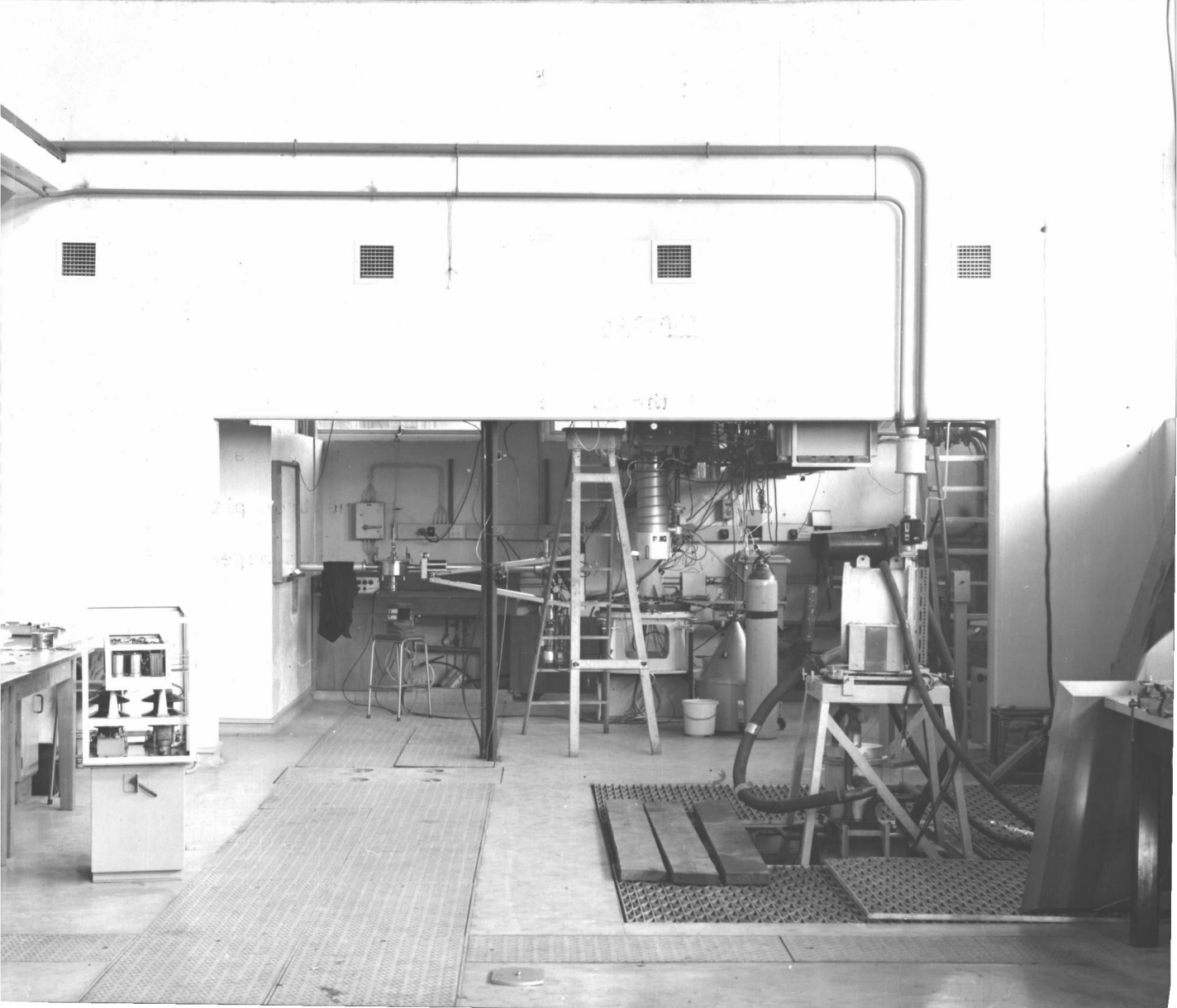
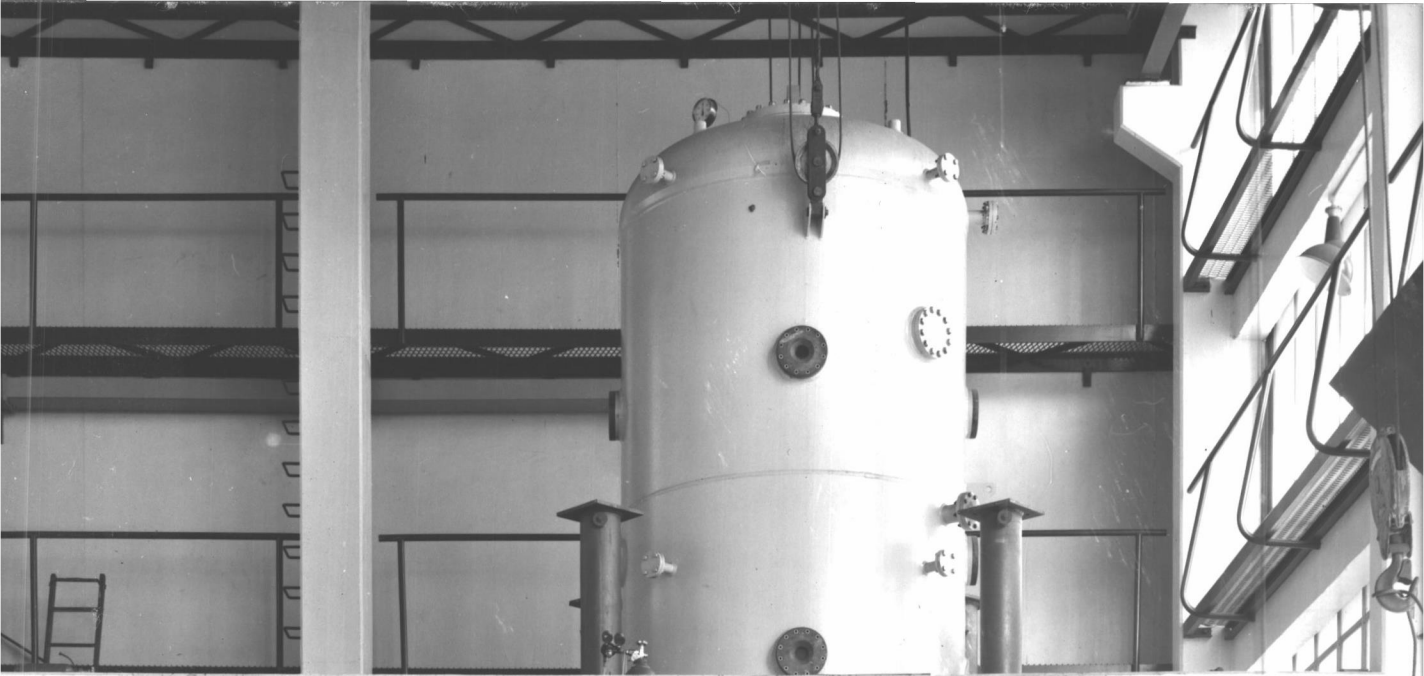
.

As from the welter of their time he drew
Its elements successively to view,
Followed all actions backward on their course,
And catching up, unmingled at the source,
Such a strength,

"Sordello", R. Browning.

PHOTOGRAPH ONE

General view of the accelerator laboratory. The beam line on the left goes through a shielding wall to the mass spectrograph room. In the right foreground, mounted in the neutron pit, is a spin-precession solenoid used in neutron polarisation experiments.



C O N T E N T S

	<u>Page</u>
Introduction	v
<u>CHAPTER 1. HISTORY.</u>	
1.1. Electrostatic Particle Accelerators	1
1.2. Origins of the AURA II High Voltage Generator	2
1.3. Auckland Proposals	3
1.4. Modifications to the N.I.R.N.S. Generator	5
<u>CHAPTER 2. THE SINGLE ENDED TANDEM ACCELERATOR.</u>	
2.1. Tandem Accelerators	6
2.2. Terminal Magnet	7
2.3. Charge Stripping	8
2.4. Conclusion	11
<u>CHAPTER 3. BEAM OPTICS.</u>	
3.1. General Design Considerations	12
3.2. Relevant Optical Theory	13
3.3. Transfer Matrices	17
3.4. Input Beam	24
3.5. Matching the Input Beam to the Terminal Magnet	26
3.6. Positive Ion Beam	33
<u>CHAPTER 4. CHARGE EXCHANGE NEGATIVE ION SOURCE.</u>	
4.1. History	38
4.2. Charge Exchange of Hydrogen Ions in Hydrogen Gas	40
4.3. General Arrangement of the Source	41
4.4. Charge Exchange Canal	42

4.5.	Proton Source	44
4.6.	Focusing the Positive Ion Beam	47
4.7.	Ion Source Analysing Magnet	48
4.8.	Performance	50
<u>CHAPTER 5. ACCELERATION TUBES.</u>		
5.1.	"Long Tube" or "Total Voltage" Effect	53
5.2.	Non Uniform Field Tubes	56
5.3.	Electric Field Design	58
5.4.	Construction	63
<u>CHAPTER 6. LENSES AND MAGNETS.</u>		
6.1.	Matching Lens	65
6.2.	Tube Entrance Lens	67
6.3.	Strong Focusing Lens	68
6.4.	90° Analysing Magnet	70
6.5.	Permanent Magnet Quadrupole Lens	72
6.6.	Orientation of Optical Components	73
<u>CHAPTER 7. PRELIMINARY TESTS.</u>		
7.1.	Generator Voltage Runs	74
7.2.	Tube Testing	76
7.3.	Tests with Beam	76
7.4.	Analysed Proton Beam	80
7.5.	Energy Loss and Energy Spread in Carbon Foils	82
7.6.	Early Energy Measurements	85
<u>CHAPTER 8. ENERGY CALIBRATION.</u>		
8.1.	Introduction	87

8.2.	The Energy Reference	88
8.3.	Calibration Reactions	90
8.4.	Results of Threshold and Resonance Energy Measurements	91
8.5.	Differential Hysterisis	93
8.6.	Beam Position	95
8.7.	Proposed Improvements to the Energy Scale	96
<u>CHAPTER 9.</u>	<u>PERFORMANCE AND FUTURE DEVELOPMENTS</u>	
9.1.	Performance	98
9.2.	Ion Sources	101
9.3.	Target Stations	102
<u>APPENDIX A.</u>	<u>ENGINEERING ASPECTS OF THE ACCELERATOR.</u>	
	Introduction	103
A.1.	Mechanical	103
A.2.	Gas Handling	108
A.3.	Vacuum	110.
A.4.	Electrical	111
A.5.	Controls and Metering	112
<u>APPENDIX B.</u>	<u>TERMINAL MAGNET.</u>	116
<u>APPENDIX C.</u>	<u>RELIABILITY.</u>	119
	References	124