



Libraries and Learning Services

# University of Auckland Research Repository, ResearchSpace

## Version

This is the publisher's version. This version is defined in the NISO recommended practice RP-8-2008 <http://www.niso.org/publications/rp/>

## Suggested Reference

Ronge, T. A., Tiedemann, R., Lamy, F., Köhler, P., Alloway, B. V., De Pol-Holz, R., Pahnke, K., Southon, J., & Wacker, L. (2016). Radiocarbon constraints on the extent and evolution of the South Pacific glacial carbon pool. *Nature Communications*, 7, Article 11487. doi:[10.1038/ncomms11487](https://doi.org/10.1038/ncomms11487)

## Copyright

Items in ResearchSpace are protected by copyright, with all rights reserved, unless otherwise indicated. Previously published items are made available in accordance with the copyright policy of the publisher.

This is an open-access article distributed under the terms of the [Creative Commons Attribution](#) License.

For more information, see [General copyright](#), [Publisher copyright](#), [SHERPA/RoMEO](#).

ARTICLE

Received 25 Mar 2015 | Accepted 1 Apr 2016 | Published 9 May 2016

DOI: 10.1038/ncomms11487

OPEN

# Radiocarbon constraints on the extent and evolution of the South Pacific glacial carbon pool

T.A. Ronge<sup>1</sup>, R. Tiedemann<sup>1</sup>, F. Lamy<sup>1</sup>, P. Köhler<sup>1</sup>, B.V. Alloway<sup>2</sup>, R. De Pol-Holz<sup>3</sup>, K. Pahnke<sup>4</sup>, J. Southon<sup>5</sup>  
& L. Wacker<sup>6</sup>

During the last deglaciation, the opposing patterns of atmospheric CO<sub>2</sub> and radiocarbon activities ( $\Delta^{14}\text{C}$ ) suggest the release of <sup>14</sup>C-depleted CO<sub>2</sub> from old carbon reservoirs. Although evidences point to the deep Pacific as a major reservoir of this <sup>14</sup>C-depleted carbon, its extent and evolution still need to be constrained. Here we use sediment cores retrieved along a South Pacific transect to reconstruct the spatio-temporal evolution of  $\Delta^{14}\text{C}$  over the last 30,000 years. In ~2,500–3,600 m water depth, we find <sup>14</sup>C-depleted deep waters with a maximum glacial offset to atmospheric <sup>14</sup>C ( $\Delta\Delta^{14}\text{C} = -1,000\text{‰}$ ). Using a box model, we test the hypothesis that these low values might have been caused by an interaction of aging and hydrothermal CO<sub>2</sub> influx. We observe a rejuvenation of circumpolar deep waters synchronous and potentially contributing to the initial deglacial rise in atmospheric CO<sub>2</sub>. These findings constrain parts of the glacial carbon pool to the deep South Pacific.

<sup>1</sup> Alfred-Wegener-Institut Helmholtz-Zentrum für Polar- und Meeresforschung, Department for Marine Geology, PO Box 120161, Bremerhaven 27515, Germany. <sup>2</sup> School of Geography, Environment and Earth Sciences, Victoria University of Wellington, PO Box 600, 6012 Wellington, New Zealand. <sup>3</sup> GAIA-Antártica Universidad de Magallanes, Department of Paleoclimatology, Oceanography, Punta Arenas 01855, Chile. <sup>4</sup> Max Planck Research Group—Marine Isotope Geochemistry, Institute for Chemistry and Biology of the Marine Environment, Department of Marine Isotope Geochemistry, Carl von Ossietzky University, PO Box 2503, Oldenburg 26111, Germany. <sup>5</sup> School of Physical Science, Department of Earth Science, University of California, Irvine, California 92697-4675, USA. <sup>6</sup> Laboratory of Ion Beam Physics (HPK), Eidgenössische Technische Hochschule, Schafmattstrasse 20, Zürich 8093, Switzerland. Correspondence and requests for materials should be addressed to T.A.R. (email: Thomas.Ronge@awi.de).

The deep ocean contains the largest carbon reservoir within the global carbon cycle that might interact with the atmosphere on glacial/interglacial timescales. Therefore, the deglacial rise in atmospheric CO<sub>2</sub> by ~90 p.p.m.v. (ref. 1) was probably linked to significant modifications in oceanic circulation that resulted in increasing rates of CO<sub>2</sub> outgassing<sup>2–4</sup>. Thus, in order to sequester large amounts of atmospheric CO<sub>2</sub>, the deep glacial ocean must have been effectively cut off from gas exchange with the atmosphere. Throughout a glacial period, the isolation of deep waters from the surface, and hence the atmosphere, leads to an accumulation of carbon (CO<sub>2</sub>) and nutrients in the deep ocean, which is accompanied by a progressive depletion of radiocarbon (<sup>14</sup>C). Consequently, the older a water mass gets, the more enriched in <sup>14</sup>C-depleted CO<sub>2</sub> it becomes.

So far, only isolated occurrences of old glacial water masses have been identified in the North and South Pacific, as well as in the South Atlantic, which suggests that the storage of CO<sub>2</sub> occurred in the deep glacial ocean<sup>4–8</sup> (Supplementary Fig. 1 and Supplementary Table 1). In particular, the overturning circulation of the Southern Ocean (SO), where nowadays ~65% of all deep waters make first contact with the atmosphere<sup>9</sup>, controls the ventilation of the oceans interior. However, the surface residence time of upwelled waters before re-subduction is an important factor controlling the efficiency of air–sea gas exchange. Changes in the climate system of the SO, such as the intensification or weakening of stratification or westerly winds have the potential to significantly alter the oceanic uptake or release of CO<sub>2</sub> (refs 2, 3 and 10) and likewise the radiocarbon budget of deep waters. Therefore, the circum-Antarctic upwelling region is considered the most likely deglacial pathway of stored old carbon from the abyss to the atmosphere. In this oceanic window, carbon-rich deep waters like Pacific Deep Water (PDW) are mixed and upwelled and provide a major source for Antarctic Intermediate Water (AAIW), formed close to the Subantarctic Front (SAF)<sup>11</sup>. Hence, AAIW is able to propagate the circulation- and outgassing signals into the major ocean basins. In this context, numerous intermediate-water records have been analysed to track the timing and pathways of SO deep water upwelling<sup>12–16</sup>. The spatial and temporal dimension of the glacial reservoir itself as well as the pathway, magnitude and process of the deglacial CO<sub>2</sub> release remain elusive, although evidence for carbon storage in the deep glacial southwest Pacific is increasing<sup>5,6</sup>.

Here, to better constrain the glacial carbon pool, its vertical extent and evolution, we use  $\Delta^{14}\text{C}$ -records from six sediment cores at the New Zealand Margin (NZM; Fig. 1a and Supplementary Fig. 2), covering the major South Pacific water masses AAIW and Upper Circumpolar Deep Water/Lower Circumpolar Deep Water between ~830 and ~4,300 m water depth (Fig. 1b). To assess the lateral extent of the glacial carbon pool, we have additionally analysed an open-ocean sediment core from the East Pacific Rise (EPR; PS75/059-2; 3,613 m) located more than 4,000 km east of the NZM (Fig. 1a). Our NZM depth transect is well suited for the analysis of SO water mass ventilation as we can record <sup>14</sup>C-depleted deep waters on their way to the upwelling region further south, as well as recently subducted intermediate waters moving towards the north (Fig. 1b).

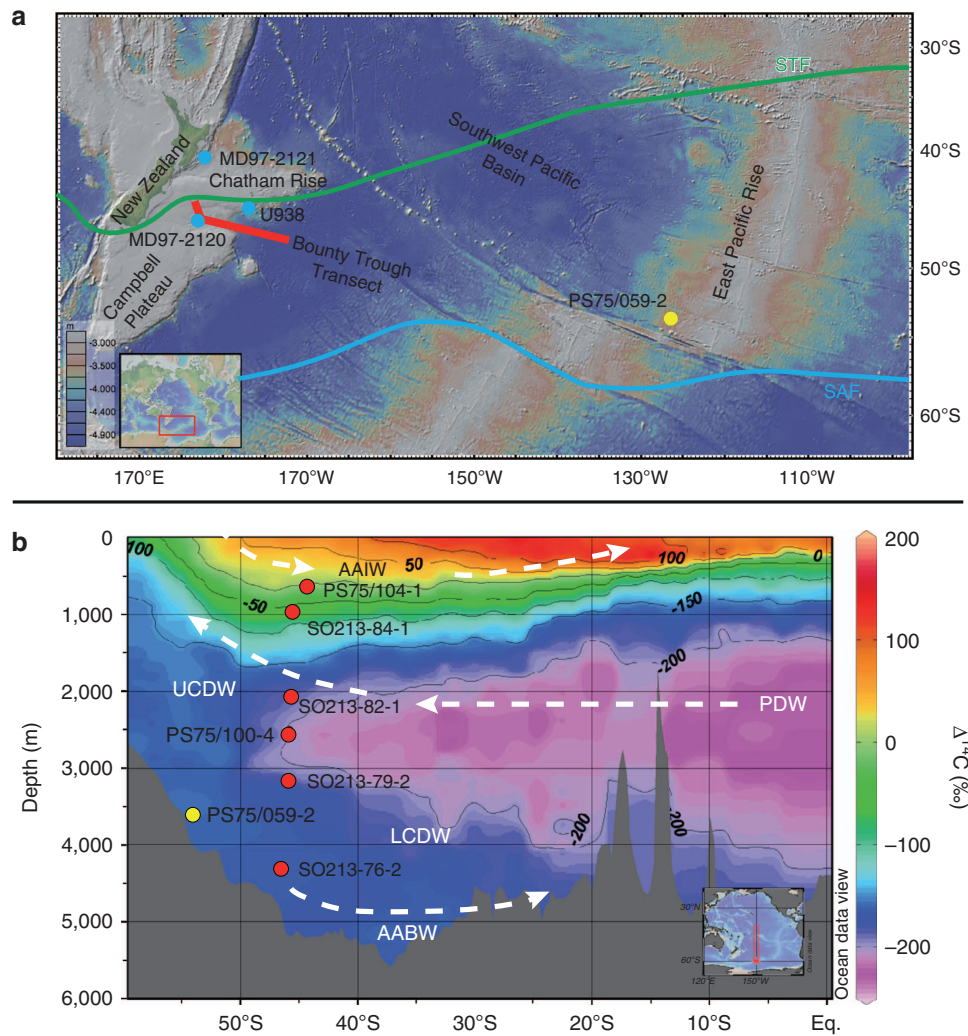
We show that throughout the water column, a wide range of radiocarbon activities ( $\Delta^{14}\text{C}$ ) indicates a highly stratified South Pacific during the last glacial. This stratification implicates pronounced sequestration of CO<sub>2</sub> in circumpolar deep waters below a water depth of ~2,000 m. Building on the hypothesis of increased glacial outgassing of volcanic CO<sub>2</sub> along mid-ocean ridges (MORs)<sup>17–19</sup>, we use a simple box model to highlight that

the most extreme <sup>14</sup>C-depletion between ~2,500 and ~3,600 m water depth might be explained by a combination of aged <sup>14</sup>C-depleted waters and the additional admixture of <sup>14</sup>C-dead hydrothermal CO<sub>2</sub>. At the end of the glacial period, our deep water  $\Delta^{14}\text{C}$ -values increase throughout the water column in unison to rising atmospheric CO<sub>2</sub>-values<sup>1</sup>. On the basis of these patterns, we conclude that the deep South Pacific was an important contributor to the deglacial rise in atmospheric CO<sub>2</sub>.

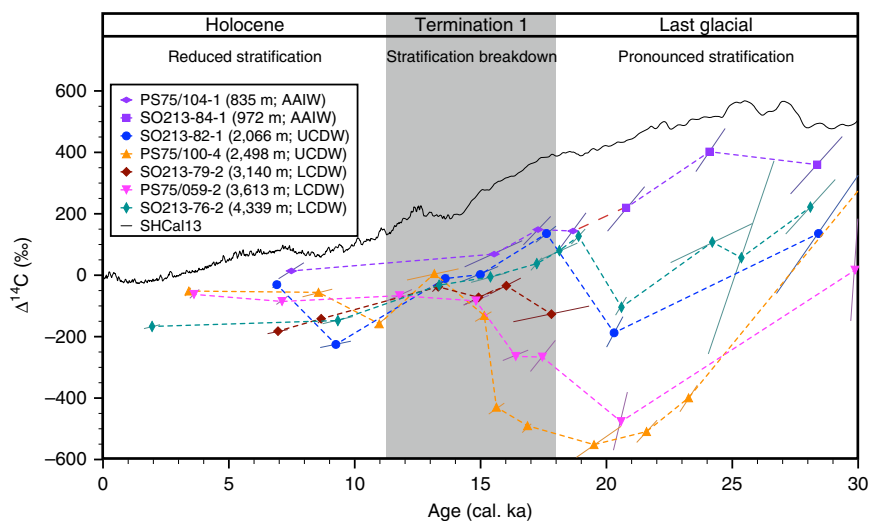
## Results

**Radiocarbon.** To assess both glacial and deglacial ventilation changes, we used paired samples of *Globigerina bulloides* and mixed benthic foraminifers from seven new sediment cores, located south of the present Subtropical Front (STF) (Fig. 1a). The core locations have sedimentation rates between 2.5 cm per kyr and 22 cm per kyr (Supplementary Table 2). Before the Last Glacial Maximum (LGM), ~29 cal. ka, all deep-water masses (below ~2,000 m) show  $\Delta^{14}\text{C}$ -values ranging from +200‰ to –100‰ (Fig. 2). At the same time, AAIW  $\Delta^{14}\text{C}$  is clearly elevated with values of ~360‰. The most obvious feature of our reconstructed  $\Delta^{14}\text{C}$ -values over the LGM is the large glacial range of  $\Delta^{14}\text{C}$  between ~830 and ~4,300 m (400‰ to –550‰; Fig. 2). About 21 cal. ka, deep-water  $\Delta^{14}\text{C}$  at 4,300 and 2,066 m increases, followed by increasing radiocarbon values at 2,500 m at the onset of the last deglaciation. Parallel to increasing deep-water radiocarbon concentrations, AAIW- $\Delta^{14}\text{C}$  slightly decreases. At ~14.7 cal. ka, the  $\Delta^{14}\text{C}$ -records of all water depths converge and continue to evolve parallel to each other throughout the deglaciation and into the Holocene (Fig. 2). In the discussion, we used  $\Delta\Delta^{14}\text{C}$ -records for our interpretations. These records represent the  $\Delta^{14}\text{C}$  offset of our data to the  $\Delta^{14}\text{C}$ -value of the past atmosphere<sup>20</sup>. We also calculated the  $\Delta\Delta^{14}\text{C}_{\text{adj}}$  according to Cook and Keigwin<sup>21</sup> (Supplementary Fig. 3). This method corrects the initial  $\Delta^{14}\text{C}$  values to the modern, pre-industrial <sup>14</sup>C profile (ref. 21). As the trend in our data remains the same, regardless of the method used, we use  $\Delta\Delta^{14}\text{C}$  for our discussion, in order to improve the comparability to other studies.

**Box modelling.** We used a 1-box model to investigate the hypothesis that hydrothermal CO<sub>2</sub>-fluxes might have contributed to our reconstructed maximum depletion in  $\Delta^{14}\text{C}$  in the glacial deep ocean (Methods). We simulated the single effect of hydrothermal CO<sub>2</sub> inflow on oceanic  $\Delta^{14}\text{C}$ , as well as two sensitivity runs in which hydrothermal CO<sub>2</sub> inflow is combined with either carbonate compensation, leading to sediment dissolution<sup>22</sup> or with CO<sub>2</sub> sequestration, potentially connected with deep-ocean volcanism<sup>23</sup>. Our model simulates for the single effect of different CO<sub>2</sub> flux rates *F* (in  $\mu\text{mol per kg per year}$ ; Supplementary Fig. 4) a drop in  $\Delta^{14}\text{C}$  by –240‰ (*F* = 0.3), –380‰ (*F* = 0.6), –480‰ (*F* = 0.9) and –550‰ (*F* = 1.2). Only if the response of the marine carbonate system to this CO<sub>2</sub> flux (by carbonate compensation and the dissolution of sediments) is considered<sup>22</sup> (Supplementary Fig. 4), we calculate  $\Delta^{14}\text{C}$  amplitudes in agreement with our maximally depleted data (approximately –500‰ to –600‰) for a hydrothermal flux of 0.6  $\mu\text{mol kg per year}$  or larger. However, as hot rocks interact with seawater, MOR volcanism is also discussed as a potential CO<sub>2</sub> sink<sup>23</sup>. If we implement this process of similar size of the hydrothermal CO<sub>2</sub> flux (no net oceanic carbon change and therefore no carbonate compensation) we need a hydrothermal CO<sub>2</sub> flux *F* of 1.2  $\mu\text{mol kg per year}$  to meet the maximum  $\Delta^{14}\text{C}$  depletion of ~–500‰, as observed in our data (Fig. 3a). To convert the CO<sub>2</sub> fluxes to gross carbon fluxes (PgC per year) we estimated the minimum area covered by our sediment cores as a ~1,000-m-thick water mass (2,500–3,600 m as covered

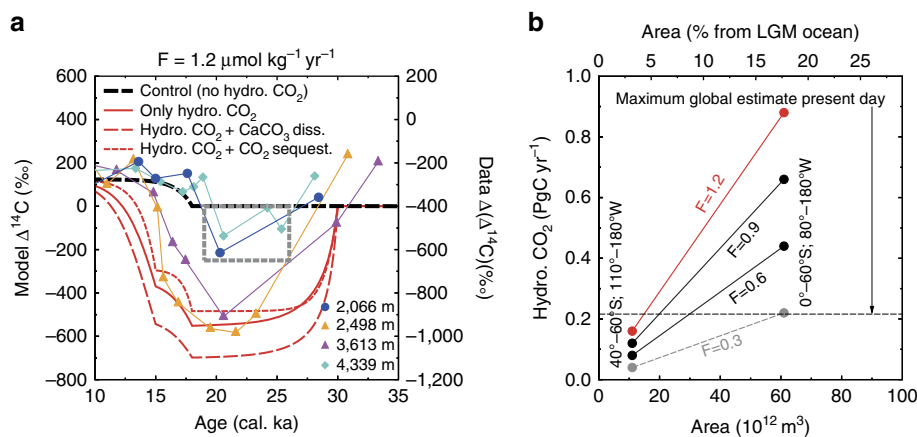


**Figure 1 | Overview of the NZM showing core locations and water masses. (a)** Map of the Southwest Pacific. The red bar represents the lateral area covered by our sediment core transect at the NZM. Yellow circle—position of our sediment core from the EPR. Blue circles—previous studies. U938 (ref. 5), MD97-2120 (ref. 15), MD97-2121 (ref. 6). Green line—Subtropical Front. Blue line—Subantarctic Front<sup>66</sup>. Map created using GeoMapApp. **(b)** Water mass section of modern South Pacific  $\Delta^{14}\text{C}$ -concentrations. Sediment cores (red and yellow dots) projected into WOCE line P16 (ref. 67). AABW, Antarctic Bottom Water; WOCE, World Ocean Circulation Experiment. Section generated using ODV 4.7.2 (ref. 68).



**Figure 2 |  $\Delta^{14}\text{C}$  changes of the major South Pacific water masses.** The large glacial range in  $\Delta^{14}\text{C}$  indicates a pronounced water mass stratification, followed by a progressive stratification breakdown during Termination 1 (grey shaded area). The broken red line indicates the area, where we spliced PS75/104-1 and SO213-84-1.





**Figure 3 | Simulation results of a 1-box model for the effect of hydrothermal  $\text{CO}_2$ -outgassing on oceanic  $\Delta^{14}\text{C}$ .** (a) Comparison of model-based  $\Delta^{14}\text{C}$  with data-based  $\Delta^{14}\text{C}$ . SO213-82-1 (2,066 m; blue line); PS75/100-2 (2,498 m; orange line); PS75/059-2 (3,613 m; pink line); and SO213-76-2 (4,339 m; green line). The impact of our best-guess hydrothermal  $\text{CO}_2$  flux (F) of  $1.2 \mu\text{mol kg}^{-1} \text{ yr}^{-1}$  between 30 and 15 cal. ka (red solid line) is compared with a control run (black broken line). In the control run, we only decreased the turnover time at 18 cal. ka according to Skinner *et al.*<sup>6</sup> from 2,700 to 1,500 years. In two sensitivity runs, we estimated the influence of  $\text{CaCO}_3$  dissolution or  $\text{CO}_2$  sequestration (red broken lines). The grey box indicates the  $\Delta^{14}\text{C}$ -area covered by previous Southern Ocean studies<sup>4,6,8</sup>. (b) Upscaling of our localized results for different hydrothermal  $\text{CO}_2$  fluxes (F) to regional carbon fluxes as a function of area. Present day maximum global estimate of hydrothermal  $\text{CO}_2$  fluxes ( $0.22 \text{ PgC yr}^{-1}$ ) (ref. 24) indicated by the black broken line.

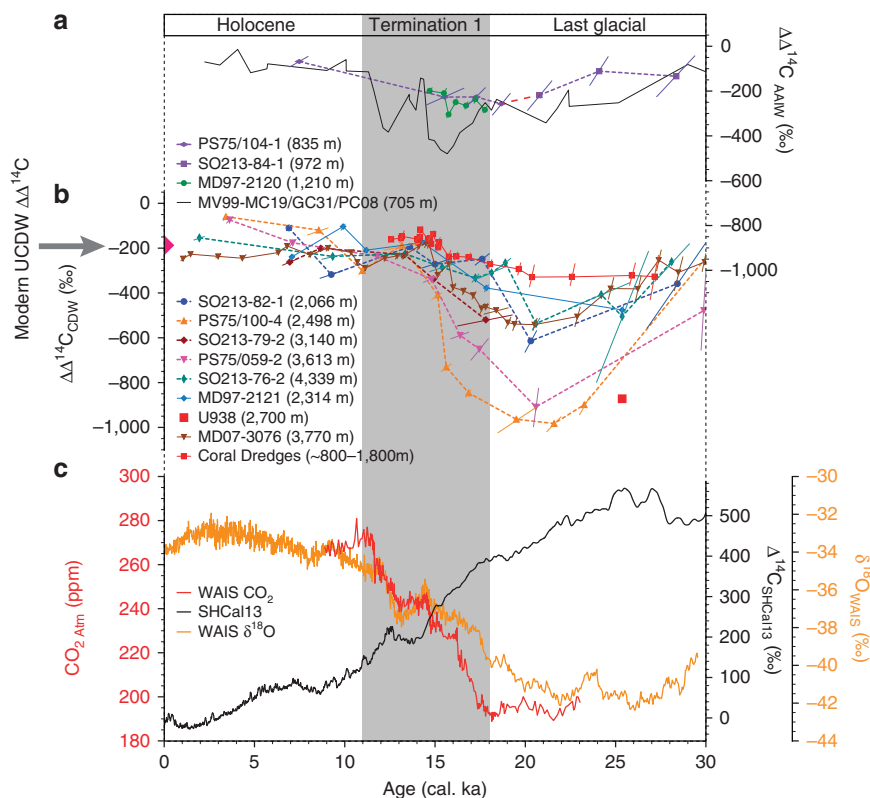
by PS75/100-4 and PS75/059-2) ranging from  $40^\circ\text{S}$  to  $60^\circ\text{S}$  and  $110^\circ\text{W}$  to  $180^\circ\text{W}$ . The fluxes necessary to influence such a water mass would lead to a hydrothermal injection of  $\text{CO}_2$  of  $0.08$ – $0.16 \text{ PgC}$  per year (modern global flux is estimated to up to  $\sim 0.22 \text{ PgC}$  per year)<sup>24</sup>. Upscaling to a larger water mass, spanning most of the South Pacific ( $1,000 \text{ m}$ ;  $0^\circ$ – $60^\circ\text{S}$ ;  $80^\circ$ – $180^\circ\text{W}$ ) would imply that the hydrothermal  $\text{CO}_2$  flux might be as large as  $0.44$ – $0.88 \text{ PgC}$  per year (Fig. 3b).

## Discussion

Throughout the water column, the observed glacial  $\Delta^{14}\text{C}$ -range in our cores exceeds the modern and Holocene values by a factor of  $\sim 5$  and indicates strong age differences and therefore enhanced stratification of the intermediate and deep glacial South Pacific. Along its pathway in the global thermohaline circulation PDW is fed into circumpolar waters and constitutes today's oldest water mass. The  $^{14}\text{C}$ -depleted PDW presently extends to  $2,000$ – $2,500 \text{ m}$  north of the Chatham Rise close to New Zealand<sup>25</sup> (Fig. 1b). From our transect, we are able to show that during the LGM, significantly  $^{14}\text{C}$ -depleted and aged water masses occupied depths between  $\sim 2,000$  and  $\sim 4,300 \text{ m}$  in the Southern Westerly (SW) Pacific (Fig. 2). Our data locate the core of the  $^{14}\text{C}$ -depleted water mass at the NZM in a of  $\sim 2,500 \text{ m}$  (PS75/100-4; modern depth of Upper Circumpolar Deep Water; Fig. 4), yielding a maximum deep water to atmosphere offset in radiocarbon activities ( $\Delta^{14}\text{C}$ ) of approximately  $-1,000\text{‰}$ . Analysing  $\Delta^{14}\text{C}$  corrects for any impacts of changes in  $^{14}\text{C}$  production<sup>26</sup> as well as for variable ocean–atmosphere exchange rates. A corresponding apparent ventilation age, based on benthic minus reservoir-corrected planktic  $^{14}\text{C}$  ages would equate to  $\sim 8,000$  years (Supplementary Fig. 3d). A similar glacial  $\Delta^{14}\text{C}$  depletion of about  $-870\text{‰}$  was reported from sediment core U938, which was recovered at the NZM in a water depth of  $2,700 \text{ m}$  (ref. 5) (Figs 1a and 4). We hypothesize that these extremely low  $\Delta^{14}\text{C}$ -values might be the result of the admixture of  $^{14}\text{C}$ -dead hydrothermal  $\text{CO}_2$  into a water mass with an initial high ventilation age, which was estimated to at least  $2,700$  years<sup>6</sup>. The upper and lower boundary of this old water mass are marked by higher  $\Delta^{14}\text{C}$ -values of  $-550\text{‰}$  to  $-600\text{‰}$  indicating a highly stratified water column (Fig. 4b). Similar  $\Delta^{14}\text{C}$ -values were

reported at the NZM north of Chatham Rise at  $2,314 \text{ m}$  (ref. 6). This confines the most radiocarbon-depleted waters to a depth below  $\sim 2,300 \text{ m}$ . The observed trend of  $^{14}\text{C}$  between  $830$  and  $4,300 \text{ m}$  parallels the highest glacial nutrient concentrations off New Zealand, between  $2,000$  and  $3,000 \text{ m}$  (ref. 27) (Fig. 5), likewise indicative for the presence of aged, nutrient rich (low  $\delta^{13}\text{C}$ ) and radiocarbon-depleted waters. Yet, the  $\delta^{13}\text{C}$  reconstructions might yield a certain bias, as endobenthic (*Uvigerina*) instead epibenthic (*Cibicidoides*) foraminifera were used<sup>27</sup>.

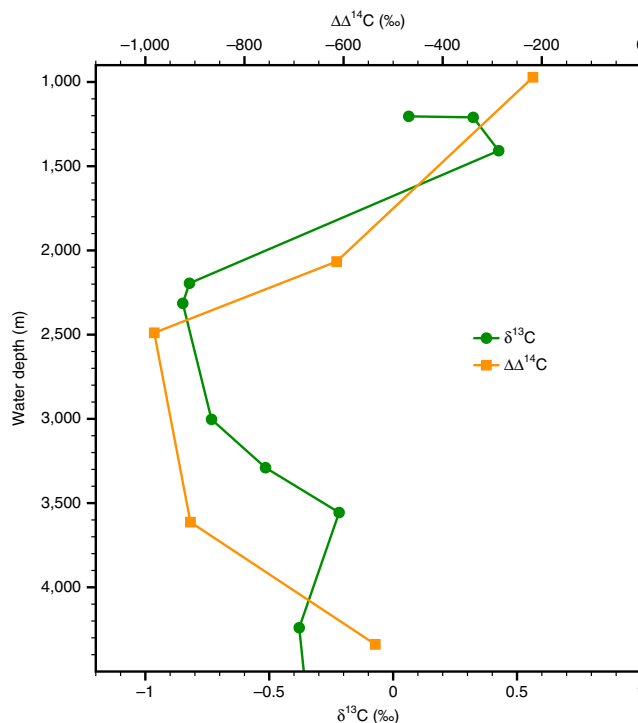
We traced the  $^{14}\text{C}$ -depleted glacial carbon reservoir off New Zealand to the central South Pacific (EPR)  $4,000 \text{ km}$  east of the NZM. At this location,  $\Delta^{14}\text{C}$ -values are as negative as  $-900\text{‰}$  at  $3,600 \text{ m}$  (PS75/059-2; Figs 1a and 4). Hence, we are confident that this water mass was not only restricted to the NZM but seems to have occupied large parts of the South Pacific. Further off, in the Drake Passage and the South Atlantic, glacial water masses have been identified in CDWs with  $\Delta^{14}\text{C}$ -values as low as  $-330\text{‰}$  (ref. 8) and  $-540\text{‰}$  (ref. 6), respectively (Fig. 4). In their timing and amplitudes, these records are similar to our Pacific radiocarbon signature characterizing the upper and lower boundary of the old carbon pool (Fig. 4b). Our intermediate-water record (SO213-84-1; modern depth of AAIW) shows the highest glacial  $\Delta^{14}\text{C}$ -values of our transect (approximately  $-90\text{‰}$ ). We suggest that the  $^{14}\text{C}$ -depleted deep waters represent the very old return flow from the North Pacific (PDW), similar to the modern circulation pattern (Fig. 1b). The distribution of radiocarbon in our reconstruction might indicate a floating carbon pool instead of a stagnant bottom layer. Several records from the North Pacific might corroborate this assumption. In the Gulf of Alaska<sup>28</sup> (MD02-2489) and off Kamchatka<sup>29</sup> (MD01-2416), as well, the glacial mid-depth water mass (Kamchatka) shows a considerable higher benthic to planktic  $^{14}\text{C}$  offset than the deeper water mass off Alaska. Additional data from the northwest Pacific suggest the lowest glacial  $^{14}\text{C}$  values in a water depth of  $\sim 2,300 \text{ m}$  with better ventilated waters above and below<sup>21</sup>. In the Atlantic Ocean as well, Ferrari *et al.*<sup>30</sup> and Burke *et al.*<sup>31</sup> observed a mid-depth (floating) radiocarbon anomaly. A floating carbon pool might furthermore explain why no sign of old carbon was found in the deep equatorial Pacific below  $4,000 \text{ m}$  (ref. 32). Therefore, this record might have ‘missed’ the old, mid-depth carbon pool above.



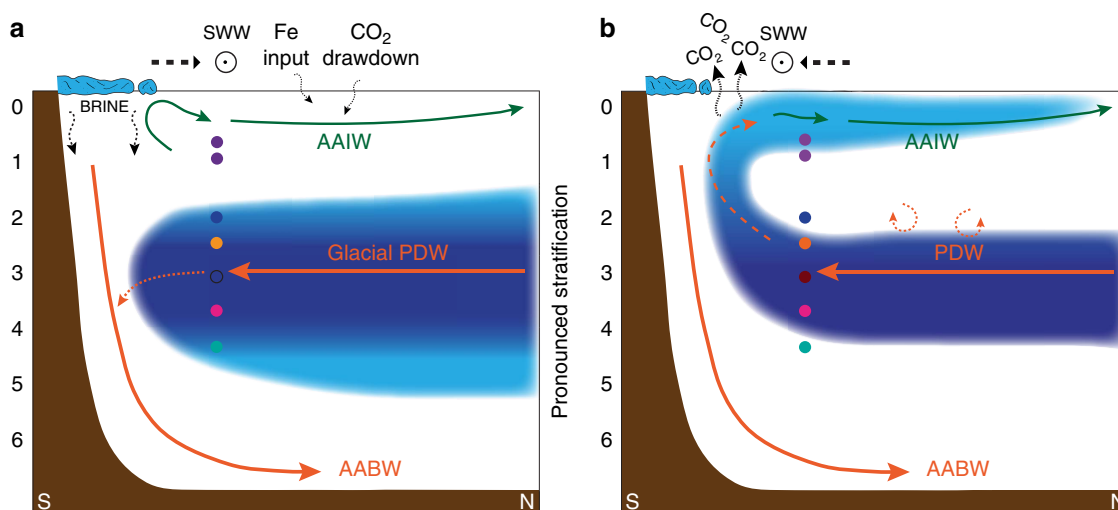
**Figure 4 | Comparison of oceanic and atmospheric proxy records.**  $\Delta^{14}\text{C}$ -values (ocean–atmosphere) of (a) the intermediate Pacific region; PS75/104-1 and SO213-84-1 (this study); MD97-2120 (ref. 15) (green line: Bounty Trough); MV99-MC19/GC31/PC08 (ref. 12) (black line: Northeast Pacific); (b) CDW  $\Delta^{14}\text{C}$ ; PS75 and SO213 records (this study); MD97-2121 (ref. 6) (light blue line: north of Chatham Rise); U938<sup>5</sup> (red square: Bounty Trough); Coral dredges<sup>8</sup> (red line: Drake Passage); MDO7-3076 (ref. 4) (brown line: South Atlantic); and Modern SW-Pacific UCDW  $\Delta^{14}\text{C}$  (ref. 67) (pink triangle). (c) Atmospheric  $\text{CO}_2$  concentrations<sup>1</sup> (red line); WAIS  $\delta^{18}\text{O}$  record<sup>69</sup> (orange line) and atmospheric  $\Delta^{14}\text{C}$ -values<sup>20</sup> (black line). UCDW, Upper Circumpolar Deep Water.

Any explanation for the pronounced glacial radiocarbon-depletion of the deep SO has to involve a limited ocean–atmosphere exchange due to strengthened ocean stratification under glacial boundary conditions<sup>3</sup> (Fig. 6a). Northward-expanded Antarctic sea ice and SW Winds<sup>33</sup> contributed to reduced air–sea gas exchange and upwelling of deep-waters<sup>30</sup>. Surface freshening by melting sea-ice in the source regions of intermediate waters<sup>34</sup> and enhanced formation of highly saline Antarctic Bottom Water<sup>35</sup> may have set a density structure that led to reduced mixing and the encasement of old PDW (Fig. 6a). In addition, the shoaling of North Atlantic Deep Water<sup>30</sup> might have reduced the contribution of freshly ventilated waters into South Pacific CDW below  $\sim 2,000$  m. These interacting key processes may have significantly contributed to the low radiocarbon values and are consistent with an enhanced glacial storage of carbon in the deep ocean.

Old water masses of 5,000–8,000 years are expected to be strongly oxygen depleted<sup>36</sup>. According to Sarinthein *et al.*<sup>7</sup>, water masses with  $\Delta^{14}\text{C}$  values lower than  $-350$ ‰ would be completely anoxic. However, pronounced anoxia have not been documented in the deep South Pacific between 2,500 and 3,600 m. Therefore, an admixture of  $^{14}\text{C}$ -dead carbon via submarine tectonic activity along MOR<sup>18</sup> into an old water mass in the deep South Pacific might have contributed to the extremely low radiocarbon values of the water mass at  $\sim 2,500$ –3,600 m. During the LGM, sea floor eruption rates along tectonically active plate boundaries may have intensified due to the lower glacial sea level<sup>17–19</sup>. This process might have released significant amounts of  $^{14}\text{C}$ -dead  $\text{CO}_2$  into the water column. Using a simple 1-box model (Methods), we tested our hypothesis and calculated if



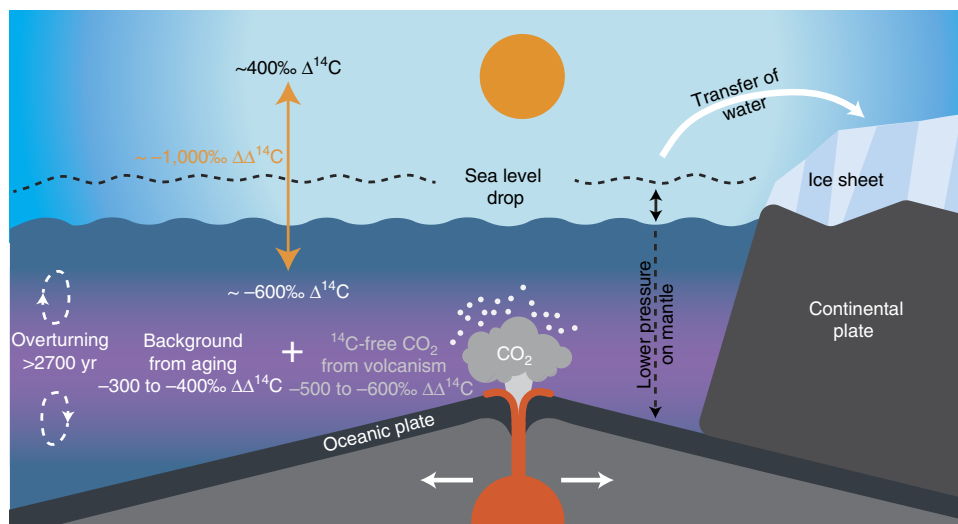
**Figure 5 | Vertical distribution of carbon isotopes off New Zealand throughout the LGM.** Orange line— $\Delta^{14}\text{C}$  (this study). Green line  $\delta^{13}\text{C}_{\text{Uvigerina}}$ <sup>27</sup>.



**Figure 6 | Schematic representation of South Pacific overturning circulation.** (a) Glacial pattern: northernmost extent of sea ice and SWW. Increased AABW-salinity by brine rejection favours stratification. Increased dust input promotes primary production and drawdown of CO<sub>2</sub>. (b) Deglacial pattern: upwelling induced by southward shift of Antarctic sea ice and SWW. The erosion of the deep-water carbon pool releases <sup>14</sup>C-depleted CO<sub>2</sub> towards the atmosphere. Following air-sea gas exchange, the outgassing signal is incorporated into newly formed AAIW (light blue shading). Blue shading: poorly ventilated old and CO<sub>2</sub>-rich waters; Darkest shading 2,500–3,600 m: water level influenced by hydrothermal CO<sub>2</sub>. Green arrows: intermediate water; orange arrows: deep-water; light-blue areas: sea ice; SWW: Southern Westerly Winds; coloured circles: sediment cores (colour coding according to Fig. 2); black circle: SO213-79-2—no glacial data; and circular arrows: diffusional and diapycnal mixing.

the injection of hydrothermal CO<sub>2</sub> into the deep Pacific has the potential to amplify the  $\Delta\Delta^{14}\text{C}$  minimum throughout the LGM (Fig. 3). To overcome the influence of the variable atmospheric <sup>14</sup>C-levels<sup>26,37</sup>, we compared our simulated <sup>14</sup>C to our reconstructed  $\Delta\Delta^{14}\text{C}$  values (deep ocean-to-atmosphere offset). The probably time-delayed response of submarine volcanism to changes in sea level complicate our flux calculations<sup>19</sup>. A crucial prerequisite for our hypothesis of the admixture of hydrothermal CO<sub>2</sub> is the presence of an already aged water mass with high nutrient concentrations and low  $\Delta^{14}\text{C}$  levels (Fig. 7). According to the record of MD97-2121 (ref. 6) (2,314 m), the glacial ventilation age off New Zealand is at least 2,700 years. However, radiocarbon values might have been even lower as the MD97-2121 record lacks any data points between  $\sim 25$  kyr and  $\sim 18$  cal. ka (Fig. 4b). Our  $\Delta\Delta^{14}\text{C}$  record of SO213-82-1 (2,066 m; Fig. 4b) is  $-600\text{‰}$  at  $\sim 20$  kyr,  $\sim 100\text{‰}$  lower than the minimum observed in MD97-2121  $\sim 25$  cal. ka, potentially indicating even higher turnover times. When we combine the radioactive decay, caused by an estimated water mass age of 2,700 years for the time of 35–18 cal. ka, with submarine <sup>14</sup>C-free volcanic CO<sub>2</sub> influx, our model calculates a decrease in  $\Delta^{14}\text{C}$  for the corresponding water mass by additional  $-500\text{‰}$  to  $-600\text{‰}$  (Fig. 3a). This hydrothermal CO<sub>2</sub> outgassing (potentially accompanied by carbonate compensation and/or CO<sub>2</sub> sequestration) would lead to a maximum atmosphere-to-deep ocean offset of  $-800\text{‰}$  to  $-1,000\text{‰}$   $\Delta\Delta^{14}\text{C}$  (Supplementary Fig. 4e–g), comparable to the maximum depletion observed in PS75/059-2 and PS75/100-4. Today, in a water depth between  $\sim 2,500$  and  $\sim 3,500$  m, pronounced volcanic outgassing occurs along the southern EPR<sup>38,39</sup>. The resulting hydrothermal plume spreads towards the west and can be traced by the <sup>3</sup>He-signal in the broader western Pacific (Fig. 8)<sup>40</sup> and off northern New Zealand, right in the water depth under debate of  $\sim 2,500$  m (ref. 41). Therefore, we argue that increased glacial outgassing of <sup>14</sup>C-dead volcanic CO<sub>2</sub> into a stratified ocean has the potential to significantly lower the  $\Delta^{14}\text{C}$ -content of an old (at least 2,700 years) water mass. The prominent Chatham Rise (Fig. 1a) might have acted as a physical barrier, blocking MD97-2121 (ref. 6)

( $\sim 2,300$  m) from the volcanic plume. As MD97-2121 lacks data for most of the last glacial ( $\sim 18$ – $25$  cal. ka), we cannot fully exclude that this core might have been affected by volcanic CO<sub>2</sub> to some extent. Nevertheless, the <sup>14</sup>C-data of MD97-2121 are already significantly higher at  $\sim 18$  cal. ka compared to the values of PS75/100-4. Therefore, we argue that the influence (if any) of hydrothermal activity must have been lower to the north of the Chatham Rise and/or at 2,300 m water depth. Despite the in detail unknown processes accompanying such a hydrothermal carbon flux, its admixture might add additional carbon to the ocean-atmosphere-biosphere system (0.08–0.16 PgC per year; Fig. 3b). However, the net carbon injection depends in detail on the strength of the additional processes carbonate compensation and CO<sub>2</sub> sequestration and might also be zero. Once the glacial processes, favouring stratification, are reversed, any net injected carbon might eventually be released to the atmosphere along with the carbon already stored within the deep ocean (Fig. 5b). A further quantification of the net carbon injection and its contribution to atmospheric CO<sub>2</sub> is not yet possible, since future investigations with process-based models are necessary. Furthermore, as the distribution of MOR is inhomogeneous in the world ocean, it is difficult to compare our local results to global CO<sub>2</sub> flux estimates<sup>24</sup>. In Fig. 3b, we illustrate that the water mass affected by hydrothermal CO<sub>2</sub> might span an area of between 3 and 17% of the global glacial ocean. While the results for the minimum area, covered by our sediment cores, are below the maximum estimate of present day global estimate of hydrothermal outgassing, the results for an area representative for most of the South Pacific are a factor of 2–4 times higher (Fig. 3b). This suggests that if the admixture of hydrothermal CO<sub>2</sub> is the process that can explain the minimum  $\Delta\Delta^{14}\text{C}$  values recorded in the mid-depth South Pacific (PS75/100-4; PS75/059-2; U938 (ref. 5)) the global CO<sub>2</sub>-fluxes from MOR throughout the LGM might have been much larger than today. However, if the initial water mass was older than the 2,700 years assumed in our model, the resulting fluxes might also have been smaller than stated here. Although mantle-CO<sub>2</sub> is depleted in both,  $\Delta^{14}\text{C}$  and also in  $\delta^{13}\text{C}$  ( $-5 \pm 3\text{‰}$  (refs 42 and 43)), its



**Figure 7 | Processes linking the glacial release of hydrothermal  $\text{CO}_2$  and water mass  $\Delta^{14}\text{C}$ .** The drop in global sea level triggers increased volcanic activity at MORs. The plume of  $^{14}\text{C}$ -dead hydrothermal  $\text{CO}_2$  is mixed into an aged water mass, in which the combined effects of surface reservoir age and deep-ocean turnover time, of  $\sim 2,700$  years, led already to a background ocean-to-atmosphere offset in  $\Delta^{14}\text{C}$  of  $-300\text{‰}$  to  $-400\text{‰}$ . This admixture of hydrothermal  $\text{CO}_2$  further lowers the water masses  $\Delta^{14}\text{C}$  by another  $-500\text{‰}$  to  $-600\text{‰}$ , yielding a total  $\Delta^{14}\text{C}$  of about  $-1,000\text{‰}$  (purple layer). Modified after Hand<sup>70</sup>. Reprinted with permission from AAAS.

influence might be stronger on radiocarbon. As  $^{14}\text{C}$  is by far less common in the ocean than  $^{13}\text{C}$ , it can be diluted (lowered) more easily than its non-radiogenic counterpart.

We assume that the previously outlined glacial/interglacial changes in the SO climate system (position of sea ice and westerlies; changes in water mass densities; changes in upwelling and circulation) are the major factors influencing the spatio-temporal evolution of the oceanic carbon pool. However, the extreme minima in  $\Delta^{14}\text{C}$  between 2,500 and 3,600 m water depth in the South Pacific are most plausibly explained by the hypothesized admixture of hydrothermal  $\text{CO}_2$  into an old and already  $^{14}\text{C}$ -depleted water mass. Admittedly, this process would complicate the use of  $^{14}\text{C}$  as a ventilation proxy for the water masses affected by hydrothermal  $\text{CO}_2$ . However, as the presence of an already existing  $^{14}\text{C}$ -depleted glacial water mass is a crucial prerequisite for our model, our theory does not interfere with the concept of stratification, decreased ventilation and the presence of a glacial oceanic carbon pool.

In the Pacific, other processes affect the radiocarbon inventory of water masses as well. Stott and Timmermann<sup>44</sup> already suggested the release of  $^{14}\text{C}$ -depleted carbon from gas clathrates. As the stability of such clathrates is located in shallow waters  $\sim 400$  m (ref. 44), this process is not applicable for our mid-depth anomaly below  $\sim 2,500$  m. Therefore, we reject the possibility of any large influence of  $^{14}\text{C}$ -depleted  $\text{CO}_2$  and  $\text{CH}_4$  clathrates.

At the end of the LGM and during the transition into the Holocene ( $\sim 20$ – $11.5$  cal. ka), converging  $\Delta^{14}\text{C}$ -values argue for a progressive destratification (Fig. 4). During this interval, the deep-water-to-atmosphere offset in radiocarbon between  $\sim 2,000$  and  $\sim 4,300$  m decreases significantly (Fig. 4b). Although the resolution of our deep-water sediment cores is rather low, their  $\Delta^{14}\text{C}$ -values increase within error synchronous to the rise in atmospheric  $\text{CO}_2$  rise (Fig. 4).

During Termination 1, when the most radiocarbon-depleted deep waters rejuvenate, no pronounced depletion in AAIW  $\Delta^{14}\text{C}$  is recorded (Fig. 4a). However, the intermediate-water  $\Delta^{14}\text{C}$ -values remain low from  $\sim 18$ – $15$  cal. ka. The decrease in the deep water-to-atmosphere  $\Delta^{14}\text{C}$ -offset and the abrupt drop in  $\delta^{13}\text{C}$  of atmospheric  $\text{CO}_2$  (ref. 45) suggests increased air–sea gas exchange and the oceanic release of upwelled old  $\text{CO}_2$

(Fig. 5b). The intermediate-waters from the NZM (this study) and the Chile Margin<sup>14</sup> significantly deviate from the (sub)tropical East Pacific, which shows two prominent drops in  $\Delta^{14}\text{C}$  at the intermediate-water level during Termination 1 (refs 12, 13) (Fig. 4a). Therefore, it seems unlikely that southern sourced AAIW represents the source for the deglacial radiocarbon signals in the (sub)tropical East Pacific.

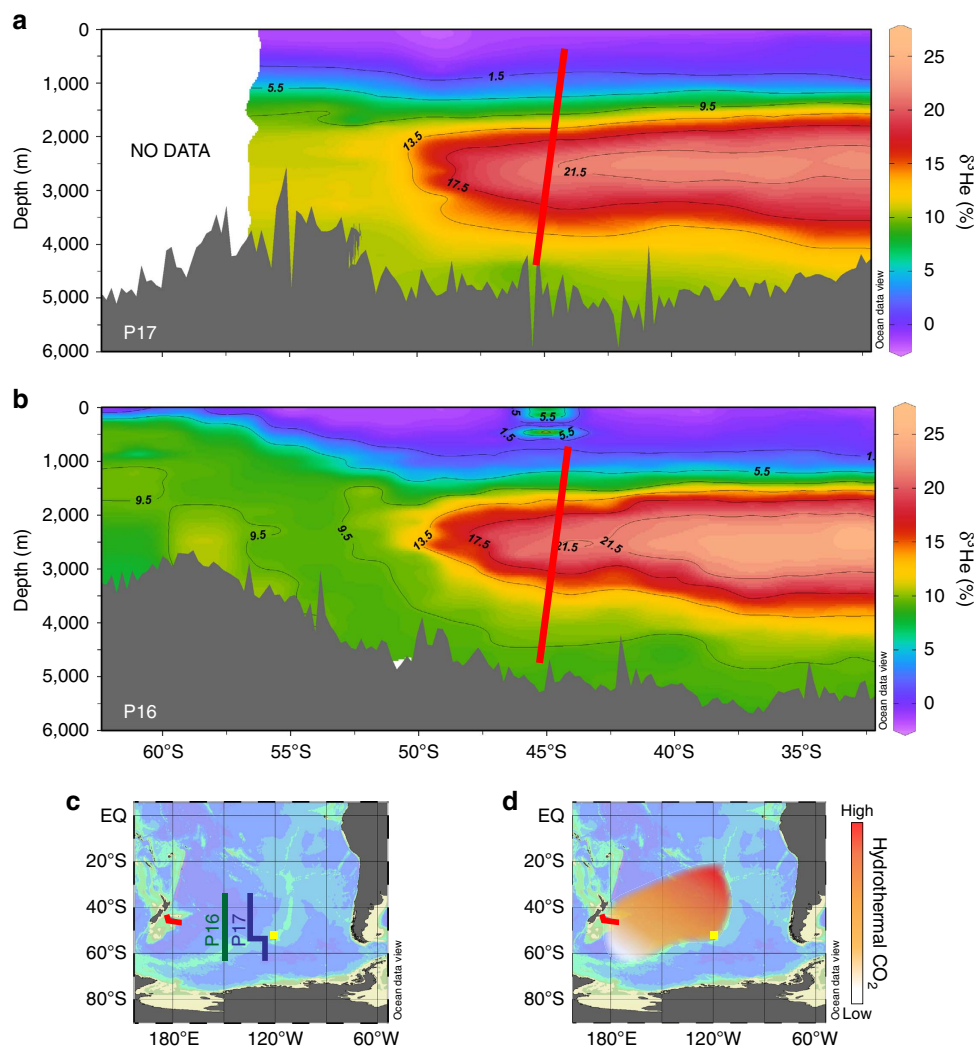
As we mentioned before, because of the close proximity, similar reservoir ages for all sediment cores are a requirement for our interpretations. However, the Holocene reservoir ages of two of our cores differ by  $\sim 1,000$  years (Supplementary Fig. 5). Although this offset does not change the overall story, it prevents us from discussing the data of this time interval in more detail.

Our reconstructions provide new insights into the evolution and dynamic of the marine carbon inventory, its aging and the process of  $\text{CO}_2$  release to the atmosphere. Growing evidence throughout large parts of the glacial South Pacific (this study; Skinner *et al.*<sup>6</sup>), the North Pacific<sup>21,28,29</sup>, the Drake Passage<sup>8</sup> and the South Atlantic<sup>4</sup> suggest the existence of a floating body of very old,  $^{14}\text{C}$ -depleted water between 2,000 and 4,300 m water depth, particularly in the tectonically active Pacific Ocean, where the glacial admixture of volcanic  $\text{CO}_2$  might have influenced the  $^{14}\text{C}$ -signature of this carbon pool from  $\sim 2,500$  to  $\sim 3,600$  m water depth. The effect of such volcanic  $\text{CO}_2$  flux on the global carbon cycle as a whole and on atmospheric  $\text{CO}_2$  in particular needs to be assessed in future studies, using more sophisticated models. During Termination 1, the atmosphere to deep-water  $\Delta^{14}\text{C}$  of the carbon reservoir was reduced from about  $-1,000\text{‰}$  to about  $-200\text{‰}$  (Fig. 4b), indicating the erosion of the glacial carbon pool. This erosion is in accordance with the concept of a deglacial breakdown of SO stratification<sup>3,45,46</sup> and intensified deglacial wind-driven SO upwelling<sup>2</sup>. These processes ultimately culminated in the release of  $^{14}\text{C}$ -depleted  $\text{CO}_2$  from the deep ocean reservoir to the atmosphere (Fig. 5b), although in detail, the interaction of processes affecting the biological and physical pumps—and thus atmospheric  $\text{CO}_2$ —was probably more complex<sup>47</sup>.

## Methods

**Sediment core details and sample treatment.** The water mass transect that forms the backbone of this study consists of seven sediment cores retrieved during





**Figure 8 | Dispersal of hydrothermal  $^3\text{He}$  in the Southwest Pacific.** The modern hydrothermal  $^3\text{He}$  plume, emanating at the southern EPR in a water depth of  $\sim 2,500$  m (refs 38 and 39), can be traced throughout the southern Pacific towards New Zealand<sup>41</sup>.  $^3\text{He}$  distribution along (a) WOCE line P17 (ref. 67) ( $\sim 135^\circ$  W) and (b) WOCE line P16 (ref. 67) ( $150^\circ$  W). (c) Locations of  $^3\text{He}$  sections P16 and P17. (d) Hypothesized dispersal of the glacial hydrothermal plume emanating from the EPR. Core locations and depths indicated by red bars and yellow squares. Panels generated using ODV 4.7.2 (ref. 68). WOCE, World Ocean Circulation Experiment.

the ANTXXVI/2 and SO213/2 cruises from the Bounty Trough off New Zealand (NZM) and from the EPR (Supplementary Figs 1 and 2). Collectively, these sediment cores record all water masses between 835 and 4,339 m, thus the modern water depths of the AAIW down to the Lower Circumpolar Deep Water with an imprint of Antarctic Bottom Water<sup>27</sup>. Positions, water depth, modern water masses and average sedimentation rates are reported in Supplementary Table 2.

An advantage of the NZM core transect is that it was not affected by potential glacial/interglacial shifts of the STF or the SAF<sup>48,49</sup>. The STF is bathymetrically fixed by the Chatham Rise (Supplementary Fig. 2), while the SAF is topographically steered by the submerged Campbell–Bounty Plateau<sup>48,49</sup>. As all sediment cores were located south of the STF and because of their close proximity to each other, we assume that changes in surface reservoir ages would affect all locations in a similar way. An exception is core PS75/059-2, which was retrieved  $\sim 4,200$  km east of the Bounty Trough, at the western flank of the EPR (Supplementary Fig. 1)  $\sim 2^\circ\text{N}$  of the SAF.

All sediment cores were split to form working and archival halves. The working half was sampled at 2 cm intervals. Depending on their water content, all samples were freeze dried for 2–3 days. Subsequently, the samples were wet sieved, using a  $63\ \mu\text{m}$  mesh sieve and dried at  $50^\circ\text{C}$  for 2 days. As a last step, all samples were subdivided into the size fractions  $> 400\ \mu\text{m}$ ,  $315\text{--}400\ \mu\text{m}$ ,  $250\text{--}315\ \mu\text{m}$ ,  $125\text{--}250\ \mu\text{m}$  and  $< 125\ \mu\text{m}$ . Benthic and planktic foraminifera were picked from 250 to  $315\ \mu\text{m}$  and 315 to  $400\ \mu\text{m}$  size fractions, taking great care to group similar sized individuals into samples for isotope analyses.

For the analysis of AAIW ventilation, we spliced sediment cores PS75/104-1 (835 m) and SO213-84-1 (972 m). We were forced, to combine both records as

PS75/104-1 did not yield a sufficient amount of benthic foraminiferal fauna below a core depth of  $\sim 100$  cm (LGM and older), while SO213-84-1 was significantly disturbed above  $\sim 50$  cm core depth (Termination 1 and younger).

**Radiocarbon measurements.** For the reconstruction of radiocarbon activities, corresponding pairs of planktic (monospecific *G. bulloides*) and benthic (mix of *Cibicides wuellerstorfi* and *Uvigerina peregrina*) foraminifera were picked. To minimize the effect of contamination on our analyses, we paid special attention not to pick any broken, discoloured or filled tests. Radiocarbon measurements were performed at the National Ocean Science Accelerator Mass Spectrometer (NOSAMS) facility in Woods Hole, USA, the W. M. Keck Carbon Cycle AMS Laboratory at the University of California in Irvine, USA and at the Laboratory for Ion Beam Physics at the Eidgenössische Technische Hochschule in Zurich, Switzerland.

We calculated the difference in benthic and reservoir-corrected planktic (B-P)  $^{14}\text{C}$ -ages to reconstruct the apparent ventilation ages of different water masses and compared our reconstructions with the method proposed by Cook and Keigwin<sup>21</sup> (Supplementary Fig. 4).

The equation of Adkins and Boyle<sup>50</sup> was used to determine the initial (paleo) radiocarbon activity ( $\Delta^{14}\text{C}$ ) of the benthic samples.

The difference of deep-water  $\Delta^{14}\text{C}$  to the contemporaneous past atmospheric  $\Delta^{14}\text{C}$  (called  $\Delta\Delta^{14}\text{C}$ ) is the offset of our data from the IntCal13 reference curve<sup>20</sup>.

Despite a potential bias by uncertainties in our age models and the IntCal13 (ref. 20) curve, we show in Supplementary Fig. 6 that the trend in  $\Delta\Delta^{14}\text{C}$  remains the same, regardless of the method used.

The radiocarbon dates for all cores are stored in the PANGAEA-database. Ventilation age errors were calculated from combined errors in  $^{14}\text{C}$  ages and calibrated calendar ages. The error in  $\Delta^{14}\text{C}$  was calculated from  $^{14}\text{C}$  and calibrated age errors. All  $^{14}\text{C}$ -data can be found in Supplementary Table 3 and on the PANGAEA-database.

**Age control.** For all sediment cores, an initial radiocarbon chronology was obtained from planktic  $^{14}\text{C}$ -datings. Planktic radiocarbon ages were calibrated to calendar ages, using the calibration software Calib 7.0 (refs 51 and 52) with the embedded SHCal13 calibration curve<sup>20</sup>. To account for surface reservoir effects, we corrected all  $^{14}\text{C}$ -ages according to reservoir age estimates by Skinner *et al.*<sup>6</sup>. However, to allow the use of  $^{14}\text{C}$  as an unbiased proxy for deep-water ventilation, we fine-tuned our records to the nearby reference core MD97-2120 (ref. 53) (Supplementary Figs 7–9). We chose MD97-2120 (1,210 m water depth) as a reference core because of its position close to our sediments cores in the Bounty Trough. The original stratigraphy of MD97-2120 (refs 53 and 54) is based on nine  $^{14}\text{C}$  measurements in the time interval between 0–35 kyr. Following the method applied by Rose *et al.*<sup>15</sup>, we correlated the planktic  $\delta^{18}\text{O}$  and Mg/Ca-derived SST records of MD97-2120 (ref. 54) with the EDC ice core  $\delta\text{D}$  record<sup>55,56</sup> (Supplementary Fig. 7). Correlating MD97-2120 via surface temperatures to Antarctic ice cores enables us to obtain a  $^{14}\text{C}$ -independent stratigraphy that we can use as the baseline for the X-ray fluorescence (XRF) core-to-core correlation.

At the Alfred Wegener Institute in Bremerhaven, Germany, all sediment cores were analysed for their specific element abundances using an Avaatech XRF core-scanner with a preset step width of 1 cm. The resulting element content records (Sr, Ca, Fe and Sr/Fe) were then correlated to respective age-scaled XRF records of the sediment core MD97-2120 (refs 53 and 54) from the southern Chatham Rise (Supplementary Fig. 8) using the computer program AnalySeries 2.0.4.2. In particular, the Sr-records were useful for the core-to-core correlation, as Sr represents  $\text{CaCO}_3$ , but is barely affected by differences in grain sizes or the sediments water-content<sup>57</sup>. Furthermore, we were able to utilize a distinctive vitric-rich tephra layer as a radiocarbon-independent stratigraphic marker within two sediment cores (SO213-76-2 and SO213-79-2). The tephra layer in both cores was geochemically characterized and identified as the widespread Kawakawa/Oruanui tephra (KOT; for analytical details see the section on tephra analyses). The KOT is a widespread silicic tephra erupted from Taupo Volcanic Centre in the central North Island of New Zealand with an age of  $\sim 25.36$  cal. ka (ref. 58) and is the most important isochronous tephra marker erupted in the SW-Pacific region during the past 30,000 years<sup>59</sup>. This tephra was likewise found in reference core MD97-2120 (ref. 54). We adjusted the KOT age used by Pahnke *et al.*<sup>54</sup> to the revised age by Vandergoes *et al.*<sup>58</sup>.

The age model of the EPR-core PS75/059-2 is based on the original approach of Lamy *et al.*<sup>60</sup>. However, as this age model lacks detailed tie-points between 0 and 30 cal. ka, we fine-tuned PS75/059-2 to the age-scaled record PS75/100-4, using their Sr XRF element counts. Despite a certain lack in the LGM variability of most XRF-records, we consider our age models as relatively robust. In particular the comparison of our records SO213-82-1 and SO213-76-2 to records from similar water depths in the South Pacific<sup>6</sup> (MD97-2121), the Drake Passage<sup>8</sup> (coral dredges) and the South Atlantic<sup>4</sup> (MD07-3076), reveals a similar timing as well as comparable  $\Delta\Delta^{14}\text{C}$ -values (Fig. 4) for all records.

The errors for the correlated age models were estimated from the offset to the  $^{14}\text{C}$ -derived age model plus  $^{14}\text{C}$ -errors.

Our XRF-based correlation method creates new surface reservoir ages for our sediment records. These differ from the surface reservoir age record of MD97-2121 (ref. 6), but are still in good agreement with these reconstructions (Supplementary Fig. 5). However, owing the XRF-correlation method, our reservoir ages show a slightly higher scatter than the records of Sikes *et al.*<sup>5</sup> and Skinner *et al.*<sup>6</sup>

**Tephra analyses.** In cores SO213-76-2 (507–508 cm) and SO213-79-2 (150–151 cm) a distinctive vitric-rich tephra layer was identified. Morphological expression, grain size and thickness of this tephra were indistinguishable and hence, most likely to represent the same eruptive event. Glass shard major element chemistry of this tephra layer was then determined by electron microprobe analysis and the results were compared with selected onshore and offshore KOT correlations (Supplementary Fig. 10). The glass shard geochemistries were consequently indistinguishable which (a) affirms correlation to KOT and (b) augments the overall chronology of this study. All major element determinations were made on a JEOL Superprobe (JXA-8230) housed at Victoria University of Wellington, using the ZAF correction method. Analyses were performed using an accelerating voltage of 15 kV under a static electron beam operating at 8 nA. The electron beam was defocused between 10 and 20  $\mu\text{m}$ . All elements calculated on a water-free basis, with  $\text{H}_2\text{O}$  by difference from 100%. Total Fe expressed as  $\text{FeO}_t$ . Mean and  $\pm 1$  s.d. (Supplementary Table 4; in parentheses), based on  $n$  analyses. All samples normalized against glass standards VG-568 and ATHO-G.

**Box modelling.** Here we make some first-order estimates investigating the hypothesis of an impact of a potential hydrothermal  $\text{CO}_2$  flux on the marine carbonate system and on  $\Delta^{14}\text{C}$  in the South Pacific. We simulate carbon cycle changes in a 1-box model water mass, which might represent the mid-depth South

Pacific waters  $\sim 2,500$ – $3,500$  m (Supplementary Fig. 4a). We start our carbon cycle simulations from an LGM state that was previously simulated with the BICYCLE model<sup>46</sup>. We thus perturb a water mass with dissolved inorganic carbon (DIC) concentration of  $\sim 2,600 \mu\text{mol kg}^{-1}$ , with a total alkalinity of  $2,667 \mu\text{mol kg}^{-1}$ . For LGM conditions (temperature  $\sim 0^\circ\text{C}$ ; salinity = 35.8 PSU), these factors would lead to a pH of 7.7 and a carbonate ion concentration of  $\sim 70 \mu\text{mol kg}^{-1}$ .

We base our calculations on changes in concentrations for an undefined volume of the water mass and increase the amplitude of hydrothermal  $\text{CO}_2$  until the  $^{14}\text{C}$ -anomaly, seen in our data, is reproduced by our most simplistic model.

Similar to our data from 2,066 m (SO213-82-1), Skinner *et al.*<sup>6</sup> provide an independent glacial ventilation age of  $\sim 2,700$  years, which decreases to  $\sim 1,500$  years at 18 cal. ka. To obtain a stable  $\Delta^{14}\text{C}$  of 0‰ in our water mass  $\sim 30$  cal. ka (Fig. 3a, black broken line), the incoming carbon flux from  $X_i$  from oceanic mixing processes has a  $\Delta^{14}\text{C}$  signature of +328‰. Corresponding to the decrease in ventilation age from 2,700 to 1,500 years, this flux increases at 18 cal. ka from 1 to 1.7  $\mu\text{mol per kg per year}$  (Supplementary Fig. 4c). The outgoing carbon flux  $X_o$ , leaving our simulated 1-box water mass via oceanic transport processes, is determined by the turnover/ventilation time  $\tau$ .  $X_o$  might change over time in size due to hydrothermal  $\text{CO}_2$  injection, causing a rise in DIC within the water parcel. For the time window of minimum sea level<sup>61</sup> (Supplementary Fig. 4b) between 30 and 15 cal. ka, we assume a hydrothermal  $\text{CO}_2$  flux (F) of 0, 0.3, 0.6, 0.9 or 1.2  $\mu\text{mol per kg per year}$  (Supplementary Fig. 4d–g). Please note that this approach assumes an instantaneous feedback of the hydrothermal  $\text{CO}_2$  outgassing rate to the removed load from the drop in global sea level and neglects any potential time delay in the solid earth response. Time delay of this process were briefly discussed previously<sup>18</sup> but might also be more complex<sup>19</sup>.

On millennial timescales, the injection of hydrothermal  $\text{CO}_2$  might lead to a partly dissolution of  $\text{CaCO}_3$  in oceanic sediments<sup>22,62</sup>. Via this process of carbonate compensation, carbonate ions are brought into solution and added to the DIC pool. In this dissolution flux (D), the ratio of alkalinity and DIC is 2:1. If enough  $\text{CaCO}_3$  is available for dissolution, the additional dissolution flux from carbonate compensation is on the order of 88% of the initial  $\text{CO}_2$  injection<sup>63</sup>. In case of insufficient amounts of available  $\text{CaCO}_3$ , carbonate ion concentration and pH would fall. So far, it is estimated that the amount of dissolvable sediments is restricted to  $\sim 1,600 \text{ PgC}$  (ref. 64), although simulation studies show that the actual dissolution for large  $\text{CO}_2$ -injections is smaller than this<sup>22</sup>. While the actual  $^{14}\text{C}$  signature of dissolved  $\text{CaCO}_3$  is not readily known, we assume the dissolution of  $^{14}\text{C}$ -free sediment as the upper limit. This assumption is supported by the existence of very old surface sediments in the pelagic Southeast Pacific off Chile<sup>65</sup>. For simplicity, we here calculate an instantaneous additional impact of carbonate compensation. However, since this process is in reality time delayed with an e-folding time of a few thousand years<sup>22</sup>, the most likely solution lies between both scenarios, with and without carbonate compensation.

In addition, we estimate the impact on  $\Delta^{14}\text{C}$ , if  $\text{CO}_2$ , of similar size (S) as the hydrothermal injection flux (F), is directly sequestered via magmatic processes<sup>23</sup>, leading to stable DIC concentrations.

Please note that the three processes considered here (hydrothermal  $\text{CO}_2$  flux F; carbonate dissolution D;  $\text{CO}_2$  sequestration S) are roughly estimated due to their potential impact on oceanic  $\Delta^{14}\text{C}$ . In detail, these processes might be time-delayed or offset from each other.

**Code availability.** The computer code for the 1-box model used to calculate the simulation results shown in Fig. 3 and Supplementary Fig. 4 is available upon request from one of the co-authors (PK; peter.koehler@awi.de).

## References

- Marcott, S. A. *et al.* Centennial-scale changes in the global carbon cycle during the last deglaciation. *Nature* **514**, 616–619 (2014).
- Anderson, R. F. *et al.* Wind-driven upwelling in the southern ocean and the deglacial rise in atmospheric  $\text{CO}_2$ . *Science* **323**, 1443–1448 (2009).
- Sigman, D. M., Hain, M. P. & Haug, G. H. The polar ocean and glacial cycles in atmospheric  $\text{CO}_2$  concentration. *Nature* **466**, 47–55 (2010).
- Skinner, L. C., Fallon, S., Waelbroeck, C., Michel, E. & Barker, S. Ventilation of the deep Southern Ocean and deglacial  $\text{CO}_2$  rise. *Science* **328**, 1147–1151 (2010).
- Sikes, E. L., Samson, C. R., Gulderson, T. P. & Howard, W. R. Old radiocarbon ages in the Southwest Pacific Ocean during the last glacial period and deglaciation. *Nature* **405**, 555–559 (2000).
- Skinner, L. C. *et al.* Reduced ventilation and enhanced magnitude of the deep Pacific carbon pool during the last glacial period. *Earth Planet. Sci. Lett.* **411**, 45–52 (2015).
- Sarnthein, M., Schneider, B. & Grootes, P. M. Peak glacial  $^{14}\text{C}$  ventilation ages suggest major draw-down of carbon into the abyssal ocean. *Clim. Past* **9**, 929–965 (2013).
- Chen, T. *et al.* Synchronous centennial abrupt events in the ocean and atmosphere during the last deglaciation. *Science* **349**, 1537–1541 (2015).
- DeVries, T. & Primeau, F. An improved method for estimating water-mass ventilation age from radiocarbon data. *Earth Planet. Sci. Lett.* **295**, 367–378 (2010).

10. Toggweiler, J. R., Russell, J. L. & Carson, S. R. Midlatitude westerlies, atmospheric CO<sub>2</sub>, and climate change during the ice ages. *Paleoceanography* **21**, PA2005 (2006).
11. Bostock, H. C., Sutton, P. J., Williams, M. J. M. & Opydyke, B. N. Reviewing the circulation and mixing of Antarctic intermediate water in the South Pacific using evidence from geochemical tracers and Argo float trajectories. *Deep-Sea Res. I* **73**, 84–98 (2013).
12. Marchitto, T. M., Lehman, S. J., Ortiz, J. D., Flückinger, J. & van Geen, A. Marine radiocarbon evidence for the mechanism of deglacial atmospheric CO<sub>2</sub> rise. *Science* **316**, 1456–1459 (2007).
13. Stott, L. D., Southon, J., Timmermann, A. & Koutavas, A. Radiocarbon age anomaly at intermediate water depth in the Pacific Ocean during the last deglaciation. *Paleoceanography* **24**, PA2223 (2009).
14. De Pol-Holz, R., Keigwin, L. D., Southon, J., Hebbeln, D. & Mohtadi, M. No signature of abyssal carbon in intermediate waters off Chile during deglaciation. *Nat. Geosci.* **3**, 192–195 (2010).
15. Rose, K. A. *et al.* Upper-ocean-to-atmosphere radiocarbon offsets imply fast deglacial carbon dioxide release. *Nature* **466**, 1093–1097 (2010).
16. Lindsay, C. M., Lehman, S. J., Marchitto, T. M. & Ortiz, J. D. The surface expression of radiocarbon anomalies near Baja California during deglaciation. *Earth Planet. Sci. Lett.* **422**, 67–74 (2015).
17. Lund, D. C. & Asimow, P. D. Does sea level influence mid-ocean ridge magmatism on Milankovitch timescales? *Geochem. Geophys. Geosyst.* **12**, Q12009 (2011).
18. Tolstoy, M. Mid-ocean ridge eruptions as a climate valve. *Geophys. Res. Lett.* **42**, 1346–1351 (2015).
19. Crowley, J. W., Katz, R. F., Huybers, P., Langmuir, C. H. & Park, S.-H. Glacial cycles drive variations in the production of oceanic crust. *Science* **347**, 1237–1240 (2015).
20. Reimer, P. J. *et al.* IntCal13 and Marine13 radiocarbon age calibration curves 0–50,000 years Cal BP. *Radiocarbon* **55**, 1869–1887 (2013).
21. Cook, M. S. & Keigwin, L. D. Radiocarbon profiles of the NW Pacific from the LGM and deglaciation: evaluating ventilation metrics and the effect of uncertain surface reservoir ages. *Paleoceanography* **30**, 174–195 (2015).
22. Archer, D., Khesghi, H. & Maier-Reimer, E. Multiple timescales for neutralization of fossil fuel CO<sub>2</sub>. *Geophys. Res. Lett.* **24**, 405–408 (1997).
23. Alt, J. C. & Teagle, D. A. H. The uptake of carbon during alteration of ocean crust. *Geochim. Cosmochim. Acta* **63**, 1527–1535 (1999).
24. Burton, M. R., Sawyer, G. M. & Granieri, D. Deep carbon emissions from volcanoes. *Rev. Mineral. Geochem.* **75**, 323–354 (2013).
25. Bostock, H. C., Hayward, B. W., Neil, H. L., Currie, K. I. & Dunbar, G. B. Deep-water carbonate concentrations in the Southwest Pacific. *Deep-Sea Res. I* **58**, 72–85 (2011).
26. Köhler, P., Muscheler, R. & Fischer, H. A model-based interpretation of low-frequency changes in the carbon cycle during the last 120,000 years and its implications for the reconstruction of atmospheric  $\Delta^{14}\text{C}$ . *Geochem. Geophys. Geosyst.* **7**, Q11N06 (2006).
27. McCave, I. N., Carter, L. & Hall, I. R. Glacial-interglacial changes in water mass structure and flow in the SW Pacific Ocean. *Quat. Sci. Rev.* **27**, 1886–1908 (2008).
28. Rae, J. W. B. *et al.* Deep water formation in the North Pacific and deglacial CO<sub>2</sub> rise. *Paleoceanography* **29**, 645–667 (2014).
29. Sarinthein, M., Grootes, P. M., Kennet, J. P. & Nadeau, M.-J. in *Ocean Circulation: Mechanisms and Impacts—Past and Future Changes of Meridional Overturning* Vol. 173 (eds Schmittner, A., Chiang, J. C. H. & Hemming, S. R.) 175–196 (AGU, 2007).
30. Ferrari, R. *et al.* Antarctic sea ice control on ocean circulation in present and glacial climates. *Proc. Natl Acad. Sci. USA* **111**, 8753–8758 (2014).
31. Burke, A. *et al.* The glacial mid-depth radiocarbon bulge and its implications for the overturning circulation. *Paleoceanography* **30**, 1021–1039 (2015).
32. Broecker, W. & Clark, E. Search for a glacial-age <sup>14</sup>C-depleted ocean reservoir. *Geophys. Res. Lett.* **37**, L13606 (2010).
33. Kohfeld, K. E. *et al.* Southern Hemisphere westerly wind changes during the Last Glacial Maximum: paleo-data synthesis. *Quat. Sci. Rev.* **68**, 76–95 (2013).
34. Ronge, T. A. *et al.* Pushing the boundaries: Glacial/Interglacial variability of intermediate- and deep-waters in the southwest Pacific over the last 350,000 years. *Paleoceanography* **30**, 23–38 (2015).
35. Adkins, J. F. The role of deep ocean circulation in setting glacial climates. *Paleoceanography* **28**, 539–561 (2013).
36. Hain, M. P., Sigman, D. M. & Haug, G. H. Shortcomings of the isolated abyssal reservoir model for deglacial radiocarbon changes in the mid-depth Indo-Pacific Ocean. *Geophys. Res. Lett.* **38**, L04604 (2011).
37. Hain, M. P., Sigman, D. M. & Haug, G. H. Distinct roles of the Southern Ocean and North Atlantic in the deglacial atmospheric radiocarbon decline. *Earth Planet. Sci. Lett.* **394**, 198–208 (2014).
38. Lupton, J. Hydrothermal helium plumes in the Pacific Ocean. *J. Geophys. Res.* **103**, 15853–15868 (1998).
39. Lupton, J. & Craig, H. A major Helium-3 source at 15°S on the East Pacific Rise. *Science* **214**, 13–18 (1981).
40. Talley, L. D. *Hydrographic Atlas of the World Ocean Circulation Experiment (WOCE). Vol. 2: Pacific Ocean* (eds Sparrow, M., Chapman, P. & Gould, J.) (International WOCE Project Office, Southampton, UK, 2007).
41. de Ronde, C. E. J. *et al.* Intra-oceanic subduction-related hydrothermal venting, Kermadec volcanic arc, New Zealand. *Earth. Planet. Sci. Lett.* **193**, 359–369 (2001).
42. Sano, Y. & Marty, B. Origin of carbon in fumarolic gas from island arcs. *Chem. Geol.* **119**, 265–274 (1995).
43. Deines, P. The carbon isotope geochemistry of mantle xenoliths. *Earth Sci. Rev.* **247–278** (2002).
44. Stott, L. D. & Timmermann, A. in *Abrupt Climate Change: Mechanisms, Patterns, and Impacts* (eds Harunur, R., Polyak, L. & Mosley-Thompson, E.) 123–138 (American Geophysical Union, 2011).
45. Schmitt, J. *et al.* Carbon isotope constraints on the deglacial CO<sub>2</sub> rise from ice cores. *Science* **336**, 711–714 (2012).
46. Köhler, P., Fischer, H., Munhoven, G. & Zeebe, R. E. Quantitative interpretation of atmospheric carbon records over the last glacial termination. *Global Biochem. Cycles* **19**, GB4020 (2005).
47. Völker, C. & Köhler, P. Responses of ocean circulation and carbon cycle to changes in the position of the Southern Hemisphere westerlies at Last Glacial Maximum. *Paleoceanography* **28**, 726–739 (2013).
48. Sikes, E. L., Howard, W. R., Neil, H. L. & Volkman, J. K. Glacial-interglacial sea surface temperature changes across the subtropical front east of New Zealand based on alkenone unsaturation ratios and foraminiferal assemblages. *Paleoceanography* **17**, PA000640 (2002).
49. Hayward, B. W. *et al.* The effect of submerged plateaux on Pleistocene gyral circulation and sea-surface temperatures in the Southwest Pacific. *Global Planet. Change* **63**, 309–316 (2008).
50. Adkins, J. F. & Boyle, E. A. Changing atmospheric  $\Delta^{14}\text{C}$  and the record of deepwater paleovegetation ages. *Paleoceanography* **12**, 337–344 (1997).
51. Stuiver, M. & Reimer, P. J. Extended 14C Data Base and Revised Calib 3.0 <sup>14</sup>C Age Calibration Program. *Radiocarbon* **35**, 215–230 (1993).
52. Calib 7.0 v. 7.0. Available at: <http://calib.qub.ac.uk> (2014).
53. Pahnke, K. & Zahn, R. Southern Hemisphere water mass conversion linked with North Atlantic climate variability. *Science* **307**, 1741–1746 (2005).
54. Pahnke, K., Zahn, R., Elderfield, H. & Schulz, M. 340,000-Year centennial-scale marine record of Southern Hemisphere climatic oscillation. *Science* **301**, 948–952 (2003).
55. EPICA Community Members. One-to-one coupling of glacial climate variability in Greenland and Antarctica. *Nature* **444**, 195–198 (2006).
56. Veres, D. *et al.* The Antarctic ice core chronology (AICC2012): an optimized thousand years multi-parameter and multi-site dating approach for the last 120. *Clim. Past* **9**, 1773–1748 (2013).
57. Tjallingii, R., Kölling, M. & Bickert, T. Influence of the water content on X-ray fluorescence core-scanning measurements in soft marine sediments. *Geochem. Geophys. Geosyst.* **8**, Q02004 (2007).
58. Vandergoes, M. J. *et al.* A revised age for the Kawakawa/Oruanui tephra, a key marker for the Last Glacial Maximum in New Zealand. *Quat. Sci. Rev.* **74**, 195–201 (2013).
59. Alloway, B. *et al.* Towards a climate event stratigraphy for New Zealand over the past 30 000 years (NZ-INTIMATE project). *J. Quat. Sci.* **22**, 9–35 (2007).
60. Lamy, F. *et al.* Increased dust deposition in the Pacific Southern Ocean during glacial periods. *Science* **343**, 403–407 (2014).
61. Bintanja, R., van de Wal, R. S. W. & Oerlemans, J. Modelled atmospheric temperatures and global sea levels over the past million years. *Nature* **437**, 125–128 (2005).
62. Zeebe, R. E. & Caldeira, K. Close mass balance of long-term carbon fluxes from ice-core CO<sub>2</sub> and ocean chemistry records. *Nat. Geosci.* **1**, 312–315 (2008).
63. Zeebe, R. E. & Wolf-Gladrow, D. in *CO<sub>2</sub> in Seawater: Equilibrium, Kinetics, Isotopes* Vol. 65 Elsevier Oceanography Series. (eds Zeebe, R. E. & Wolf-Gladrow, D. Ch. 3, 141–250 (Elsevier, 2001).
64. Archer, D. An Atlas of the distribution of calcium carbonate in sediments of the deep sea. *Global Biochem. Cycles* **10**, 159–174 (1996).
65. Tiedemann, R. *FS Sonne Fahrtbericht/Cruise Report SO213* (Alfred Wegener Institute, 2012).
66. Orsi, A. H., Whitworth, III T. & Nowlin, Jr W. D. On the meridional extent and fronts of the Antarctic circumpolar current. *Deep Sea Res. I* **42**, 641–673 (1995).
67. Key, R. M. *et al.* A global ocean carbon climatology: results from Global Data Analysis Project (GLODAP). *Global Biochem. Cycles* **18**, GB4031 (2004).
68. Ocean Data View v. 4.7.2. Available at: <http://owa.awi.de> (2015).
69. WAIS Divide Project Members. Onset of deglacial warming in West Antarctica driven by local orbital forcing. *Nature* **500**, 440–444 (2013).
70. Hand, E. Seafloor grooves record the beat of the ice ages. *Science* **347**, 593–594 (2015).

## Acknowledgements

We thank the crews of *R/V Sonne* and *R/V Polarstern*; M. Sarnthein for helpful comments; R. Fröhling, B. Glückselig, N. Lensch, L. Ritzenhofen, L. Schönborn, M. Seebeck, R. Sieger, M. Warnkroß and S. Wiebe for technical support. T.A.R. was funded by the Federal Ministry of Education and Research (BMBF; Germany) project 03G0213A—SOPATRA. BVA received funded support from an internal Victoria University of Wellington Science Faculty Research Grant. R.D.P.-H. was funded by Chilean FONDAP 15110009 and Iniciativa Científica Milenio NC120066. Data are available at <http://doi.pangaea.de/10.1594/PANGAEA.833663>.

## Author contributions

T.A.R., R.T. and F.L. designed the study and wrote most of the manuscript; T.A.R. performed XRF measurements; T.A.R., R.D.P.-H., L.W. and J.S. performed accelerator mass spectrometry measurements; P.K. constructed the box model to calculate the effect of hydrothermal CO<sub>2</sub>-injection on  $\Delta^{14}\text{C}$ ; K.P. provided XRF measurements on reference core MD97–2120; B.V.A. performed tephra analyses; all authors contributed to the written manuscript.

## Additional information

**Supplementary Information** accompanies this paper at <http://www.nature.com/naturecommunications>

**Competing financial interests:** The authors declare no competing financial interests.

**Reprints and permission** information is available online at <http://npg.nature.com/reprintsandpermissions/>

**How to cite this article:** Ronge, T. A. *et al.* Radiocarbon constraints on the extent and evolution of the South Pacific glacial carbon pool. *Nat. Commun.* 7:11487 doi: 10.1038/ncomms11487 (2016).



This work is licensed under a Creative Commons Attribution 4.0 International License. The images or other third party material in this article are included in the article's Creative Commons license, unless indicated otherwise in the credit line; if the material is not included under the Creative Commons license, users will need to obtain permission from the license holder to reproduce the material. To view a copy of this license, visit <http://creativecommons.org/licenses/by/4.0/>