


Reconstructing the Kom W pottery assemblage 100 years on

Kom W in context III

Joshua Emmitt

 @joshemmitt

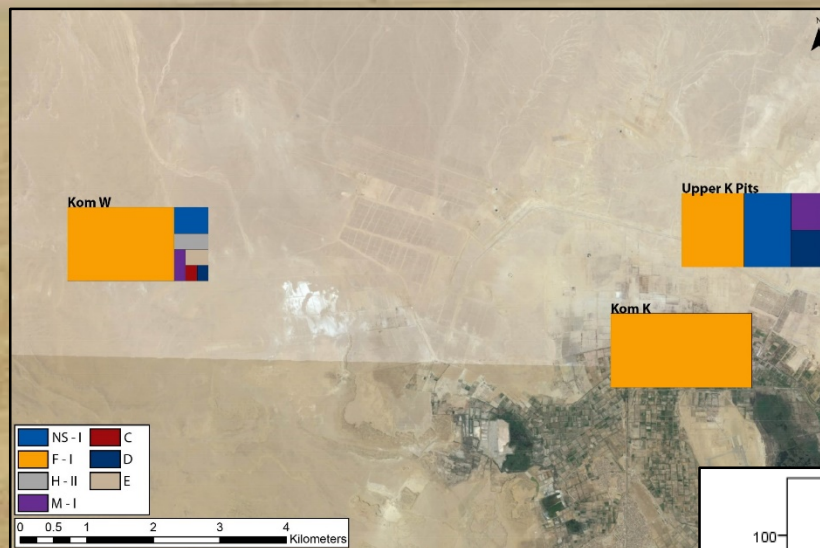
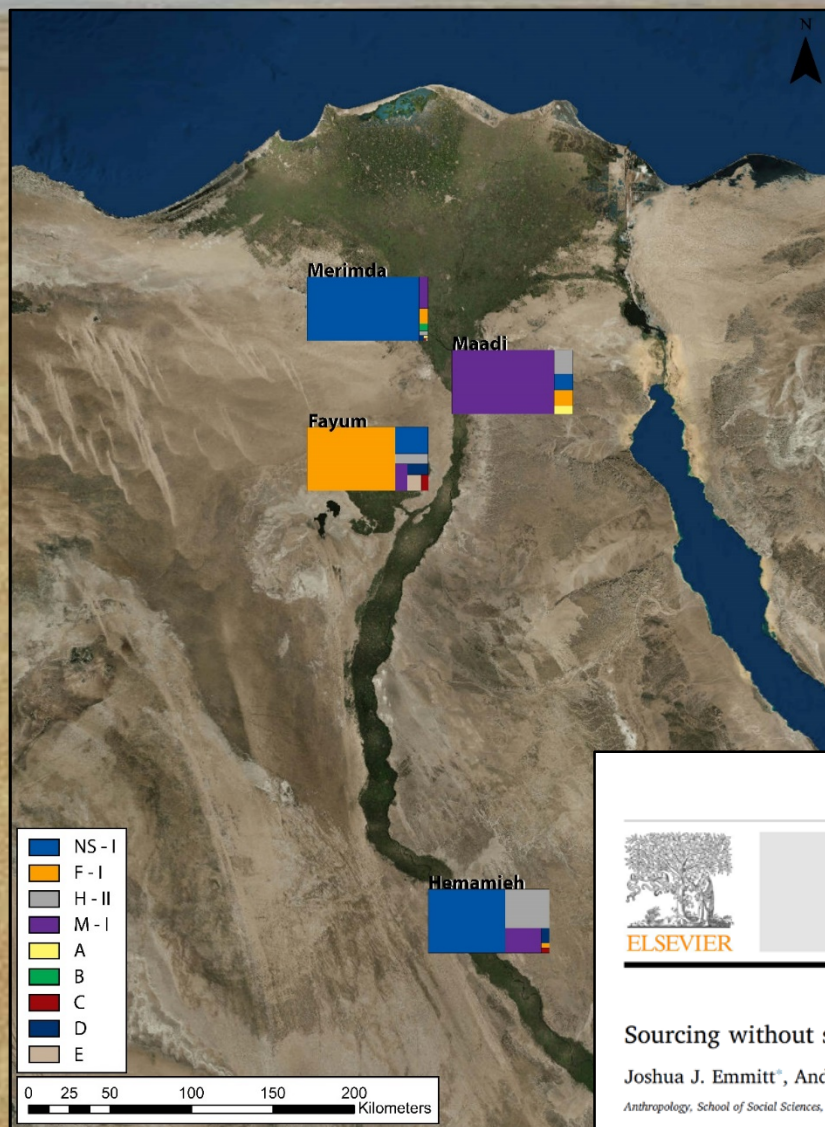
Fayum pottery

"...hand-made, in coarse clay, full of chaff..."

Caton-Thompson and Gardner 1934: 35



Pottery from the Fayum(?)



Journal of Archaeological Science: Reports 17 (2018) 422–432

Contents lists available at ScienceDirect

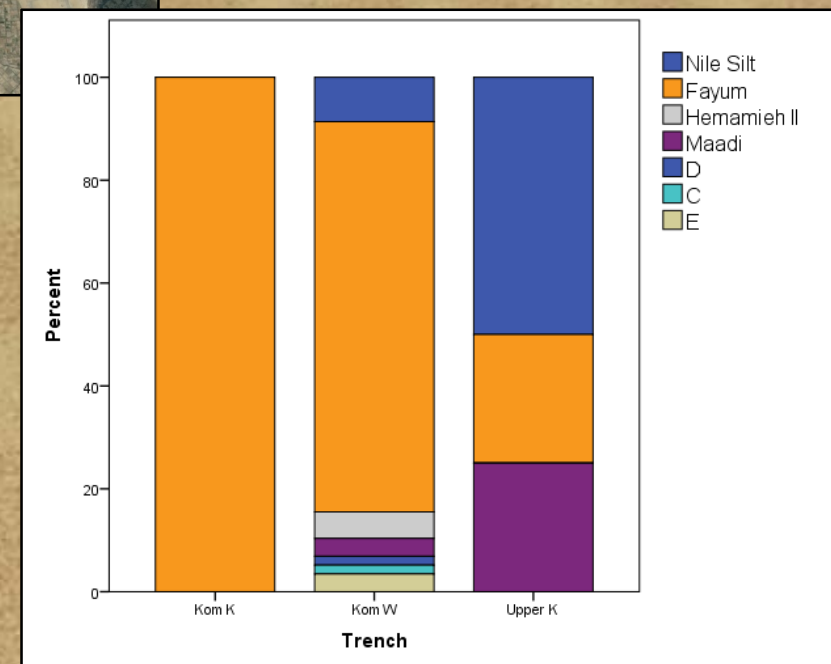
Journal of Archaeological Science: Reports

journal homepage: www.elsevier.com/locate/jasrep

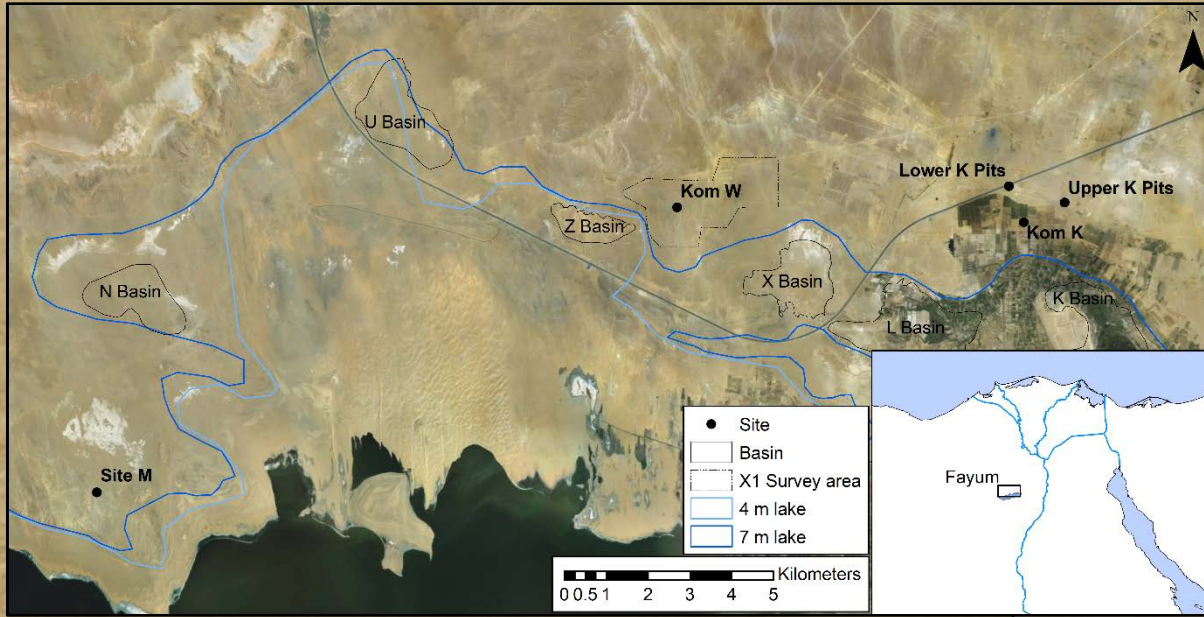
Sourcing without sources: Measuring ceramic variability with pXRF

Joshua J. Emmitt*, Andrew J. McAlister, Rebecca S. Phillips, Simon J. Holdaway

Anthropology, School of Social Sciences, the University of Auckland, Auckland, New Zealand



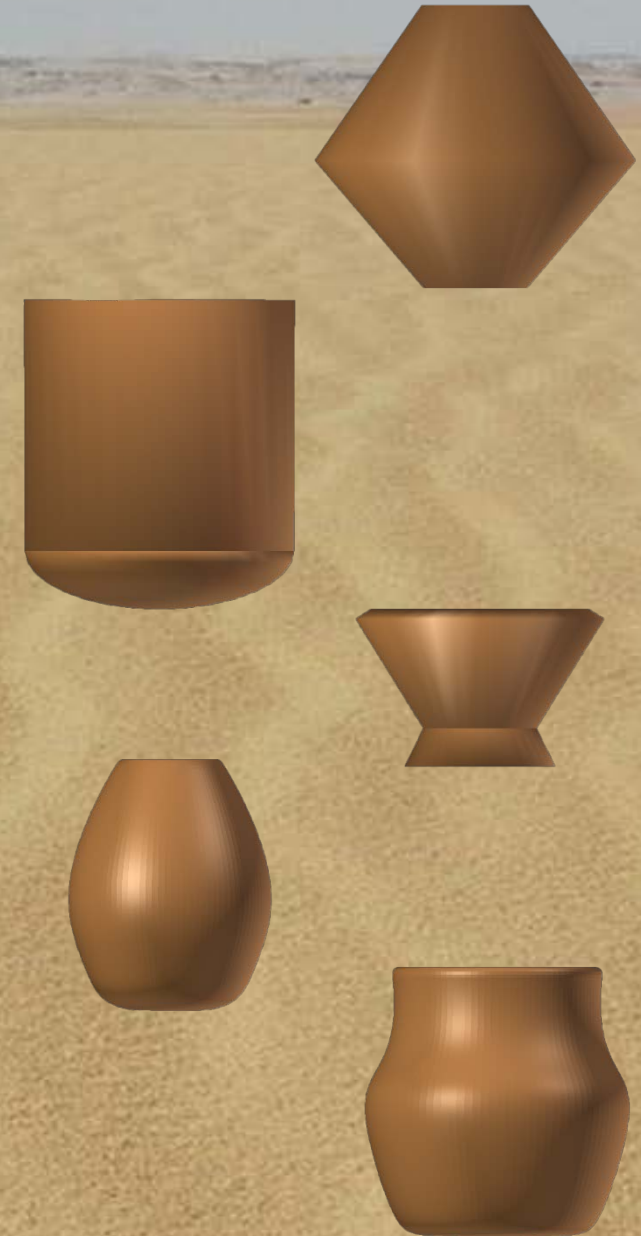
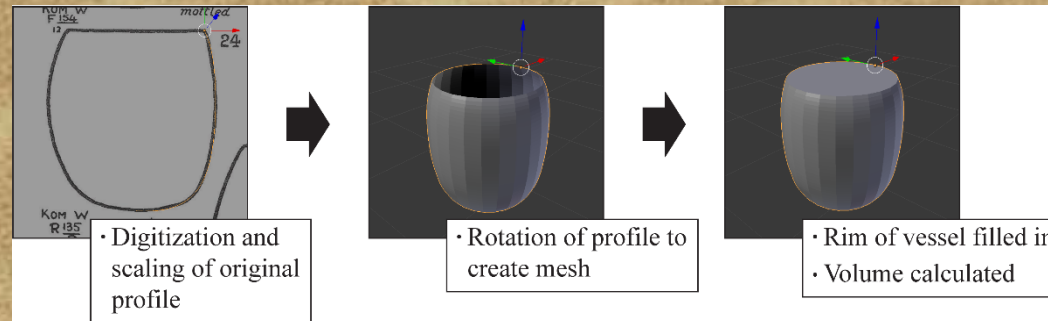
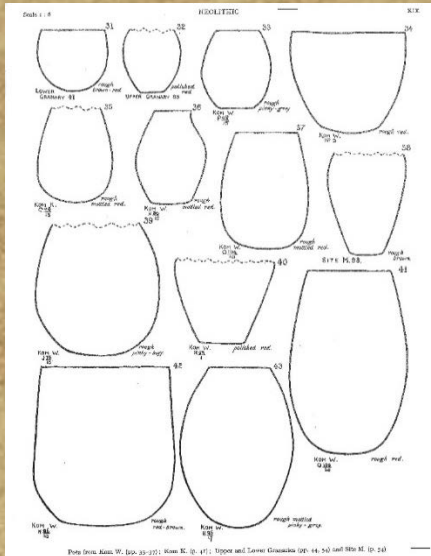
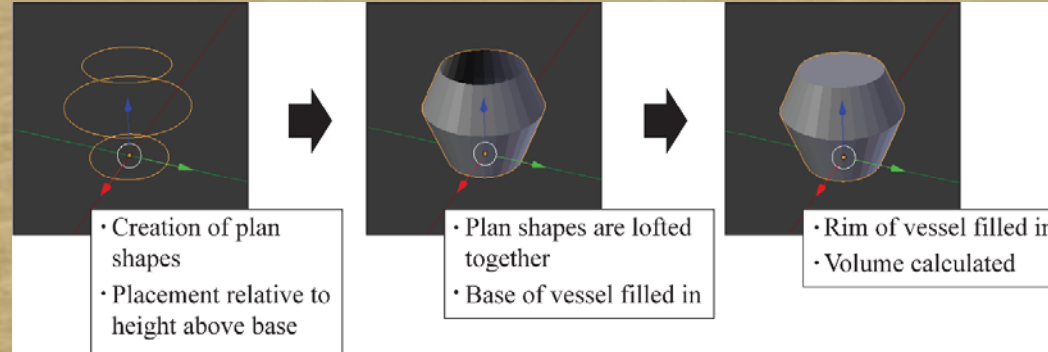
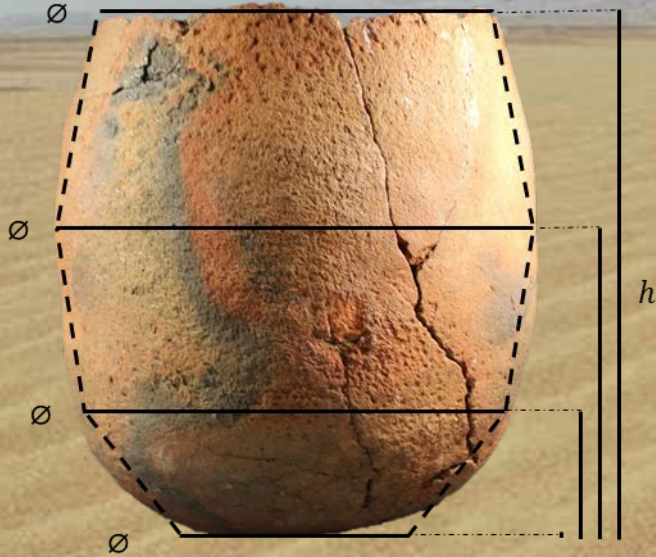
Distribution



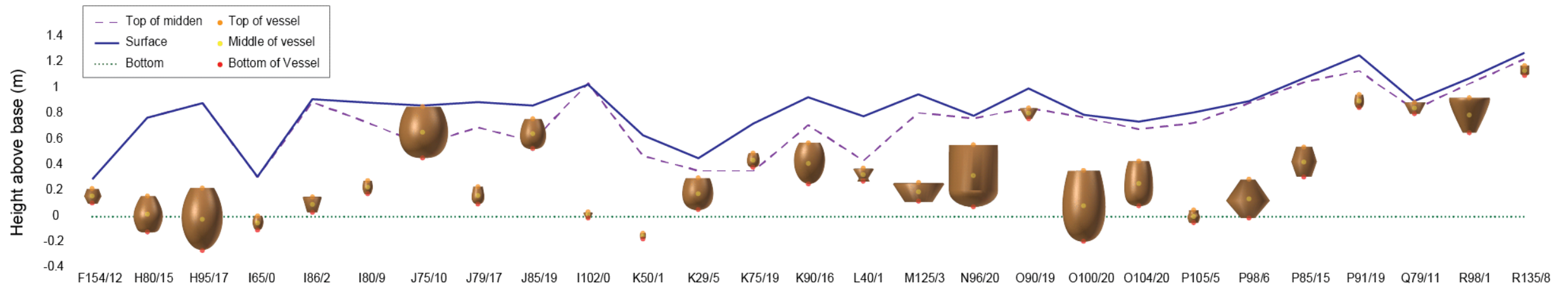
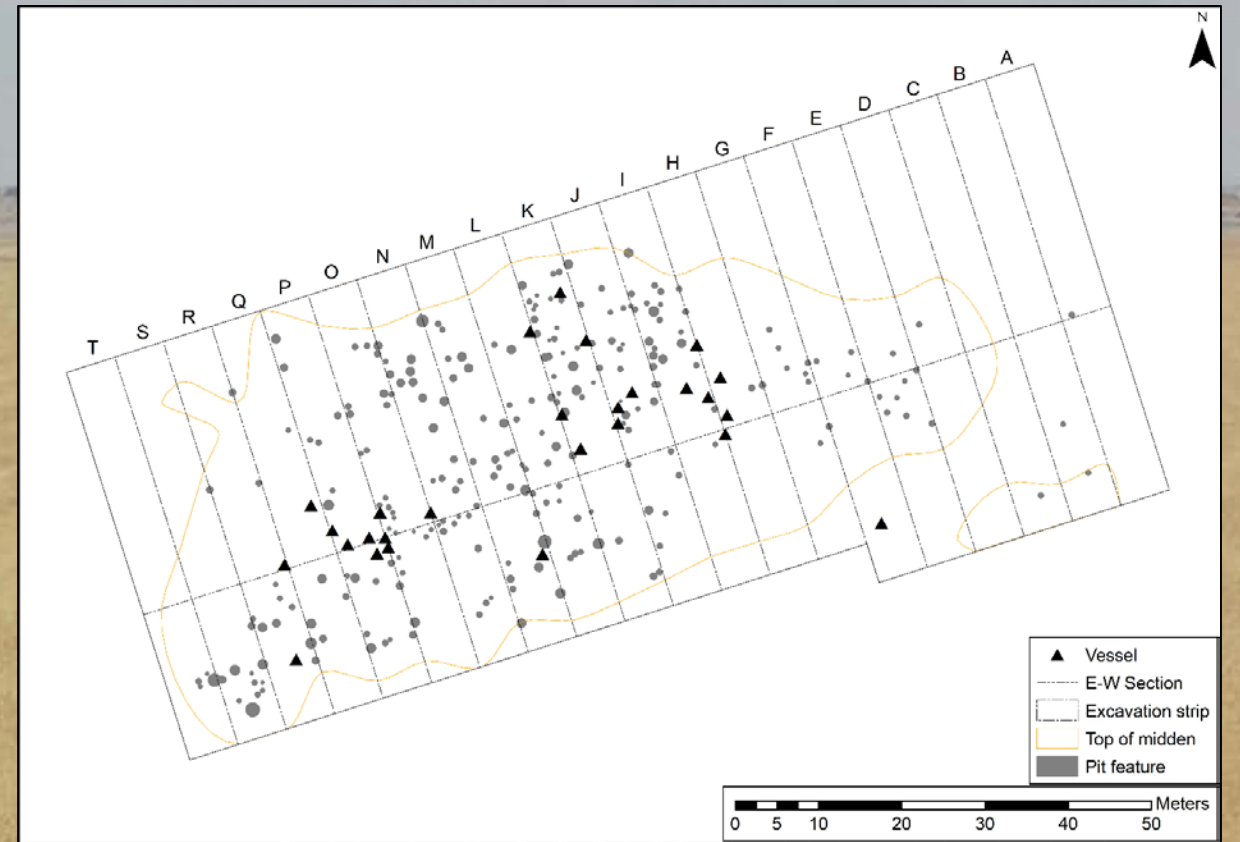
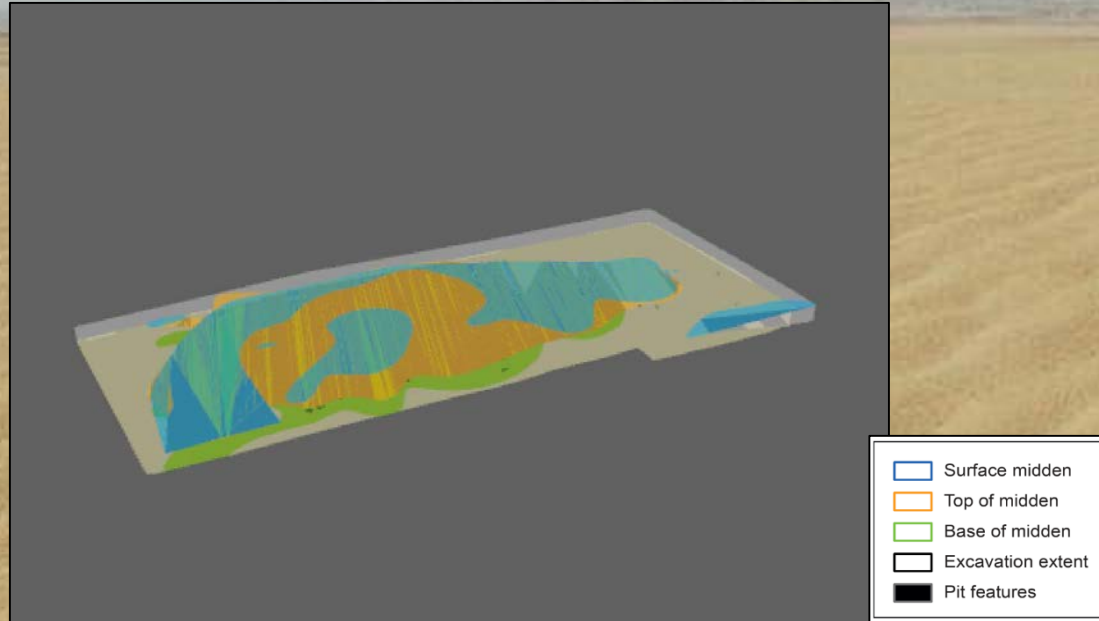
Kom W Pottery



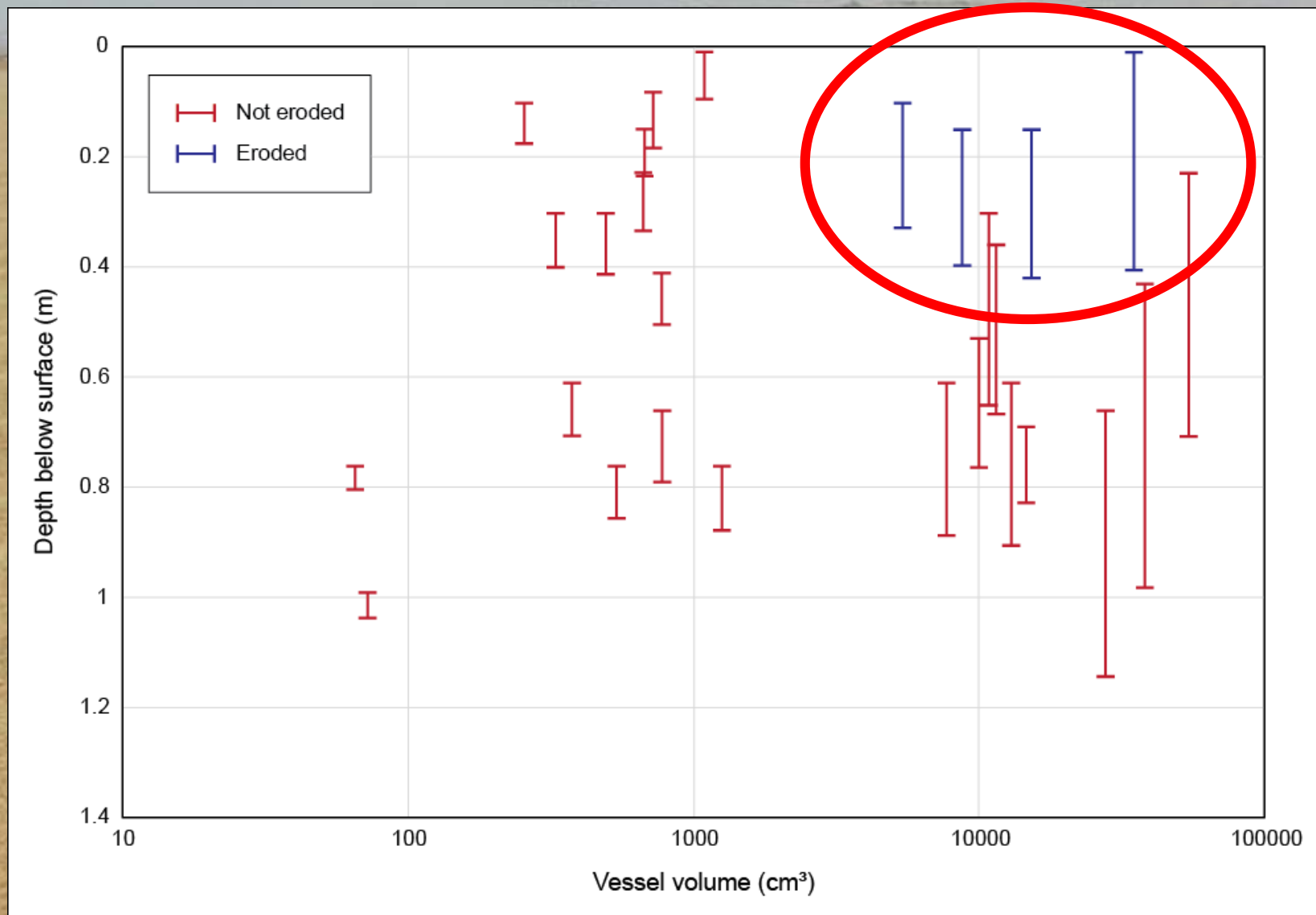
Vessel reconstruction



Vessel elevation



Volume and depth



Storage in the Fayum



Formation and form

