



Since January 2020 Elsevier has created a COVID-19 resource centre with free information in English and Mandarin on the novel coronavirus COVID-19. The COVID-19 resource centre is hosted on Elsevier Connect, the company's public news and information website.

Elsevier hereby grants permission to make all its COVID-19-related research that is available on the COVID-19 resource centre - including this research content - immediately available in PubMed Central and other publicly funded repositories, such as the WHO COVID database with rights for unrestricted research re-use and analyses in any form or by any means with acknowledgement of the original source. These permissions are granted for free by Elsevier for as long as the COVID-19 resource centre remains active.



ELSEVIER

Contents lists available at ScienceDirect

The Lancet Regional Health - Western Pacific

journal homepage: www.elsevier.com/locate/lanwpc

Research paper

COVID-19 vaccine strategies for Aotearoa New Zealand: a mathematical modelling study

Trung Nguyen, PhD^{1,#}, Mehnaz Adnan, PhD^{1,#}, Binh P Nguyen, PhD^{2,#}, Joep de Ligt, PhD¹, Jemma L Geoghegan, PhD³, Richard Dean, MSc¹, Sarah Jefferies, MD¹, Michael G Baker, MBChB⁴, Winston KG Seah, DrEng⁵, Andrew A Sporle, MA(Hons)⁶, Nigel Peter French, PhD⁷, David R Murdoch, MD⁸, David Welch, PhD⁹, Colin R Simpson, PhD^{10,11,*}

¹ Institute of Environmental Science and Research, New Zealand² School of Mathematics and Statistics, Victoria University of Wellington, New Zealand³ Department of Microbiology and Immunology, University of Otago, New Zealand and Institute of Environmental Science and Research, New Zealand⁴ Department of Public Health, University of Otago, New Zealand⁵ School of Engineering and Computer Science, Victoria University of Wellington, New Zealand⁶ Department of Statistics, The University of Auckland, New Zealand and iNZight Analytics Ltd⁷ School of Veterinary Science, Massey University, New Zealand⁸ Department of Pathology and Biomedical Science, University of Otago, New Zealand⁹ School of Computer Science, The University of Auckland, New Zealand¹⁰ School of Health, Wellington Faculty of Health, Victoria University of Wellington, Wellington, New Zealand¹¹ Usher Institute, The University of Edinburgh, Edinburgh, United Kingdom

ARTICLE INFO

Article history:

Received 5 May 2021

Revised 15 July 2021

Accepted 29 July 2021

Keywords:

SARS-CoV-2

COVID-19

Vaccination

Modelling

Elimination

Herd immunity threshold

Vaccine effectiveness

ABSTRACT

Background: COVID-19 elimination measures, including border closures have been applied in New Zealand. We have modelled the potential effect of vaccination programmes for opening borders.

Methods: We used a deterministic age-stratified Susceptible, Exposed, Infectious, Recovered (SEIR) model. We minimised spread by varying the age-stratified vaccine allocation to find the minimum herd immunity requirements (the effective reproduction number $R_{\text{eff}} < 1$ with closed borders) under various vaccine effectiveness (VE) scenarios and R_0 values. We ran two-year open-border simulations for two vaccine strategies: minimising R_{eff} and targeting high-risk groups.

Findings: Targeting of high-risk groups will result in lower hospitalisations and deaths in most scenarios. Reaching the herd immunity threshold (HIT) with a vaccine of 90% VE against disease and 80% VE against infection requires at least 86.5% total population uptake for $R_0 = 4.5$ (with high vaccination coverage for 30–49-year-olds) and 98.1% uptake for $R_0 = 6$. In a two-year open-border scenario with 10 overseas cases daily and 90% total population vaccine uptake (including 0–15 year olds) with the same vaccine, the strategy of targeting high-risk groups is close to achieving HIT, with an estimated 11,400 total hospitalisations (peak 324 active and 36 new daily cases in hospitals), and 1,030 total deaths.

Interpretation: Targeting high-risk groups for vaccination will result in fewer hospitalisations and deaths with open borders compared to targeting reduced transmission. With a highly effective vaccine and a high total uptake, opening borders will result in increasing cases, hospitalisations, and deaths. Other public health and social measures will still be required as part of an effective pandemic response.

Funding: This project was funded by the Health Research Council [20/1018].

Research in context

© 2021 The Author(s). Published by Elsevier Ltd.

This is an open access article under the CC BY license (<http://creativecommons.org/licenses/by/4.0/>)

* Corresponding author: Prof. Colin R Simpson PhD, School of Health, Wellington Faculty of Health, Victoria University of Wellington, Wellington, New Zealand and Usher Institute, The University of Edinburgh, Edinburgh, United Kingdom

E-mail address: colin.simpson@vuw.ac.nz (C.R. Simpson).

These authors contributed equally

Evidence before this study

We searched PubMed, medRxiv and SSRN for modelling studies using the term “COVID-19 vaccine AND model AND New Zealand”. We found one study by Bubar et al. which investigated age-related vaccine allocations to minimise the total deaths for countries without community transmission where total vaccination supply was limited to 50% of the population and found that direct vaccination of adults aged over 60 years nearly always reduced mortality. Moore et al. predicted a reproduction number of 1.58 after implementing vaccination in the UK and highlighted the risks of early relaxation of non-pharmaceutical interventions. Sandmann et al. also considered, in a 10-year simulation, the economic impact in the UK and suggested that with COVID-19 vaccination, small outbreaks could continue.

Added value of this study

To our knowledge, this is the first detailed COVID-19 vaccination programme modelling for Aotearoa New Zealand, a country with closed borders and a COVID-19 elimination strategy. We forecast the effect of strategies of minimising disease spread in the community and prioritisation of high-risk age groups. We modelled different vaccination programme strategies for the following health outcomes: number of cases, hospitalisations, and deaths over two years with open borders.

Implications of all the available evidence

To achieve the herd immunity threshold (HIT) (where $R_0=4.5$), and limit community transmission (e.g. sporadic outbreaks) once borders are opened, a vaccine that has a vaccine effectiveness of 90% for disease prevention and 80% for infection reduction will require high vaccination coverage for 30–49-year-olds, and at least 86.5% total population uptake. A number of possible scenarios were modelled including where 10 overseas cases are introduced daily with open-borders and 90% total population vaccine uptake with a vaccine with VE of 90% for disease prevention and 80% for infection reduction, and prioritisation of high-risk groups for vaccination. In the two-year simulation, this scenario was forecasted to have 11,400 total hospitalisations (peak 324 active and 36 new daily cases in hospitals), and 1,030 total deaths. Where 0–11 year olds are not vaccinated and total population uptake is 80% (the maximum uptake is 84.9% and HIT is not achieved) there is an estimated 37,700 total hospitalisations (peak 2,980 active and 343 new daily cases in hospitals), and 3,120 total deaths. Other non-pharmaceutical interventions will still be required to sustain the pandemic response. These findings can support policy makers in New Zealand (including the Ministry of Health) to inform their vaccination programme and is generalisable to other countries with closed borders and elimination strategies to ensure optimal vaccination programmes.

Introduction

COVID-19 has caused widespread morbidity and more than 4.0 million deaths globally as of July 9th, 2021¹ with extensive social and economic consequences.² To prevent COVID-19 outbreaks, New Zealand (NZ) adopted an early elimination strategy with non-pharmaceutical interventions, referred to as public health and social measures (PHSMs) in this paper.^{3,4}

PHSMs, such as border controls, lockdown measures, quarantine, and comprehensive testing, surveillance, and contact tracing, have led to the elimination of COVID-19 transmission in NZ, but there are expectations that NZ will begin to reopen its

border once the vaccination programme has progressed. Opening borders without strict isolation will continuously introduce COVID-19 to the community. The NZ government is undertaking a vaccination programme⁵ to protect NZ communities. Vaccination modelling can help anticipate potential public health outcomes based on different vaccine effectiveness (VE) reported in clinical trials⁶ and ‘real-world’ studies,^{7–10} and vaccination programme strategies.⁵ Estimates of the minimal vaccine coverage for herd-immunity with vaccines of different effectiveness, for instance, is needed. Vaccine allocation strategies should also take into account the potential ranges of VE in disease prevention (70–95%) and infection reduction (30–90%) from the first available vaccines including BNT162b2, mRNA-1273, and ChAdOx1 (AZD1222) vaccines.^{6–13}

The aim of this study was therefore to provide age-related optimisation and simulation results that can be used to design optimal vaccine programmes; including: i. achievement of HIT and, ii. if borders are open and cases of COVID-19 are introduced to the NZ community, minimisation of COVID-19 cases, hospitalisations and deaths. These include strategies to ensure maximum protection for Māori and Pasifika populations, who are at higher risk for hospitalisation and death from COVID-19.^{14,15}

Methods

We extended an age-stratified Susceptible, Exposed, Infectious, Recovered (SEIR) model¹⁶ with a presymptomatic phase to include vaccinated compartments (Supplemental Figure S1). The whole population is divided into eight 10-year age groups $G=\{0-9,10-19,20-29,\dots,60-69,70+\}$.

We assume that a vaccine has three effects: e_i is the reduction of infection in vaccinated people (i.e. susceptibility to infection), e_d is the VE for disease prevention (the default concept of VE and commonly used clinical endpoint in vaccine efficacy trials), and the third effect is reduction of infectiousness. The vaccine effect on infection reduces the susceptibility of vaccinated people by a factor e_i compared with unvaccinated people. Thus, if the susceptibility of an unimmunised person in an age group i is u_i , the susceptibility of a vaccinated person in the same age group is expected to be $u_i^v = u_i(1 - e_i)$. e_i has a direct influence on the viral transmission. Likewise, the probability of developing clinical disease in vaccinated infected cases in age group i is $\rho_i^v = \rho_i(1 - e_d)/(1 - e_i)$, where ρ_i is the probability of having clinical disease in unvaccinated infected cases. e_d is, thus, the effect of the vaccine on preventing disease in vaccinated individuals and corresponds to the reported vaccine efficacy and effectiveness.^{6–13} The effect of the vaccine on the reduction of infectiousness reduces the probability of spreading SARS-CoV-2 in vaccinated individuals. A detailed description of the model can be found in the Supplementary Appendix S1.

In addition to e_i , another effect of vaccines that contributes to the change of the effective reproduction number R_{eff} is the reduction of infectiousness in vaccinated infections.¹⁷ This parameter is dependent on the reduction of viral shedding and/or symptoms (e.g., coughing and sneezing). In our model, it is considered that the reduction of infectiousness is a result of the reduction of clinical disease in vaccinated infections and the parameter f (Supplemental Table S1). This dependency is different from considering a constant reduction of infectiousness across all age groups, where different rates of symptom reduction does not influence the reduction of infectiousness in vaccinated infections. This model enables us to model the effect of e_d on the overall transmission (R_{eff}) while analysing the vaccine effect on reducing infection (e_i).

Model assumptions

Model assumptions included: i. For open-border modelling the behaviour of New Zealanders is as observed prior to Alert level 1 (without PHSMs). The average duration from illness onset to isolation without any intervention is 7.2 days;³ ii. age group sizes are constant in the open-border modelling; iii. infected, vaccinated people, without disease, have the same spreading capability as the infected asymptomatic/paucisymptomatic cases without vaccination; iv. the effectively immunised people, against either infection or disease, stay immunised with the same protection effect for the whole simulation period if they do not get re-infected. This can be interpreted as the waning vaccination effect (in the vaccinated group) being balanced by the reinforcement of the vaccination process during the simulation period. This assumption is to separate other effects from the vaccine distribution; v. vaccines are as effective for children and teenagers (age below 16) as they are for other tested age groups; vi. Māori and Pasifika populations have the same contact matrix as the whole of NZ.¹⁸ This assumption is, however, likely to underestimate the actual contact frequencies in this population¹⁹ as Māori and Pasifika people live in larger households, have larger social networks (inter-dependent households, family, church etc), have a higher proportion of the population that are young, as well as a greater likelihood of being in high exposure risk occupations;²⁰ and vii. death rates (total rate and age-specific rates) are unchanged even when the active COVID-19 hospitalisations exceeds available NZ hospital capacity.²¹

Data

We used COVID-19 case data reported in EpiSurv²² from February 26th 2020 (when the first case was reported) to October 21st, 2020. COVID-19 hospitalisation rates for all age groups were inferred from recorded hospitalised cases in the national notifiable disease surveillance system, EpiSurv.²² We assumed that Māori and Pasifika populations have twice the hospitalisation rates estimated from EpiSurv based on previous evidence.¹⁵ We used the estimated age-stratified infection fatality rates modelled by Verity et al.²³ as the age-stratified death rates for the whole of NZ, and the rates modelled by Steyn et al.¹⁴ as the age-stratified death rates for Māori and Pasifika populations. We used the age distribution of imported cases as recorded in EpiSurv²² as the age distribution of imported cases in the model (70.6% were aged 20–59 years). The susceptibility and clinical rates of COVID-19 for different ages were calculated using data from an age-stratified model published by Davies et al.¹⁶ A list of parameters with their source is shown in Supplemental Table S1.

Strategies and scenarios

Vaccine effectiveness

We investigated vaccine scenarios that only one vaccine is used for the whole population regarding the NZ vaccine plan.⁵ We analysed varying effects of the vaccine by introducing a parameter for the effectiveness on disease prevention, e_d , and a parameter for the effectiveness on infection reduction, e_i . We looked at minimum vaccine effectiveness with different uptake levels (from 60% to 100% coverage of total population) required to achieve HIT ($R_{eff} < 1$) given the R_0 values of 2.5, 4.5, and 6.

We modelled VE (of disease prevention) in the range of 70–95%. VE of infection reduction is normally smaller than VE of disease prevention. Thus, the range of VE for infection reduction was 30% to 90% and was no greater than VE of disease prevention in all scenarios. Hereinafter, the effects of a vaccine with VE of disease prevention (e_d) and VE of infection reduction (e_i) is short-

ened to e_d/e_i % effectiveness for convenience. For instance, a vaccine with 95/70% effectiveness has 95% effectiveness for disease prevention and 70% effectiveness for infection reduction. The effectiveness of a vaccine is considered “uniform” when their effectiveness is equal across age groups, while the effectiveness is called “varied” when the vaccine effectiveness is reduced in older age groups. The current vaccination strategy in NZ focuses on two dose vaccination, rather than maximising the number of administrations of first dose. The second dose is administered at least 21 days after the first dose.⁵

Vaccine strategies with closed borders

In this study, we compared two vaccine strategies, where each could be implemented through one of the following optimisation criteria: (1) minimising the effective reproduction number or the spreading rate; and (2) minimising disease in the total high-risk population (risk for severe disease and deaths). The first strategy minimises the leading eigenvalue of the next generation matrix (i.e. R_{eff}) or the spreading rate. This strategy requires minimum requirements for vaccine effectiveness and the total uptake to achieve HIT. Therefore, it is used to analyse the minimum herd immunity requirements. The total high-risk population in the second strategy can be estimated as $\sum_i S_i d_i$, which are the age-stratified susceptible populations (S_i) weighted by their mortality rates due to COVID-19 (d_i). This strategy begins with vaccination in the oldest groups, followed by the younger groups, because older groups are known to have higher risks for both severe disease and death.^{24,25} Hereafter, two strategies are referred to as the spread-minimising/minimise R_{eff} strategy and the high-risk (group) targeting strategy respectively. A third strategy that balances between these two strategies is included in Supplemental Appendix S2.

Both strategies are assumed to be implemented with closed borders until a certain uptake level is reached, i.e. from 60 to 100% total population coverage (Figure 1). A vaccination uptake of 80–90% of the NZ population requires vaccinating individuals aged under 16 and a higher rate of vaccination than being achieved in other countries. In the United Kingdom, Israel, and Canada,²⁶ around 60% of total populations have been vaccinated with more than 95% in older age groups.

We assumed the following constraints on all vaccine strategies: i. each age group is vaccinated at least 20%, except for the 70+ year olds with minimum 80% vaccine coverage. ii. the maximum coverage for each age group is 90% for variants with lower R_0 values (2–3.5) and 100% for variants with higher R_0 values (4.5–6). The range of the higher R_0 values corresponds to the early estimates of R_0 values for the variants of concern (4.5–6).

To compare these strategies, we ran two-year simulations of two vaccine strategies with open borders, where a continuous vaccination process is assumed to mitigate any potential waning effect of the vaccine (Figure 1). We assumed there is a constant ten daily imported cases that become part of the community, which are equivalent to a total of 7,300 imported cases. As part of a sensitivity analysis, we also modelled on 100 daily imported cases (73,000 total). Imported cases are assumed to be unvaccinated. Comparison criteria include total COVID-19 deaths, total community cases, peak active cases, total hospitalisations, and peak active hospitalised cases (peak hospitalisations). The measures relating to hospitalisations and deaths include a predicted 444 total hospitalised and 84 deaths from 7,300 imported cases (Supplemental Appendix S2). As vaccination has not been approved for 0–15 year olds in New Zealand,⁵ we carried out a sensitivity analysis where uptake was 0% for 0–9 year olds and the vaccine coverage of 10–19 year olds is assumed to have a maximum level of 35% as the subgroup of 16–19 year olds contribute nearly 40% to the group of

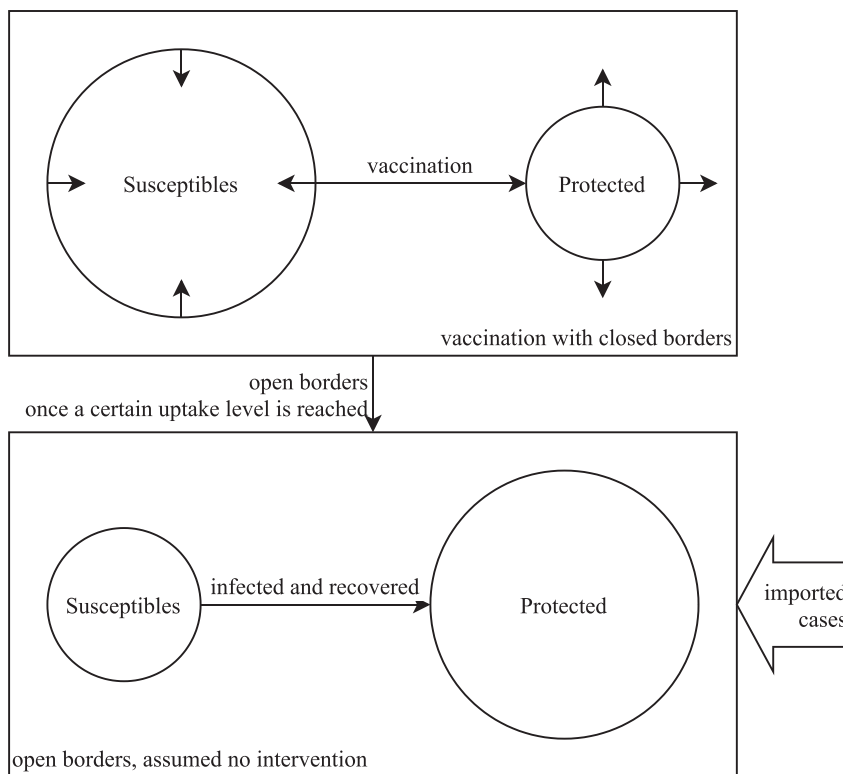


Figure 1. Pre-transmission vaccination process. Note: A level of uptake (60–100% total population) has been reached before opening borders.

10–19 year olds.²⁷ We also limited our analysis to 0–11 year olds (as clinical trials have yet to release findings). For this analysis, the vaccine coverage of 10–19 year olds is therefore assumed to have a maximum level of 70% as the subgroup of 12–19 year olds contribute about 79% to the group of 10–19 year olds.

Ethics and permissions

The study protocol was approved by the Health and Disability Ethics Committee, New Zealand, under the protocol number 20/NTB/156.

Role of the funding source

The sponsors of the study had no role in study design, data collection, data analysis, data interpretation, or the writing of this report.

Results

Minimum herd immunity requirements

Figure 2 (A-B) and Figure 4 (A-D) show minimum herd immunity requirements for two vaccine strategies at multiple uptake levels given the R_0 value is in the range of 4.5–6 and 2–3.5 where there is a minimum 80% vaccine uptake for high risk groups. Reaching the HIT with a vaccine of 90/80% effectiveness requires at least 86.5% total population uptake for $R_0=4.5$ and 98.1% uptake for $R_0=6$ with high vaccination coverage for 30–49-year-olds, i.e. the spread-minimising strategy. With the same vaccine and the high-risk targeting strategy, reaching HIT requires 92% and 99.2% total population uptake levels for $R_0=4.5$ and 6 respectively. With 90% total population coverage with a vaccine of 90% VE for disease prevention, a minimum 76% VE of infection reduction for $R_0=4.5$ and 86% VE of infection reduction for $R_0=6$ is required (using the

spread-minimising strategy). For 80% population vaccine coverage, a VE of 87% for infection reduction is needed. For all VE scenarios (Figures 2, 4, Supplemental Appendix S3), the spread-minimising strategy has the minimum requirements of VE for HIT among vaccine strategies given the same uptake levels although it may not be optimal for protecting the whole population from the risk of hospitalisations and deaths. Vaccinating the age groups 30–39 and 40–49 can minimise the initial effective reproduction numbers (given a limited number of doses), while 60+ and 0–9 are the age groups that contribute the least to the reduction of the effective reproduction number and the achievement of HIT.

Open border modelling results

The differences in vaccine allocation of the investigated strategies can be found in Figure 3. The spread-minimising strategy (minimise R_{eff}) in this figure has enabled HIT at 80% total population coverage. Probable scenarios of VE and vaccine uptake levels in a two-year simulation of the model can be found in Table 1 (open borders, ten cases daily introduced to the community and $R_0=4.5$). Further vaccine scenarios for the whole of NZ can be found in Supplemental Tables S2–8.

The spread-minimising strategy (i.e. minimise R_{eff}) resulted in the smallest peak and total community cases in all scenarios (assuming the vaccine can reduce infection $e_t > 0$). The strategy which targeted high-risk groups yielded the fewest hospitalisations (active or total) and total deaths in the majority of modelled scenarios (Table 1). For the high-risk group targeting strategy, a high total vaccine uptake is required that is enough to also cover young adults to achieve better outcomes in general. For instance, in a scenario with $R_0=4.5$ and a vaccine having a VE of 90/70% and 90% population uptake, the high-risk group targeting strategy was forecasted to have the lowest number of deaths and total hospitalisations, i.e. 2,880 vs 5,810 fatalities and 30,100 vs 39,700 hospitalisations (peak active hospitalisations 1,480 vs. 1,310) respectively,

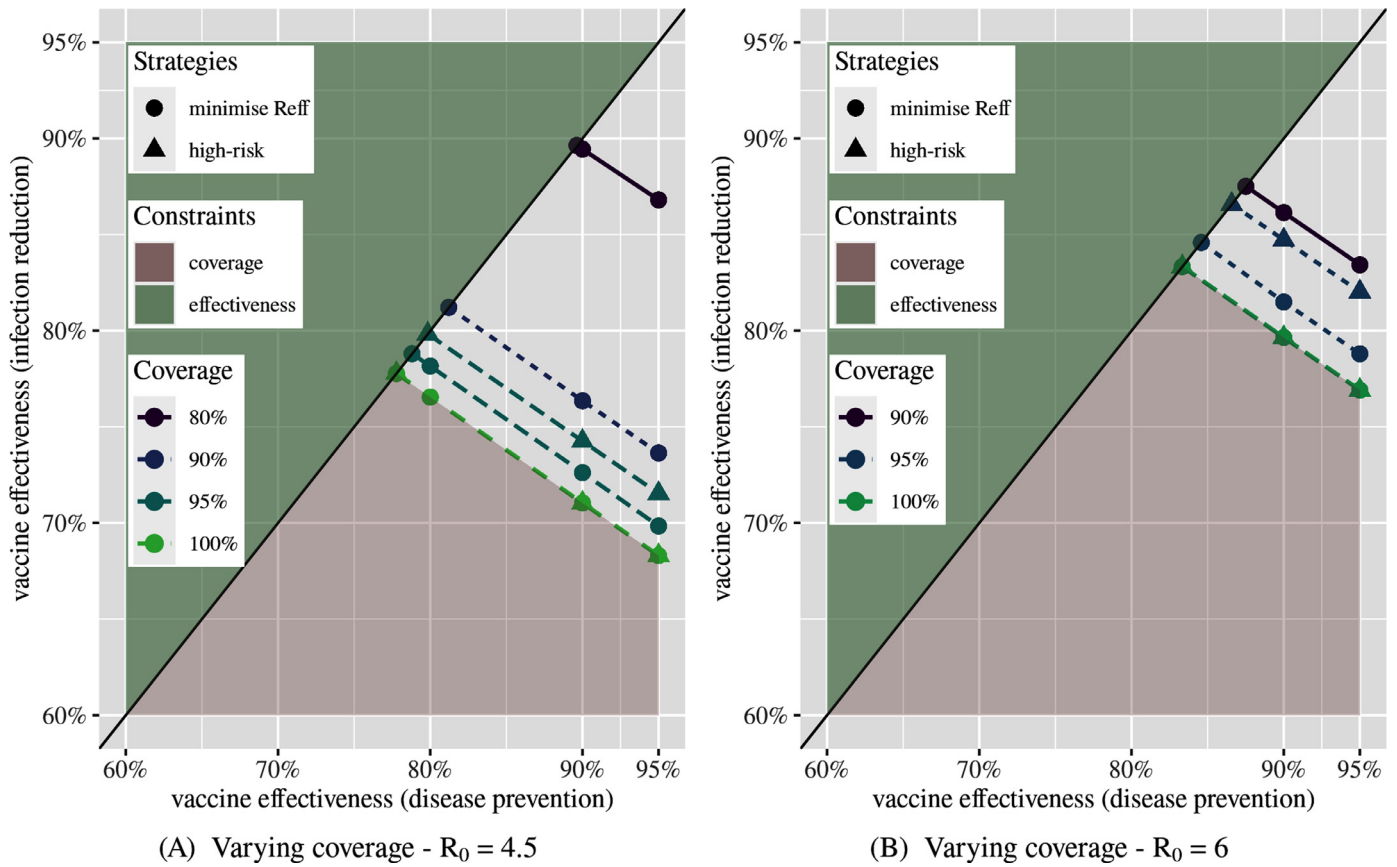


Figure 2. Vaccine effectiveness and New Zealand population vaccine uptake requirements for herd immunity threshold. Note: The minimal vaccine effectiveness on infection reduction and disease prevention for the herd immunity threshold at multiple vaccine uptake levels: (A) $R_0=4.5$ and (B) $R_0=6$. The spread-minimising strategy (i.e. minimise R_{eff}) offers lower requirements of vaccine effectiveness (on both effects) than the high-risk targeting strategy given the same uptake levels. Both effects are considered equal across age groups in this analysis. As the vaccine effectiveness on infection reduction is expected to be not greater than the vaccine effectiveness on disease prevention, all herd immunity lines are limited to the bottom half of the plot (divided by the black line).

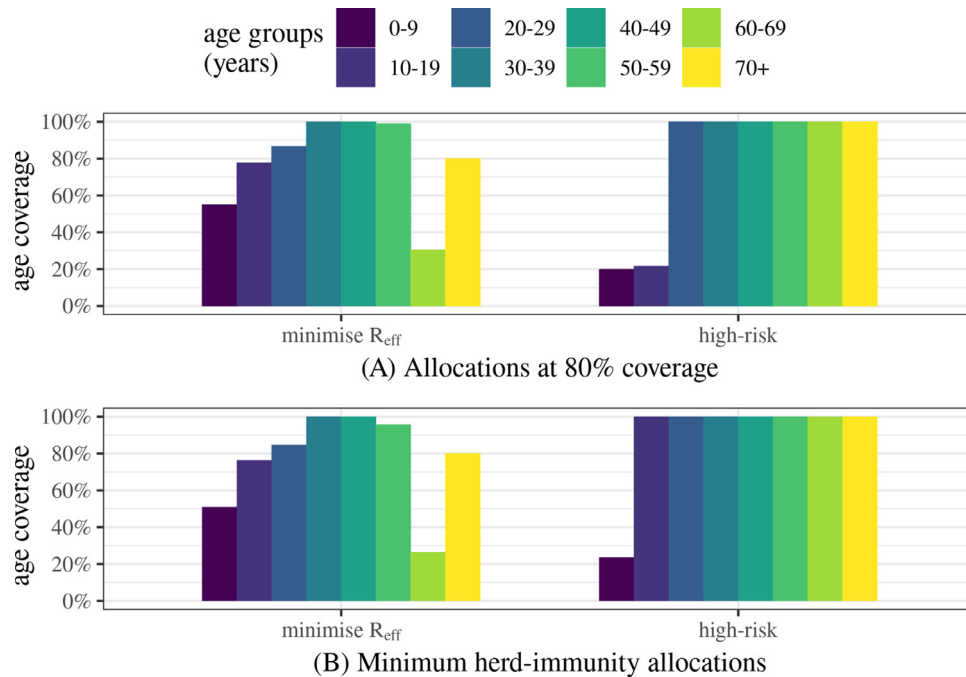


Figure 3. Age-stratified allocations for two strategies with a vaccine of 95/90% uniform effectiveness and 80% coverage (A), and their minimum herd-immunity allocations ($R_0=4.5$) (B). Note: Illustration of vaccine allocations for two strategies (i.e. minimising R_{eff} and prioritising high-risk groups). A - shows 80% coverage with 95% (uniform) effectiveness on disease prevention and 90% (uniform) of infection reduction. B - shows the minimal age-stratified allocations required for HIT by the corresponding strategies. The high-risk targeting strategy requires more than 80% coverage (~90.5%) to achieve HIT, while the spread-minimising strategy needs less vaccine uptake for HIT (78.2% total coverage). For $R_0=6.0$ near complete coverage for all age groups is required to achieve the herd-immunity threshold.

Table 1

Comparison of cases, hospitalisations, and deaths in New Zealand population ($R_0=4.5$) – 10 imported cases per day with open borders or 7,300 total imported cases with two-year open borders

Vaccine scenarios (e_d/e_i & uptake)	Vaccine strategies	Peak active cases	Total community cases	Peak hosps.	Total hosps.	Total deaths
95/90% uniform – 100% coverage	n/a	133	5,010	7	587	64
95/90% uniform 90% coverage	minimise R_{eff} high-risk hybrid	217 1,380 270	12,100 80,400 16,800	15 34 10	1,170 1,950 814	173 145 77
95/90% uniform 80% coverage	minimise R_{eff} high-risk hybrid	1,090 66,700 1,950	75,700 821,000 127,000	78 1,530 123	5,210 17,400 7,490	863 947 1,150
95/90% uniform 70% coverage	minimise R_{eff} high-risk	46,500 163,000	974,000 1,500,000	2,910 3,640	55,200 31,700	8,140 1,710
95/80% uniform – 100% coverage	n/a	272	18,100	9	708	76
95/80% uniform 90% coverage	minimise R_{eff} high-risk hybrid	584 7,050 803	43,500 318,000 60,100	29 127 28	2,120 5,130 2,010	333 383 261
95/80% uniform 80% coverage	minimise R_{eff} high-risk	16,600 110,000	673,000 1,360,000	908 2,050	32,200 22,800	5,440 1,400
95/80% uniform 70% coverage	minimise R_{eff} high-risk	122,000 240,000	1,790,000 2,140,000	5,840 4,480	75,400 36,900	11,100 2,190
95/70% uniform – 100% coverage	n/a	1,560	119,000	24	1,630	168
95/70% uniform 90% coverage	minimise R_{eff} high-risk	14,600 42,600	734,000 1,180,000	459 575	19,600 13,700	3,210 1,130
95/70% uniform 80% coverage	minimise R_{eff} high-risk	91,900 188,000	1,820,000 2,200,000	3,560 2,800	60,100 28,900	9,910 1,960
95/70% uniform 70% coverage	minimise R_{eff} high-risk	236,000 341,000	2,650,000 2,830,000	8,970 5,330	87,900 40,400	12,900 2,530
95/60% uniform – 100% coverage	n/a	59,500	1,590,000	561	12,700	1,330
95/60% uniform 90% coverage	minimise R_{eff} high-risk	119,000 146,000	2,190,000 2,340,000	2,500 1,540	39,300 21,200	6,260 1,870
95/60% uniform 80% coverage	minimise R_{eff} high-risk	221,000 303,000	2,800,000 2,990,000	6,670 3,670	72,400 32,300	11,900 2,300
95/60% uniform 70% coverage	minimise R_{eff} high-risk	370,000 455,000	3,330,000 3,390,000	11,700 6,060	92,600 41,600	13,700 2,670
90/80% uniform – 100% coverage	n/a	337	23,200	15	1,140	120
90/80% uniform 90% coverage	minimise R_{eff} high-risk hybrid	918 11,100 1,470	67,500 439,000 105,000	54 324 71	3,750 11,400 4,640	559 1,030 609
90/80% uniform 80% coverage	minimise R_{eff} high-risk	29,200 122,000	928,000 1,500,000	1,780 3,430	50,100 38,800	7,890 3,170
90/80% uniform 70% coverage	minimise R_{eff} high-risk	145,000 259,000	1,960,000 2,260,000	7,770 7,020	94,400 58,600	13,200 4,590
90/70% uniform – 100% coverage	n/a	5,170	329,000	130	7,060	720
90/70% uniform 90% coverage	minimise R_{eff} high-risk	34,000 63,100	1,200,000 1,490,000	1,310 1,480	39,700 30,100	5,810 2,880
90/70% uniform 80% coverage	minimise R_{eff} high-risk	121,000 212,000	2,080,000 2,390,000	5,400 4,910	80,600 49,900	12,200 4,320
90/70% uniform 70% coverage	minimise R_{eff} high-risk	267,000 366,000	2,810,000 2,950,000	11,400 8,400	107,000 63,800	15,000 5,220
90/60% uniform – 100% coverage	n/a	93,700	1,940,000	1,740	30,600	3,260
90/60% uniform 90% coverage	minimise R_{eff} high-risk	157,000 183,000	2,460,000 2,590,000	4,430 3,400	59,900 41,700	8,590 4,150
90/60% uniform 80% coverage	minimise R_{eff} high-risk	262,000 335,000	3,000,000 3,140,000	8,900 6,420	89,400 54,400	13,300 4,860
90/60% uniform 70% coverage	minimise R_{eff} high-risk	404,000 483,000	3,440,000 3,490,000	14,700 9,460	113,000 64,400	15,800 5,380
80/70% uniform – 100% coverage	n/a	41,800	1,310,000	2,000	55,000	5,780
80/70% uniform 90% coverage	minimise R_{eff} high-risk	95,100 122,000	1,930,000 2,090,000	5,170 5,340	93,500 81,600	11,900 8,510
80/70% uniform 80% coverage	minimise R_{eff} high-risk	190,000 268,000	2,560,000 2,770,000	10,800 11,000	131,000 105,000	17,500 10,600
80/70% uniform 70% coverage	minimise R_{eff} high-risk	333,000 419,000	3,100,000 3,190,000	18,000 16,200	156,000 119,000	20,000 11,800
80/60% uniform – 100% coverage	n/a	175,000	2,510,000	6,290	79,400	8,690
80/60% uniform 90% coverage	minimise R_{eff} high-risk	244,000 265,000	2,930,000 3,000,000	9,990 9,130	107,000 92,600	13,600 9,940
80/60% uniform 80% coverage	minimise R_{eff} high-risk	340,000 406,000	3,300,000 3,420,000	15,500 13,600	138,000 106,000	18,600 10,900
80/60% uniform 70% coverage	minimise R_{eff} high-risk	475,000 543,000	3,650,000 3,680,000	21,500 17,600	155,000 115,000	20,200 11,600
70/60% uniform – 100% coverage	n/a	266,000	2,940,000	13,900	141,000	15,800
70/60% uniform 90% coverage	minimise R_{eff} high-risk	336,000 354,000	3,280,000 3,330,000	18,300 17,600	165,000 154,000	20,100 17,100
70/60% uniform 80% coverage	minimise R_{eff} high-risk	426,000 483,000	3,570,000 3,660,000	23,700 22,900	187,000 166,000	23,600 18,100

(continued on next page)

Table 1 (continued)

70/50% uniform – 100% coverage	n/a	421,000	3,520,000	17,500	136,000	15,600
70/50% uniform	minimise R_{eff}	491,000	3,780,000	21,400	154,000	19,000
90% coverage	high-risk	503,000	3,800,000	20,200	144,000	16,300
90/80%: age 50+70/60%: younger 80% coverage	dual vaccine	175,000	2,180,000	8,410	95,300	12,000

Peak active and total community cases do not include imported cases. All measures related to hospitalisations and deaths (in all scenarios) include imported cases, which are equivalent to the expectations of 444 total hospitalisations and 49.6 total deaths. Note: Forecasts for a two-year simulation. e_d is VE of disease prevention. e_i is VE of infection reduction. The total community cases include vaccinated cases, who are less likely to develop symptoms, need hospitalisation or die than unvaccinated individuals. A scenario of “95/90% uniform, 80% coverage” means that the vaccine has uniform effects across age groups with 95% disease prevention and 90% infection reduction, and the uptake is 80% coverage of total population. HIT is not achievable in the third and fourth scenarios, where the vaccine has poor effectiveness on infection reduction. The last scenario has 80% vaccine uptake when two vaccines are available. The “dual vaccines” strategy reused the vaccine allocation from the high-risk (group) targeting strategy. This dual strategy allocated a vaccine with lower effectiveness 70/60% for the five younger age groups and the 90/80% vaccine for the three oldest groups (aged 50 and over). Targeted vaccine strategies: (minimise R_{eff}) Targeting of younger (socialised) age groups to minimise R_{eff} ; (high-risk) Groups susceptible to hospitalisation and death. Results are rounded to the third significant number. The lowest values that are at least 10% lower than other corresponding numbers of the same scenarios are in bold.

and more community cases than the spread-minimising strategy, i.e. a total of 1,490,000 vs. 1,200,000 cases (peak active community cases 63,100 vs. 34,000). Where the R_0 value is 6 and 90% total population uptake with the same vaccine, modelling the high-risk group targeting strategy resulted in lower hospitalisations and deaths but higher cases than the spread-minimising strategy, i.e. 6,100 vs. 11,700 deaths, 59,600 vs. 82,600 hospitalisations (peak active 5,960 vs. 7,320), 2,860,000 vs. 2,750,000 cases (peak active community cases 253,000 vs. 213,000).

A dual vaccine approach has been investigated where the vaccine distribution follows the high-risk targeting strategy (Table 1). All groups aged 50 and over are allocated with a vaccine of 90/80% effectiveness and the rest are allocated with a vaccine of lower 70/50% effectiveness. The outcomes of this scenario are 2,180,000 cases (peak active 175,000 cases), 95,300 hospitalisations (peak active 8,410 in hospital), and total 12,000 fatalities. These numbers are in between the corresponding outcomes of two scenarios using either one of the two vaccines.

We have modelled vaccine scenarios of immunosenescence with a 50% reduction in effectiveness (for both disease prevention and infection reduction) in people aged 60 and over (Supplemental Table S9). We also analysed the sensitivity of the results on the assumed average daily imported cases and the synthetic contact matrix¹⁸ in Supplemental Appendix S4. Customised vaccine strategies and open-border modelling results for Māori and Pasifika populations are provided in Supplemental Appendix S5.

Vaccination excluding youngest age-groups

Where vaccination is not allocated to the 0–15 year olds⁵ or the 0–11 year olds, the maximum attainable total population vaccine coverage is 79.8% or 84.9%. At a high R_0 value of 4.5 or higher, these maximum total coverage levels are not enough to achieve HIT. Therefore, opening borders without vaccinating the under-12 group or the under-16 group were predicted to result in a large number of cases, hospitalisations, and deaths (Table 2 and Supplemental Table S2). For instance, where 0–11 year olds are not vaccinated and $R_0=4.5$ (Table 2), the high-risk targeting strategy with a high uptake level 80% (over the maximum 84.9%) and a vaccine of 90/80% effectiveness was predicted to have lower deaths and total hospitalisations and more community cases, i.e. 3,120 vs. 5,850 deaths, 37,700 vs. 44,100 hospitalisations (peak 2,980 vs 2,630), 1,480,000 vs 1,180,000 cases (peak 107,000 vs 62,700).

At a lower R_0 value of 2.5 (Figure 4 and Supplemental Figures S5–6), the achievement of HIT will require a minimum VE against infection of 61% for excluding 0–15 year olds and 73% for excluding 0–11 year olds with the limits of 76.4% and 71.8% respectively (maximum 90% coverage for each age group). The open border modelling outcomes have higher numbers of cases, hospitali-

sations, and deaths in almost all scenarios and vaccine strategies compared with vaccinating all age groups.

Discussion

Reaching HIT will prevent widespread community outbreaks and, as a result, vulnerable populations will have a greater chance of protection from severe disease. A long-term lockdown may only postpone future outbreaks if a high level of immunity (by vaccination or natural immunity) is not targeted. Achieving HIT through vaccination in New Zealand while borders are closed will require an effective vaccine that can reduce infection, and high national vaccine uptake. Achievement of HIT without vaccinating the youngest age groups will require a vaccine with higher VE against infection. In an open border scenario with the relaxation of PHSMs and a highly effective vaccine for both disease prevention and infection reduction, targeting high-risk groups (including Māori and Pasifika) and achieving a high national uptake level, e.g. 80%, will result in a relatively low number of forecasted COVID-19 hospitalisations and deaths by international comparisons.²⁸ Where the vaccine has lower VE for infection reduction, more COVID-19 cases, hospitalisations and deaths are likely.

A strategy to achieve HIT will ensure limited community transmission (e.g. sporadic outbreaks) once borders are opened but would require a vaccine with a minimum 87% VE for infection reduction (where $R_0=4.5$) and a high vaccine coverage rate of 80% total population. This estimated VE for infection reduction is higher than the 85% effectiveness for preventing infections that was predicted to result in a reproduction number of 1.58 in the UK. This study did not however account for further reduced viral shedding from vaccinated individuals, reducing onward transmission.²⁸

Although, HIT is potentially possible e.g. with recent evidence of the BNT162b2 vaccine's effect against infection,²⁹ it is also possible that emerging effectiveness challenges against new virus variants will necessitate a shift in focus away from herd immunity strategies to protection of at-risk individuals against severe disease.³⁰ Although the range of estimated VE used in this study are plausible, in particular for the mRNA vaccines licensed in NZ,¹¹ the lower bounds of VE may need to be extended in the presence of variants of concern.³¹

Comparisons of our forecast peaks (with 80% uptake, and 95% VE for disease and 70% for infection) with other countries who had widespread community transmission during the first waves of disease (with no available vaccination) can be made. Scotland has a broadly comparable population size but higher population density (e.g. Scotland, UK, 5.4m vs. 5.1m population, 19.0/km² vs. 67.2/km²). Variants of concern with high R_0 values such as Alpha³² and Delta variants,³³ were dominant in Scotland in Spring 2021. In an open border scenario, our NZ model for $R_0=4.5$, where a

Table 2
Comparison of cases, hospitalisations and deaths when vaccination is not allocated to the 0–11 year olds ($R_0=4.5$) – 10 imported cases per day with two-year open borders

Vaccine scenarios (e_d/e_i , uptake, & R_0)	Vaccine strategies	Peak active cases	Total community cases	Peak hosps.	Total hosps.	Total deaths
95/90% uniform – 84.9% coverage	n/a	17,900	413,000	388	8,310	513
95/90% uniform	minimise R_{eff}	23,400	511,000	918	18,300	2,500
80% coverage	high-risk	50,600	783,000	1,140	16,100	909
95/90% uniform	minimise R_{eff}	64,100	1,050,000	3,510	52,400	8,070
70% coverage	high-risk	157,000	1,490,000	3,490	31,100	1,690
95/90% uniform	minimise R_{eff}	179,000	1,860,000	10,000	95,900	12,500
60% coverage	high-risk	310,000	2,180,000	7,860	53,800	2,680
95/90% uniform	minimise R_{eff}	361,000	2,570,000	19,500	133,000	15,500
50% coverage	high-risk	508,000	2,790,000	15,300	84,800	3,980
95/80% uniform – 84.9% coverage	n/a	39,000	826,000	695	13,100	894
95/80% uniform	minimise R_{eff}	51,000	1,010,000	1,690	29,300	4,110
80% coverage	high-risk	93,500	1,330,000	1,710	21,700	1,370
95/80% uniform	minimise R_{eff}	128,000	1,780,000	5,700	70,000	10,600
70% coverage	high-risk	232,000	2,130,000	4,290	36,400	2,150
95/80% uniform	minimise R_{eff}	279,000	2,560,000	13,100	108,000	14,100
60% coverage	high-risk	403,000	2,780,000	8,750	57,200	3,010
95/80% uniform	minimise R_{eff}	466,000	3,150,000	22,000	139,000	16,400
50% coverage	high-risk	604,000	3,300,000	16,000	85,700	4,080
95/70% uniform – 84.9% coverage	n/a	99,200	1,730,000	1,390	21,000	1,590
95/70% uniform	minimise R_{eff}	122,000	1,960,000	3,200	44,100	6,300
80% coverage	high-risk	174,000	2,180,000	2,540	28,100	1,950
95/70% uniform	minimise R_{eff}	233,000	2,630,000	8,400	82,700	12,500
70% coverage	high-risk	331,000	2,830,000	5,130	40,100	2,510
95/70% uniform	minimise R_{eff}	399,000	3,220,000	15,700	114,000	15,000
60% coverage	high-risk	506,000	3,320,000	9,500	58,500	3,150
95/70% uniform	minimise R_{eff}	576,000	3,640,000	24,100	141,000	16,800
50% coverage	high-risk	698,000	3,720,000	16,600	85,200	4,030
90/80% uniform – 84.9% coverage	n/a	47,900	973,000	1,360	24,700	2,140
90/80% uniform	minimise R_{eff}	62,700	1,180,000	2,630	44,100	5,850
80% coverage	high-risk	107,000	1,480,000	2,980	37,700	3,120
90/80% uniform	minimise R_{eff}	148,000	1,950,000	7,550	89,200	12,800
70% coverage	high-risk	250,000	2,250,000	6,750	58,000	4,580
90/80% uniform	minimise R_{eff}	303,000	2,680,000	15,700	128,000	16,200
60% coverage	high-risk	422,000	2,860,000	12,200	81,700	5,930
90/70% uniform – 84.9% coverage	n/a	123,000	1,980,000	2,860	40,300	3,690
90/70% uniform	minimise R_{eff}	148,000	2,190,000	5,020	64,900	8,660
80% coverage	high-risk	199,000	2,380,000	4,580	49,200	4,310
90/70% uniform	minimise R_{eff}	262,000	2,800,000	10,900	104,000	14,700
70% coverage	high-risk	356,000	2,960,000	8,140	63,500	5,220
90/70% uniform	minimise R_{eff}	426,000	3,320,000	18,700	134,000	17,100
60% coverage	high-risk	529,000	3,400,000	13,200	82,700	6,130
80/70% uniform – 84.9% coverage	n/a	184,000	2,460,000	7,790	93,900	9,670
80/70% uniform	minimise R_{eff}	213,000	2,640,000	10,500	118,000	14,600
80% coverage	high-risk	258,000	2,770,000	10,600	104,000	10,600
80/70% uniform	minimise R_{eff}	327,000	3,100,000	17,300	152,000	19,700
70% coverage	high-risk	411,000	3,210,000	15,900	120,000	11,800
80/70% uniform	minimise R_{eff}	483,000	3,510,000	25,600	178,000	21,800
60% coverage	high-risk	576,000	3,560,000	22,000	137,000	13,000
80/60% uniform – 84.9% coverage	n/a	328,000	3,240,000	11,100	99,500	10,500
80/60% uniform	minimise R_{eff}	358,000	3,360,000	14,400	124,000	15,500
80% coverage	high-risk	398,000	3,430,000	13,200	106,000	11,000
80/60% uniform	minimise R_{eff}	468,000	3,660,000	20,700	152,000	20,100
70% coverage	high-risk	537,000	3,710,000	17,400	116,000	11,600
80/60% uniform	minimise R_{eff}	610,000	3,920,000	27,900	173,000	21,600
60% coverage	high-risk	683,000	3,930,000	22,500	130,000	12,300
70/50% uniform – 84.9% coverage	n/a	555,000	3,920,000	21,900	148,000	16,700
70/50% uniform	minimise R_{eff}	671,000	4,160,000	31,200	189,000	24,300
70% coverage	high-risk	717,000	4,160,000	27,500	159,000	17,400

Note: NZ's vaccination plan has not included vaccinating 0–11 year olds.⁵ The total population coverage is therefore no more than 84.9% (other age groups have a maximum coverage of 100%).²⁷ At the maximum total coverage (84.9%), both vaccine strategies become identical.

vaccine of 90/80% effectiveness is not allowed for individuals aged under 16, has estimated a peak of 355 new daily hospitalisations (3,090 peak active hospitalised cases) vs. 92 peak daily hospitalisations found during the ongoing wave in Scotland (from June until July 2021), and a higher peak of daily cases 14,800 (including asymptomatic cases, 110,000 peak active cases) vs. 3,930 found in Scotland with 64.7% two-dose vaccine coverage and 88.1% first-dose vaccine coverage of all people aged 18 and over.³⁴ The numbers hospitalisations and deaths for NZ will be higher as this includes 7,300 unvaccinated imported cases.

Several studies have addressed COVID-19 vaccination strategies. Bubar et al.³⁵ compared five vaccine strategies that allocate vaccine doses on 'under 20', 'adults 20–49', 'adults 20+', 'adults 60+', and 'all ages' in terms of the reduction of deaths and infections. This study focused on the initial phase of vaccination, modelling a total vaccine uptake of no more than 50% of the population and applying non-pharmaceutical interventions to reduce the spreading rate. Moore et al. predicted 96,700 deaths (51,800–173,200) if interventions are removed after vaccination with a vaccine that could prevent 85% infections.²⁸ Sandmann et al. used an age-structured

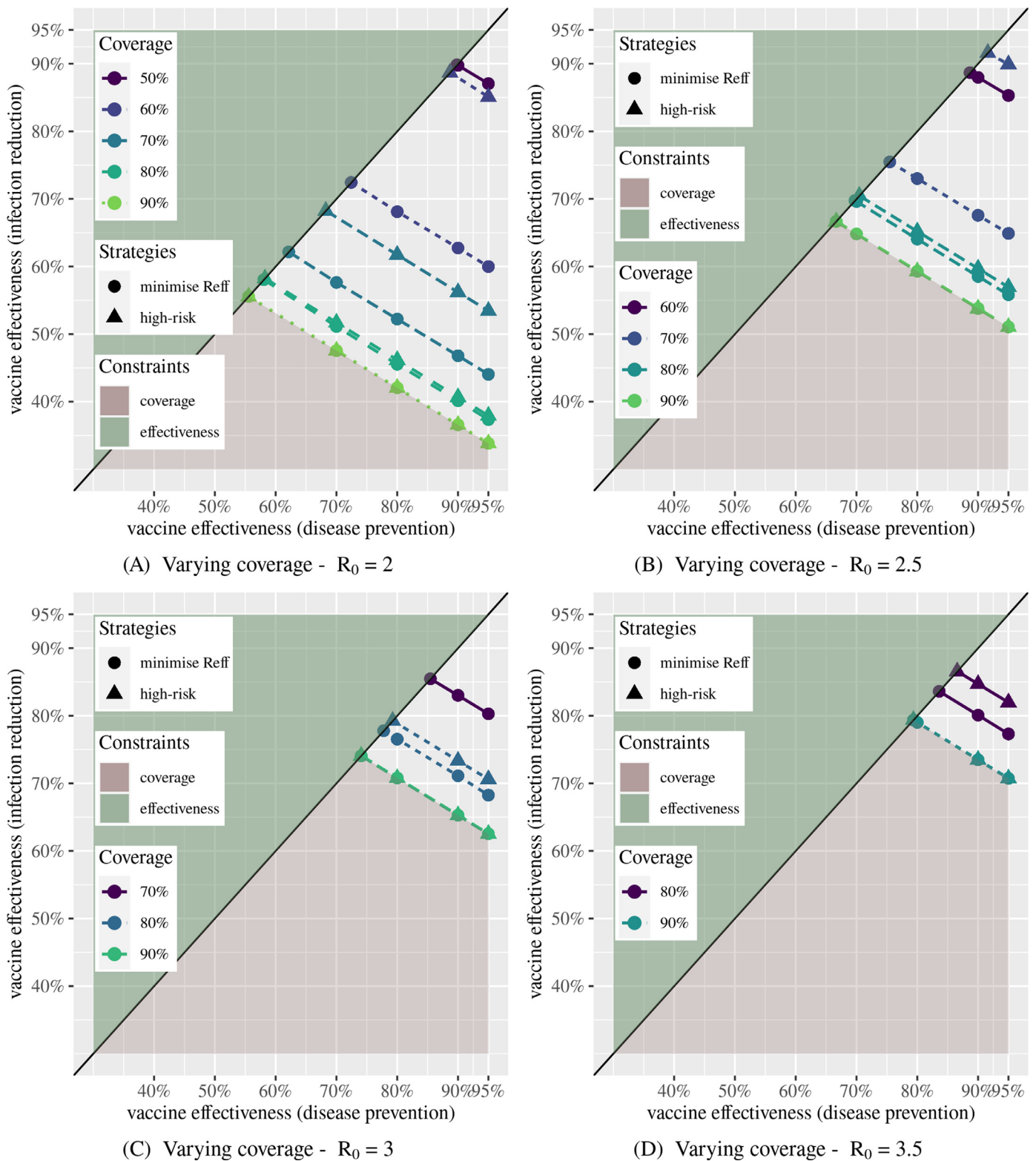


Figure 4. Vaccine effectiveness and New Zealand population vaccine uptake requirements for the herd immunity threshold at lower R_0 values. Note: The minimal vaccine effectiveness on infection reduction and disease prevention for HIT at multiple vaccine uptake levels: (A) $R_0=2$; (B) $R_0=2.5$; (C) $R_0=3$; and (D) $R_0=3.5$. The maximum vaccine coverage in each age group is 90%.

transmission and economic model to estimate the economic impact of vaccination for the UK in a ten-year simulation.³⁶ This study suggested that vaccination could add substantial health and economic value and population-wide physical distancing might not be justifiable.

Compared with other models used for vaccination studies, the SEIR model used in this study provides a model with fewer assumptions for the same disease dynamics. By grouping individuals of the same disease phase into a compartment, this SEIR model approach only requires transitions among phases instead of requiring

numerous rules representing all the disease phases that are used in agent-based models. Although agent-based models have been used to apply a number of assumptions which are useful for understanding the effect of multiple public health interventions, they have limitations due to being computationally demanding.³⁷ For instance, agent-based models do not integrate age groups, but use averages for the whole population, whereas we know that vaccine distribution across age groups is unlikely to be uniform.³⁸ The required uptake levels for HIT are subject to an estimated basic reproduction number R_0 of COVID-19 in NZ, national priorities and consideration to protect health and social care workers and the most clinically susceptible groups. While the R_0 value for NZ has not been reliably estimated, its actual value is also probably dependent on seasonality.^{39,40} Moreover, R_0 is likely to increase with the emergence of the new virus strains.^{41,42} To consider possible increases in R_0 , a strength of this study is that we also investigated herd immunity requirements for higher R_0 values (4.5 and 6). These R_0 values could be the potential reproduction number of new variants. However, this study does not include changing R_0 values over time (with the introduction of new variants of concern). Rather R_0 values are fixed for the two-year period. Another strength of this work is that the model can be calibrated when more accurate parameter values are available. There is uncertainty with new variants of concern. Model parameters, such as R_0 , latent/infectious periods, and age-structured mortality rates may therefore vary. However, further parameters can be added to the model once evidence of new parameters emerges.

The safe opening of borders in NZ will be dependent on a vaccine that has high effectiveness against both COVID-19 disease and viral transmission. A limitation of our study is that there is still some uncertainty regarding the vaccine effectiveness against transmission. Therefore, modelling strategies and scenarios and forecasting their potential impact on the NZ population with more accurate assumptions (including infection reduction and waning vaccine immunity) needs further investigation. A further limitation is uncertainty around the potential number of imported cases in particular if travel is restricted from regions with high numbers of cases. There is also uncertainty regarding immunosenescence and our assumption of uniform effectiveness across age groups may not hold, although we have modelled vaccine scenarios with a reduction in effectiveness (for both disease prevention and infection reduction) in people aged 60 and over. The targeting of high-risk groups (in an open border scenario), in this case, may not yield the lower total deaths in many scenarios as the disease prevention effect is now lower. This is in contrast to another modelling study which found that, in the event of low effectiveness amongst older adults and no more than 50% uptake level, the advantage of prioritising all adults or adults 20–49 vs. adults 60+ was small.³⁵

This work provides data on a range of vaccine scenarios and strategies to inform NZ vaccine planning.⁵ While research to estimate vaccine effectiveness for reducing severe outcomes and infection is underway, a 70% VE against infection is predicted to be the minimum required to achieve HIT for NZ with an $R_0=4.5$ and 95% total vaccine coverage. As NZ's vaccination plan has not yet included those aged 0–15 years for vaccination,⁵ achievement of HIT without vaccinating this group may be impossible, especially if the imported cases are Alpha or Delta variants of concern.³³ Thus, to help reduce cases, hospitalisations, and deaths, other public health interventions will be required to manage the public health response.

Contributors

CRS, MA, BN, JdL, JG, SJ, MB, WS, AS, NF, DM and DW conceived this study. All commented on the paper, oversaw the analysis and edited the final manuscript. TN, MA, BN and CS led the writing

of the paper. TN, RD, MA cleaned and analysed the data. All authors contributed to the study design. All authors contributed to drafting the paper and revised the manuscript for important intellectual content. All authors gave final approval of the version to be published.

Declaration of interests

DM is a member of COVID-19 Vaccine Strategy Taskforce, NZ Government; COVID-19 Vaccine Strategy Scientific and Technical Advisory Group, NZ Government; Advisory Group, Vaccine Alliance Aotearoa New Zealand (VAANZ); COVID-19 Expert Advisory Network, NZ Ministry of Health; and an independent member of the Clinical Trials Steering Committee, University of Oxford COVID-19 Vaccine trials. CRS received COVID-19 related grant funding from the NZ Health Research Council, NZ Ministry of Business, Innovation and Employment, Chief Scientist Office Scotland, UK National Institute for Health Research and UK Medical Research Council. JdL, NF and TN received COVID-19 related grant funding from the NZ Health Research Council, and NZ Ministry of Business, Innovation and Employment. BN and DW received COVID-19 related grant funding from the NZ Health Research Council. DW received grant funding from the Ministry of Business, Innovation and Employment as part of the Te Pūnaha Matatini COVID-19 Modelling Programme. SJ received COVID-19 related grant funding from the NZ Ministry of Business, Innovation and Employment. SJ and JdL's institute (ESR) received funding from the New Zealand Ministry of Health to undertake national infectious disease surveillance.

Declaration of Competing Interest

The authors declare no conflict of interest.

Acknowledgments

This work was funded by the New Zealand Health Research Council (20/1018). We like to thank Te Pūnaha Matatini for providing an independent review of this work.

Data sharing

All code used in this study will be made publicly available. The data used in this study are sensitive and will not be made publicly available.

Supplementary materials

Supplementary material associated with this article can be found, in the online version, at [doi:10.1016/j.lanwpc.2021.100256](https://doi.org/10.1016/j.lanwpc.2021.100256).

References

- [1] World Health Organization. Coronavirus Disease (COVID-19) Dashboard. 2020. <https://covid19.who.int/> (accessed 11 July 2021).
- [2] Tom S, Gregorius S, Chris M. Economic impacts of COVID-19 containment measures: Reserve Bank of New Zealand, 2020.
- [3] Jefferies S, French N, Gilkison C, Graham G, Hope V, Marshall J, et al. COVID-19 in New Zealand and the impact of the national response: a descriptive epidemiological study. *Lancet Public Health* 2020;5(11):e612–e23.
- [4] Baker MG, Wilson N, Anglemeyer A. Successful Elimination of Covid-19 Transmission in New Zealand. *N Engl J Med* 2020;383(8):e56.
- [5] Ministry of Health New Zealand. COVID-19: Vaccines. 2021. <https://www.health.govt.nz/our-work/diseases-and-conditions/covid-19-novel-coronavirus/covid-19-vaccines> (accessed 27 April 2021).
- [6] Polack FP, Thomas SJ, Kitchin N, Absalon J, Gurtman A, Lockhart S, et al. Safety and Efficacy of the BNT162b2 mRNA Covid-19 Vaccine. *N Engl J Med* 2020.
- [7] Dagan N, Barda N, Kepten E, Miron O, Perchik S, Katz MA, et al. BNT162b2 mRNA Covid-19 Vaccine in a Nationwide Mass Vaccination Setting. *N Engl J Med* 2021;384(15):1412–23.

- [8] Menni C, Klaser K, May A, Polidori L, Capdevila J, Louca P, et al. Vaccine side-effects and SARS-CoV-2 infection after vaccination in users of the COVID Symptom Study app in the UK: a prospective observational study. *Lancet Infect Dis*.
- [9] Hall VJ, Foulkes S, Charlett A, Atti A, Monk EJM, Simmons R, et al. SARS-CoV-2 infection rates of antibody-positive compared with antibody-negative health-care workers in England: a large, multicentre, prospective cohort study (SIREN). *Lancet* 2021;397(10283):1459–69.
- [10] Vasilieou E, Simpson CR, Shi T, Kerr S, Agrawal U, Akbari A, et al. Interim findings from first-dose mass COVID-19 vaccination roll-out and COVID-19 hospital admissions in Scotland: a national prospective cohort study. *Lancet* 2021;397(10285):1646–57.
- [11] Abu-Raddad LJ, Chemaitelly H, Butt AA. Effectiveness of the BNT162b2 Covid-19 Vaccine against the B.1.1.7 and B.1.351 Variants. *N Engl J Med* 2021;385(2):187–9.
- [12] Baden LR, El Sahly HM, Essink B, Kotloff K, Frey S, Novak R, et al. Efficacy and Safety of the mRNA-1273 SARS-CoV-2 Vaccine. *N Engl J Med* 2020;384(5):403–16.
- [13] Ramasamy MN, Minassian AM, Ewer KJ, Flaxman AL, Folegatti PM, Owens DR, et al. Safety and immunogenicity of ChAdOx1 nCoV-19 vaccine administered in a prime-boost regimen in young and old adults (COV002): a single-blind, randomised, controlled, phase 2/3 trial. *Lancet* 2020.
- [14] Steyn N, Binny RN, Hannah K, Hendy SC, James A, Kukutai T, et al. Estimated inequities in COVID-19 infection fatality rates by ethnicity for Aotearoa New Zealand. *N Z Med J* 2020;133(1521):12.
- [15] Steyn N, Binny RN, Hannah K, Hendy SC, James A, Lustig A, et al. Māori and Pacific People in New Zealand have higher risk of hospitalisation for COVID-19. *medRxiv* 2020.12.25.20248427.
- [16] Davies NG, Klepac P, Liu Y, Prem K, Jit M, Eggo RM. Age-dependent effects in the transmission and control of COVID-19 epidemics. *Nat Med* 2020;26(8):1205–11.
- [17] Lipsitch M, Dean NE. Understanding COVID-19 vaccine efficacy. *Science* 2020;370(6518):763.
- [18] Prem K, van Zandvoort K, Klepac P, Eggo RM, Davies NG, Cook AR, et al. Projecting contact matrices in 177 geographical regions: an update and comparison with empirical data for the COVID-19 era. *medRxiv* 2020.07.22.20159772.
- [19] Compass Research Centre. International Social Survey Programme (ISSP) Social Networks - New Zealand Survey. COMPASS Research Centre, New Zealand: University of Auckland; Auckland; 2017. 2018.
- [20] Stats NZ Tatauranga Aotearoa. Living in a crowded house: Exploring the ethnicity and well-being of people in crowded households, 2018.
- [21] Ministry of Health New Zealand. Ventilators and ICU bed capacity, 2020.
- [22] The Institute of Environmental Science and Research EpiSurv, New Zealand notifiable disease surveillance database; 2020. <https://surv.esr.cri.nz/episurv/> (accessed 11 November).
- [23] Verity R, Okell LC, Dorigatti I, Winskill P, Whittaker C, Imai N, et al. Estimates of the severity of coronavirus disease 2019: a model-based analysis. *Lancet Infect Dis* 2020;20(6):669–77.
- [24] Rossella P, Caterina S, David K, Nikki K, Salvatore R. Similarity in Case Fatality Rates (CFR) of COVID-19/SARS-COV-2 in Italy and China. *J Infect Dev Ctries* 2020;14(02).
- [25] Jordan RE, Adab P, Cheng KK. Covid-19: risk factors for severe disease and death. *BMJ* 2020;368:m1198.
- [26] Our World in Data. Coronavirus (COVID-19) Vaccinations. <https://ourworldindata.org/covid-vaccinations> (accessed 12 July 2021).
- [27] Stats NZ Tatauranga Aotearoa. New Zealand Population Estimates. 2020.
- [28] Moore S, Hill EM, Tildesley MJ, Dyson L, Keeling MJ. Vaccination and non-pharmaceutical interventions for COVID-19: a mathematical modelling study. *Lancet Infect Dis* 2021.
- [29] Amit S, Regev-Yochay G, Afek A, Kreiss Y, Leshem E. Early rate reductions of SARS-CoV-2 infection and COVID-19 in BNT162b2 vaccine recipients. *Lancet* 2021;397(10277):875–7.
- [30] Mahase E. Covid-19: South Africa pauses use of Oxford vaccine after study casts doubt on efficacy against variant. *BMJ* 2021;372.
- [31] Madhi SA, Baillie V, Cutland CL, Voysey M, Koen AL, Fairlie L, et al. Efficacy of the ChAdOx1 nCoV-19 Covid-19 Vaccine against the B.1.351 Variant. *N Engl J Med* 2021;384(20):1885–98.
- [32] Campbell F, Archer B, Laursen-Schafer H, Jinnai Y, Konings F, Batra N, et al. Increased transmissibility and global spread of SARS-CoV-2 variants of concern as at June 2021. *Eurosurveillance* 2021;26(24):2100509.
- [33] Public Health England (PHE). SARS-CoV-2 variants of concern and variants under investigation in England: technical briefing 15, 2021.
- [34] Public Health Scotland. COVID-19 in Scotland. https://public.tableau.com/profile/phs.covid.19#!/vizhome/COVID-19DailyDashboard_15960160643010/Overview (accessed 12 July 2021).
- [35] Bubar KM, Reinholt K, Kissler SM, Lipsitch M, Cobey S, Grad YH, et al. Model-informed COVID-19 vaccine prioritization strategies by age and serostatus. *Science* 2021.
- [36] Sandmann FG, Davies NG, Vassall A, Edmunds WJ, Jit M, Sun FY, et al. The potential health and economic value of SARS-CoV-2 vaccination alongside physical distancing in the UK: a transmission model-based future scenario analysis and economic evaluation. *Lancet Infect Dis* 2021.
- [37] Blakely T, Thompson J, Bablani L, Andersen P, Ouakrim DA, Carvalho N, et al. Determining the optimal COVID-19 policy response using agent-based modelling linked to health and cost modelling: Case study for Victoria. *Australia. medRxiv* 2021.01.11.21249630.
- [38] Israel Ministry of Health. The Dashboard. <https://datadashboard.health.gov.il/COVID-19/general> (accessed 20 June 2021).
- [39] Mecenas P, RTdRM Bastos, Vallinoto ACR, Normando D. Effects of temperature and humidity on the spread of COVID-19: A systematic review. *PLoS One* 2020;15(9):e0238339-e.
- [40] Audi A, Allbrahim M, Kaddoura M, Hijazi G, Yassine HM, Zaraket H. Seasonality of Respiratory Viral Infections: Will COVID-19 Follow Suit? *Front Public Health* 2020;8(576).
- [41] Kemp S, Harvey W, Datir R, Collier D, Ferreira I, Carabelli A, et al. Recurrent emergence and transmission of a SARS-CoV-2 Spike deletion Δ H69/V70. *bioRxiv* 2020.
- [42] Public Health England (PHE). Investigation of SARS-CoV-2 variants of concern: technical briefings, 2020.