

Impact of *Phytophthora agathidicida* infection on canopy and forest floor plant nutrient concentrations and fluxes in a kauri-dominated forest

Luitgard Schwendenmann¹  | Beate Michalzik^{2,3} 

¹School of Environment, University of Auckland, Auckland, New Zealand

²Soil Science, Institute of Geography, Friedrich Schiller University Jena, Jena, Germany

³German Centre for Integrative Biodiversity Research (iDiv) Halle-Jena-Leipzig, Leipzig, Germany

Correspondence

Luitgard Schwendenmann, School of Environment, University of Auckland, Private Bag 92019, Auckland 1142, New Zealand.

Email: l.schwendenmann@auckland.ac.nz

Funding information

Friedrich-Schiller-Universität Jena, Grant/Award Number: N/A; The University of Auckland, Grant/Award Number: N/A

Abstract

Kauri dieback, caused by *Phytophthora agathidicida*, is a biotic disturbance that poses a recent threat to the survival of kauri (*Agathis australis*) forests in New Zealand. Previous studies have shown that throughfall and stemflow play an important role in the kauri forests' internal nutrient cycle. However, the effects of *P. agathidicida* infection on canopy and forest floor nutrient fluxes in kauri forests remain unknown. Here, we measured throughfall, stemflow and forest floor water yield, nutrient (potassium, calcium, magnesium, manganese, silicon, sulfur, sodium, iron) concentrations and fluxes of ten kauri trees differing in soil *P. agathidicida* DNA concentration, and health status. We did not observe an effect of soil *P. agathidicida* DNA concentration on throughfall, stemflow, and forest floor water yield. Throughfall and forest floor nutrient concentrations and fluxes decreased (up to 50%) with increasing soil *P. agathidicida* DNA concentration. We found significant effects on potassium and manganese fluxes in throughfall; calcium and silicon fluxes in forest floor leachate. A decline in canopy and forest floor nutrient fluxes may result in soil nutrient imbalances, which in turn may negatively impact forest productivity and may increase the susceptibility of trees to future pathogen infection in these ecologically unique kauri forests. Given our findings and the increasing spread of *Phytophthora* species worldwide, research on the underlying physiological mechanisms linking dieback and plant-soil nutrient fluxes is critical.

KEYWORDS

forest floor leachate, macro-, micro-, and beneficial nutrients, nutrient cycling, *Phytophthora*, plant pathogens, stemflow, throughfall

1 | INTRODUCTION

Natural disturbances can substantially alter a range of ecosystem processes and related functions, and consequently ecosystem services (Rouault et al., 2006; Schowalter et al., 2018; Thom & Seidl, 2016).

Insects and pathogens are major natural biotic disturbance agents and often an integral part of forest dynamics (Dale et al., 2001; Kautz et al., 2017; Wardle & Bardgett, 2008). Biotic disturbances can disrupt ecosystems' structure, composition, and function at the stand and landscape scale (Burdon & Laine, 2019; Flower & Gonzalez-Meler, 2015;

This is an open access article under the terms of the Creative Commons Attribution License, which permits use, distribution and reproduction in any medium, provided the original work is properly cited.

© 2021 The Authors. *Ecology and Evolution* published by John Wiley & Sons Ltd.

Seidl et al., 2017). Kauri dieback, caused by *Phytophthora agathidicida*, is one such recent threat that endangers the survival of the ecologically important conifer species *Agathis australis* (kauri) in New Zealand. *Phytophthora* species (Oomycota, Stramenopila) are soil-, water-, or airborne plant pathogens that pose major challenges to global biosecurity, and some *Phytophthora* species are threats to forest ecosystems across the globe (Jung et al., 2018). A changing climate may increase the pressure on forests, as changes in temperature and rainfall patterns may result in changes to the biogeographic range of plant pathogens (Shaw & Osborne, 2011) and may increase outbreaks (Jamieson et al., 2012). *Phytophthora* species are responsible for the mortality of several tree species in Europe, North America, and Australia (Jung et al., 2018). Several *Phytophthora* species (e.g., *Phytophthora cinnamomi*, *Phytophthora cryptogea*, *Phytophthora kernoviae*) are currently present in New Zealand native and plantation forests (Beever et al., 2009; Scott & Williams, 2014). Studies have shown that *P. cinnamomi* results in fine root death and symptoms of chlorosis in New Zealand native tree species such as *Agathis australis* and *Phyllocladus trichomanoides*, affects regeneration and thus may alter the long-term vegetation dynamic of these forests (Horner, 1984; Johnston et al., 2003; Podger & Newhook, 1971).

Pathogen-driven host dieback and mortality and subsequent changes in plant species composition are likely to affect biogeochemical fluxes. Given their rapid response to disturbance and environmental change, water-bound ecosystem fluxes function as an early marker of shifting ecosystem conditions (Likens, 2013; McClain et al., 2003). Throughfall and stemflow are critical components of the hydrological and biogeochemical cycles of forest ecosystems, as they are the main pathways for transferring precipitation, solutes, organic matter, and microorganisms from the phyllosphere (aboveground surfaces of plants) to the pedosphere (Levia & Frost, 2006; Parker, 1983; Van Stan & Stubbins, 2018). Of particular importance in ecosystems' internal element cycling is the transfer of plant nutrients. Inorganic nutrients are essential or beneficial to fundamental physiological processes of plant metabolism, plant growth and fitness, and soil fertility (Marschner, 2011; Parker, 1983; Schulze et al., 2019). Precipitation passing through the canopy as throughfall and flowing along stems as stemflow becomes enriched in micro- and macronutrients (Staelens et al., 2007). Another important ecosystem compartment in the internal nutrient cycle is the forest floor. Solution collected underneath the forest floor (forest floor leachate) is often greatly enriched in nutrients compared to bulk precipitation and canopy water fluxes due to the leaching of nutrients from organic matter (Batjes, 1996). Nutrient transfer to the soil by throughfall deposition and forest floor leachates is an important input pathway, particularly in ecosystems where nutrient return through litterfall decomposition is slow (van Langenhove et al., 2020; Will, 1959) and in ecosystems with low soil nutrient availability (Forti & Moreira-Nordermann, 1991; Moslehi et al., 2019; Parker, 1983).

The magnitude of nutrient concentration and fluxes in throughfall, stemflow, and forest floor leachate are the result of the interaction of several variables, including meteorological conditions (Dunkerley, 2014), seasonality (Macinnis-Ng et al., 2014), intra- and

interspecies differences among tree species (Lilienfein & Wilcke, 2004; Schroth et al., 1999) and vegetation structure (Crockford & Richardson, 2000; Levia & Herwitz, 2002). Plant health (e.g., plant nutrient status, mechanical injury, insect pest, and pathogen-related damage) has also been shown to affect canopy water yields and nutrient fluxes. For example, annual throughfall fluxes of Ca, Mg, and Fe were up to 100% higher beneath spruce trees affected by air pollutants, insects and microfungi in Sweden, while Mn and K fluxes decreased (up to 30%) compared to throughfall fluxes from healthy reference trees (Alenäs & Skärby, 1988). Bark beetle caused forest dieback in a Norway spruce-dominated forest in the Czech Republic resulted in a decrease in K, Ca and Mg concentrations in throughfall (Kopáček et al., 2017). Defoliation caused by the pale tussock moth's larvae in a beech forest in southern Sweden resulted in an increase in K throughfall flux (Nilsson, 1978). Varying canopy nutrient flux responses to biotic disturbances may partly be driven by differences in the interaction of the pest and/or pathogen and host and the role of the host in the forest (Lovett et al., 2002). However, the implications of plant pathogen caused forest dieback, especially through fungus-like organisms such as *Phytophthora* species, on canopy and forest floor nutrient fluxes remain largely unknown.

Phytophthora agathidicida is a novel and significant threat to the survival of the endemic, ecologically unique and culturally important kauri forests in the northern part of New Zealand. Kauri is endemic to northern New Zealand (north of latitude 38°S) (Ecroyd, 1982) and is the largest and longest-living tree species in the country. A distinctive plant community is found underneath mature kauri trees (Wyse et al., 2014) which has been associated with the particular soil characteristics found in kauri-dominated forests such as low pH and high ammonium concentrations (Verkaik et al., 2007). Undisturbed kauri stands are characterized by thick forest floors (litter plus organic layer) with mean residence time of 9–78 years (Silvester & Orchard, 1999). Throughfall nutrient fluxes (sum of Na, Ca, K, and Mg) were 2.5-times higher than litterfall nutrient fluxes (Reed, 1984), suggesting that throughfall contributed significantly to the amount of nutrients reaching the pedosphere (Reed, 1984; Sangster, 1986).

In this study, we use canopy and forest floor nutrient data collected over one year to test whether canopy and forest floor plant nutrient fluxes change along a *P. agathidicida* infection gradient in a kauri-dominated forest. In a previous study, using the same study design, we investigated the particulate and dissolved organic matter fluxes in this kauri-dominated forest. Organic matter and inorganic nutrients differ considerably in their chemical composition, transformation mechanisms, and their role within ecosystems (Qualls et al., 2000).

2 | MATERIAL AND METHODS

2.1 | Study area

This study was conducted in the Karamatura Valley (37°00'S, 174°33'E) near Huia. Huia is located ~ 30 km southwest of central

Auckland, New Zealand, in the southern part of the Waitakere Ranges Regional Park. The study site (approximately 2,500 m²) is located along a northeast facing ridgeline between 125 and 140 m above mean sea level, with slopes ranging between 5° and 15° (Figure 1).

Mean annual temperature in the area is 14°C. Total annual rainfall measured at a nearby station (Arataki, 7.5 km northeast of the study area, 190 m above sea level) is approximately 1,600 mm (1981–2010) (Environmental Monitoring, Auckland Council GeoMaps, <https://geomapspublic.aucklandcouncil.govt.nz/viewer/index.html>). Approximately 70% of annual rainfall occurs between June and August (austral winter).

The soils are loams/sandy loams and classified as Typic Haplohumult (US Soil Taxonomy; Soil Survey Staff, 2014), and developed from andesitic grit, sand, and siltstone (Hayward, 1976). The parent material originates from volcanic conglomerate and lava flows caused by volcanic eruptions 12–25 million years ago (Searle & Mayhill, 1981). The area is characterized by a steep and rugged topography with elevation ranging from sea level to 475 m above sea level.

Regenerating native shrubland and forests, wetland, and dune ecosystems are the predominant vegetation types in the Waitakere Ranges. The area has been extensively logged in the mid-late 19th and early 20th centuries (Esler, 1983). Kauri is the dominant canopy and subcanopy species covering over 70% of the study site. Other conifer tree species are *Phyllocladus trichomanoides* and *Dacrydium cupressinum*. Other common understory species are *Kunzea ericoides*, *Hedycarya arborea*, *Leionema nudum*, and *Cyathea dealbata*.

A change in the health status of kauri trees in the Waitakere Ranges Regional Park during the mid-2010s and subsequent investigations have shown that *P. agathidicida* is the underlying agent of kauri dieback (Waipara et al., 2013; Weir et al., 2015). Recent studies (Hill & Waipara, 2017) estimated that approximately 30% of the kauri-dominated forests in the Waitakere Ranges Regional Park exhibit symptoms of kauri dieback. Although kauri dieback in the area has been observed over the last 15 years, it is unknown for how

long *P. agathidicida* has been present in this particular forest stand. It should also be noted that kauri dieback symptoms may be caused by other agents (e.g., other pests and/or pathogens) or environmental conditions (e.g., drought). Furthermore, kauri roots may already be infected but trees may not show any visual symptoms, as there may be a time lag between infection and the appearance of visual symptoms. Little is known about the incubation period, which may vary among kauri individuals and among environmental site conditions (Bradshaw et al., 2020).

2.2 | Tree characteristics

Ten kauri trees differing in their health status were selected for this study. Tree health status was visually evaluated by examining crown and trunk conditions, including leaf yellowing, canopy thinning, and occurrence of resin bleeding (Hill & Waipara, 2017; Waipara et al., 2013).

The diameter of the selected kauri trees was measured at 1.3 m above the ground using a diameter tape (Table 1). Crown radii (= distance from the center of the trunk to the perimeter of the crown) in eight cardinal directions were measured in the field. The crown projection area was estimated using the mean of the crown radii (Pretzsch et al., 2015). The thickness of the forest floor (litter plus organic layer) was measured using a retractable tape.

Canopy density (also referred to as canopy closure) was determined from photographs taken at 1.5 m above the ground (next to the throughfall collectors) using a digital camera (OM-D E-M5, Olympus, Olympus 12–50 mm lens set at 12 mm) and the computer software CanopyDigi developed by Goodenough and Goodenough (2012).

To minimize the risks of spreading the pathogen, we followed the “Hygiene procedures for kauri dieback” (Kauri Dieback Management Programme, 2013) by cleaning and disinfecting (using SteriGENE) footwear upon entering and leaving the study site, and all equipment was sanitized between use on different trees.

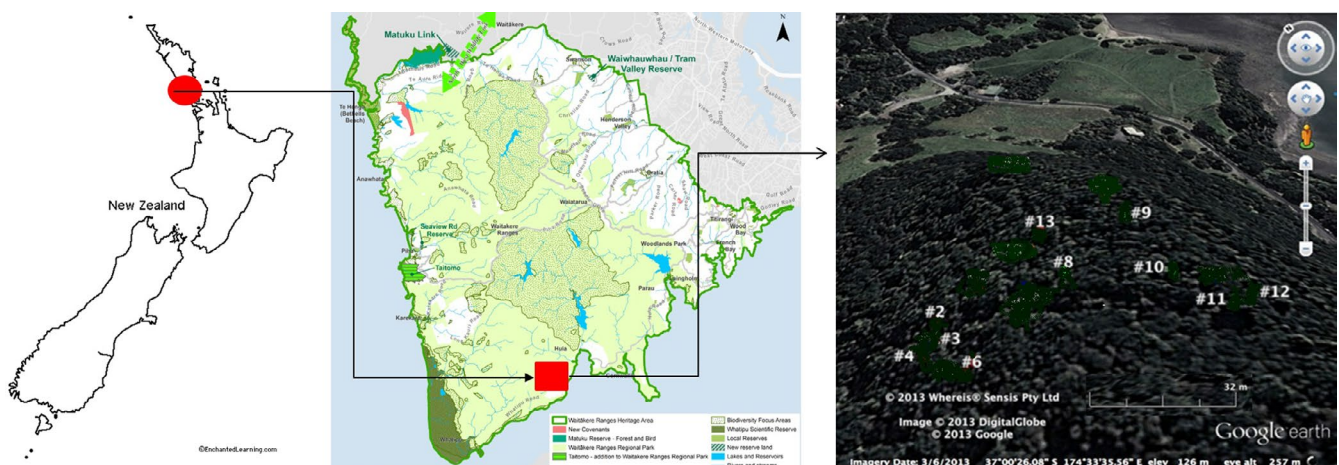


FIGURE 1 Map of study area and location of investigated kauri trees, Huia, Waitakere Ranges Regional Park, Auckland, New Zealand

TABLE 1 Tree characteristics, health status, and soil *P. agathidicida* DNA concentration

Tree number	Tree health status ^a (2015)	Basal area (2015)	Crown projection area (2013)	Canopy density (2013)	Median soil <i>P. agathidicida</i> DNA concentration (2015)	Forest floor (2015)
		m ²	m ²	%	fg/μL	cm
2	10	0.155	17.1	82.9	56.4	2.0
3	9	0.256	42.1	69.4	56.6	3.0
4	8	0.276	100.7	74.2	48.8	3.0
6	7	0.311	79.3	72.6	27.9	3.0
8	4	0.658	102.3	79.6	25.4	12.0
9	3	0.243	31.9	83.7	42.0	4.0
10	5	0.353	80.7	75.6	21.3	6.5
11	1	0.435	40.5	81.8	23.1	15.0
12	2	0.177	30.7	86.7	25.4	4.0
13	6	0.290	83.5	83.9	35.5	6.5

^aVisual assessment: Scale from 1 to 10 with 1 indicating “minimal visual signs of dieback” and 10 as “dead.”

2.3 | Quantification of *P. agathidicida* DNA concentration in soil

Quantitative PCR (qPCR) was employed to detect *P. agathidicida*, and to quantify the *P. agathidicida* DNA concentration in the soil, using the TaqMan approach (Than et al., 2013). Mineral soil (0–10 cm) samples were taken at one meter distances to the trunk in four cardinal directions, and each sample was analyzed separately (Singh et al., 2017). The DNA was extracted from the soil using the PowerSoil®DNA Isolation Kit (MO BIO Laboratories Inc., Solana Beach, CA, USA). The ITS (internal transcribed spacer) region was amplified using a TaqMan probe and primers ITS_F2 and ITS_R3 (Than et al., 2013). The qPCR was performed on an ABI Prism 7900HT Sequence Detection System (Applied Biosystems) and then analyzed by the qPCR analysis software, SDSv2.4 (Applied Biosystems). The absolute quantification method was used to infer the DNA concentration of *P. agathidicida* in each of the samples. A

standard curve was generated by plotting the log₁₀ DNA concentration of standards, against their mean cycle threshold value, which was determined spectrophotometrically at the exponential phase of the qPCR process. A linear regression model was applied to estimate the *P. agathidicida* DNA concentration (fg/μL) in each soil sample. The values presented are the median soil *P. agathidicida* DNA concentration of the samples taken in four cardinal directions. Further details of the methodology are given in Singh et al., 2017).

2.4 | Water sampling

Bulk precipitation collectors ($n = 3$, spaced 10 m apart) were located in a pasture (approximately 150 m from the study area, 50 m above sea level). The collectors consisted of plastic funnels (area = 113 cm²) mounted on top of 2 L polyethylene (PE) bottles. The same type of collector was used for throughfall (Figure 2a).

**FIGURE 2** Canopy and forest floor leachate collectors: (a) throughfall, (b) stemflow, and (c) free-draining lysimeter

All photos: Beate Michalzik

Throughfall collectors ($n = 5$ per tree) were positioned in a cross-shaped grid around each tree trunk. Four collectors were placed in the four cardinal directions at 1.5 m of the trunk, and one collector close to the trunk to capture the characteristics of the core crown area, following the approach described in Schroth et al., (2001). To avoid contamination by animal and plant debris, a 2-mm PE mesh filter was placed at the bottom of the funnels. The PE bottles were washed frequently with HCl to reduce the growth of microorganisms. To minimize exposure to ultraviolet radiation and to prevent algae growth between sample collections, the collectors were wrapped in aluminum foil.

The stemflow collar consisted of a butyl inner tube and foam tube (4 cm in diameter, cut in half). The foam tube was wrapped around the trunk at approximately 1.3 m above the ground and fixed to the stem with the inner tube to create a watertight seal. The collars were sloped around the tree and connected to a PE tube fitted at the lowest point to drain off the stemflow into a 20 L PE bucket (Figure 2b).

Free-draining lysimeters ($n = 2$ per tree) were used to collect forest floor leachate. One lysimeter was located at a 1.5 m distance from the trunk, and one was close to the trunk. The lysimeters (area = 298 cm²) consisted of polypropylene (PP) plates covered with a 0.5 mm PE net, and were connected with a PE tube to 2 L PE bottles (Figure 2c).

Bulk precipitation, throughfall, stemflow, and forest floor leachate were collected over one year. From 5 July to 30 September 2015, the sampling interval was weekly to fortnightly. Due to logistical constraints, samples were collected on a monthly basis from 27 October 2015 to 20 June 2016. Throughfall from the individual collectors of a given tree was pooled to one volume-weighted sample per tree per collection date. The solution from each individual lysimeter was pooled to one volume-weighted sample per collection date. Water volume in each individual sampler on a given sampling date was measured with a graduated cylinder.

2.5 | Chemical analysis

Water samples were filtered (GF 6, Whatman, GE Healthcare, Buckinghamshire, UK, pore size < 1 μm) on the day of collection and then frozen (-18°C). Potassium (K, 0.1 mg/L), calcium (Ca, 0.1 mg/L), magnesium (Mg, 0.02 mg/L), phosphorous (P, 0.1 mg/L), sulfur (S, 0.3 mg/L), sodium (Na, 0.1 mg/L), silicon (Si, 0.005 mg/L), iron (Fe, 0.01 mg/L), and manganese (Mn, 0.003 mg/L) concentrations were measured using an inductively coupled plasma optical emission spectrometer (ICP-OES, Varian 725-ES, Agilent Technologies Australia Pty Ltd, Mulgrave, Victoria, Australia). Values in brackets give the detection limit of a given element. Nutrient concentrations below the detection limit were arbitrarily set to half of that limit for further calculations. Phosphorous (P) concentrations were below the detection limit in most ecosystem

components, and are not presented. Nutrient concentrations were not measured in samples taken on 21 July, 2 August, 26 August, and 9 September 2015.

2.6 | Water yield and nutrient fluxes

Bulk precipitation, throughfall, and forest floor leachate water yield were estimated in mm units as follows:

$$\text{Bulk precipitation (BP), throughfall (TF), forest floor (FF) leachate (mm)} \\ = \frac{\text{BP, TF, and FF volume (BP, TF, FF) (L)}}{\text{collector area (0.0113 m}^2 \text{ for BP and TF; 0.0298 m}^2 \text{ F for FF)}} \quad (1)$$

Stemflow yield was estimated by dividing the stemflow volume by the crown projection area of a given tree to obtain stemflow yield per tree (= stemflow depth) (Park & Cameron, 2008; van Stan & Stubbins, 2018).

$$\text{Stemflow (mm)} = \frac{\text{stemflow volume (L)}}{\text{crown projection area (m}^2\text{)}} \quad (2)$$

Frequent overflow of stemflow collectors was observed for trees 3, 4, and 13. Thus, stemflow yield could not be calculated for these trees. In the case of missing stemflow values, or overflow of the remaining trees, gap filling was done. Regression analysis was applied to determine the relationship between bulk precipitation and stemflow, and throughfall and stemflow. These functions (linear or polynomial) were used to estimate stemflow volumes for collection dates with missing stemflow data or stemflow overflow.

The nutrient input (mg/m² sampling date) to the mineral soil through the various water pathways for a given sampling date was calculated by multiplying nutrient concentrations (mg/L) with the corresponding water volume (mm). The nutrient flux of all collection sampling dates was summed together to obtain the annual nutrient yield per tree (mg/m² year).

To estimate the nutrient flux for collection dates with missing nutrient concentrations, we determined the relationship between water yield and nutrient fluxes for a given tree across the sampling period using regression analysis.

To assess the canopy effect on bulk precipitation chemistry, the net throughfall nutrient fluxes were calculated as follows (Parker, 1983):

$$\text{Net throughfall flux}_x = \text{throughfall flux}_x - \text{bulk precipitation flux}_x \quad (3)$$

where x is a given macro-, micro-, or beneficial nutrient.

The contribution of seasalt-derived elements was estimated as follows (Keene et al., 1986; Pierret et al., 2019):

$$\text{Enrichment factor (X)} = \frac{\left(\frac{X}{\text{Na or Mg}}\right)_{\text{BP,TF,SF,FF}}}{\left(\frac{X}{\text{Na or Mg}}\right)_{\text{seawater}}} \quad (4)$$

TABLE 2 Macro- (K, Ca, Mg, S), micro- (Fe, Mn), and beneficial (Na, Si) nutrient concentrations in bulk precipitation, throughfall, stemflow, and forest floor leachate, Huia, New Zealand. Values are median, minimum (min), and maximum (max) concentrations across all trees ($n = 10$) and sampling dates ($n = 17$)

	K	Ca	Mg	S	Fe	Mn	Na	Si
	mg/L							
<i>Bulk precipitation</i>								
Median	0.591 ^a	0.491 ^a	0.841 ^a	1.137 ^a	0.0005 ^a	0.0015 ^a	5.558 ^a	0.017 ^a
Min.–max.	0.050–0.681	0.075–0.824	0.164–1.554	0.150–1.876	0.0005–0.0005	0.0015–0.007	1.461–10.110	0.008–0.281
<i>Throughfall</i>								
Median	6.715 ^{a,b}	1.896 ^a	2.900 ^{a,b}	3.006 ^{a,b}	0.0005 ^a	0.024 ^{a,b}	13.480 ^{a,b}	0.035 ^{a,b}
Min.–max.	0.218–23.840	0.178–6.658	0.257–13.160	0.150–11.580	0.0005–0.035	0.0015–0.245	1.461–62.930	0.005–0.112
<i>Stemflow</i>								
Median	10.040 ^b	2.190 ^a	3.221 ^b	3.452 ^b	0.012 ^b	0.074 ^b	15.840 ^b	0.053 ^b
Min.–max.	0.391–44.900	0.209–17.120	0.194–19.930	0.472–13.790	0.0005–0.078	0.002–0.316	1.767–66.230	0.008–0.197
<i>Forest floor leachate</i>								
Median	14.590 ^{b,c}	8.478 ^b	5.289 ^{b,c}	4.993 ^{b,c}	0.240 ^b	0.046 ^b	20.035 ^b	0.161 ^{b,c}
Min.–max.	2.465–51.940	1.517–27.940	0.782–15.620	0.385–12.460	0.089–0.809	0.002–0.780	1.645–65.090	0.039–0.683

Different letters indicate significant differences between water pathways for a given element.

where X/Na or $Mg_{BP,TF,SF,FF}$ is the ratio between the element X and the concentration of Na or Mg in the corresponding sample of bulk precipitation, throughfall, stemflow, and forest floor leachate. X/Na or $Mg_{seawater}$ is the ratio between the element X and the concentration of Na or Mg in seawater.

These calculations were based on the assumption that Na or Mg originated from sea spray, and had a conservative behavior. Na and Mg concentrations were strongly correlated ($\rho = 0.860$, $p < .001$) suggesting that Mg in this ecosystem is mainly seasalt-derived. An enrichment factor > 1 indicates a contribution of nonsea sources (Keene et al., 1986; Mimura et al., 2016; Pierret et al., 2019).

2.7 | Statistical analysis

In view of the non-normal distribution of water yields, nutrient concentrations, and fluxes, nonparametric statistical tests (Kruskal–Wallis followed by post-hoc separation; significant at $p < .05$) were used to assess differences in median values between ecosystem components (bulk precipitation, throughfall, stemflow, and forest floor leachate). The relationships between soil *P. agathidicida* DNA concentration, tree characteristics (canopy density, forest floor depth), annual water yield, and nutrient fluxes were tested using Spearman rank correlation analysis.

Linear mixed-effect models were used to identify the effect of soil *P. agathidicida* DNA concentration and canopy density on response variables (water flux, nutrient concentrations and fluxes) in throughfall, stemflow, and forest floor leachate. Visual tree health status ($\rho = 0.723$, $p = .018$, $n = 10$) and tree diameter ($\rho = -0.650$, $p = .042$, $n = 10$) were significantly correlated with soil *P. agathidicida* DNA concentration and thus were not included in the linear mixed-effect models. Soil *P. agathidicida* DNA concentration (expressed as a z-score), canopy density (expressed as a z-score), water flux (when testing nutrient concentrations), and forest floor depth (when testing nutrient concentration and fluxes in forest floor leachate) were defined as fixed effects. Sampling date (expressed as days since the start of sample collection) was included as a random factor to account for repeated measures. Simple (simple effects) models included soil *P. agathidicida* DNA concentration, canopy density, water flux (when testing nutrient concentrations), forest floor depth, and sampling date. Complex models contained all factors without interactions, and maximal models contained all factors and interactions. In cases of nonhomogeneity of residuals, the response variables were transformed. The models were run using restricted maximum-likelihood estimation. The Akaike's information criterion (AIC) value was calculated for each linear mixed model. The difference in AIC between models was calculated ($AIC_i - AIC_{min}$). The models with the highest explanatory power were identified when the model with the lowest AIC value differed by more than three from other models (Burnham & Anderson, 2002).

All statistical analyses were conducted using the software package IPM SPSS Statistics version 25 (IBM Corporation, Chicago, IL, USA).

3 | RESULTS

3.1 | Nutrient concentrations and fluxes in bulk precipitation, throughfall, stemflow, and forest floor leachate

Median concentrations in bulk precipitation varied by several orders of magnitude (ppb to ppm) between elements in the order Na > S > Mg > K > Ca > Si > Mn > Fe (Table 2). Significant differences in nutrient concentrations were only found between bulk precipitation and stemflow, and between bulk precipitation and forest floor leachate (Table 2). We found a clear seasalt contribution for Na in throughfall, stemflow, and forest floor solutions, and for S in all components with enrichment factors between 0.44 and 0.86. Magnesium originated partly from seasalt with enrichment factors between 0.69 and 0.89 for bulk precipitation, throughfall, and stemflow.

Medians of annual water flux decreased as precipitation percolated through the canopy and forest floor: bulk precipitation > throughfall > forest floor leachate (Table 3). Nutrient fluxes in throughfall were higher than in bulk precipitation (Table 3). Normalized to the crown projection area, stemflow nutrient fluxes contributed less than 3% of annual bulk precipitation nutrient fluxes. Forest floor leachate was enriched in all nutrients compared to bulk precipitation and stemflow, and had significantly higher Ca, Fe, Si fluxes than throughfall (Table 3).

3.2 | Effect of tree, soil, and infection metrics on nutrient concentrations and fluxes

We found significant negative correlations between soil *P. agathidicida* DNA concentrations and throughfall Ca ($\rho = -0.723$, $p = .018$), K ($\rho = -0.833$, $p = .003$), Mg ($\rho = -0.717$, $p = .02$), and S ($\rho = -0.857$, $p = .002$) concentrations, but no correlation between throughfall nutrient concentrations and canopy density. Stemflow nutrient concentrations were neither significantly correlated with soil *P. agathidicida* DNA concentration nor with canopy density. In contrast, forest floor leachate Mg ($\rho = -0.644$, $p = .044$), Na ($\rho = -0.687$, $p = .028$), S ($\rho = -0.657$, $p = .039$), and Si ($\rho = -0.705$, $p = .023$) concentrations were negatively correlated with soil *P. agathidicida* DNA concentration, and forest floor leachate. Na ($\rho = 0.753$, $p = .012$) and Si ($\rho = 0.833$, $p = .003$) concentrations were positively correlated with forest floor depth.

No significant correlation was found between throughfall, stemflow, and forest floor leachate water yield and soil *P. agathidicida* DNA concentration (Figure 3a-c). Throughfall K and Mn fluxes and forest floor Ca and Si fluxes were significantly negatively correlated with soil *P. agathidicida* DNA concentrations (Figure 4a-d). A positive correlation was found between forest floor depth and forest floor Mn ($\rho = 0.704$, $p = .023$) and Si ($\rho = 0.642$, $p = .045$) fluxes.

Linear mixed-effect models at tree level enabled separating the effects of canopy density, forest floor depth and soil *P. agathidicida*

TABLE 3 Annual macro- (K, Ca, Mg, S), micro- (Fe, Mn), and beneficial (Na, Si) nutrient fluxes in bulk precipitation, throughfall, stemflow, and forest floor leachate, Huia, New Zealand. Values are median, minimum (min), and maximum (max) fluxes across all trees ($n = 10$ for throughfall, $n = 10$ for forest floor leachate, $n = 7$ for stemflow). Different letters indicate significant differences between water pathways for a given element

	Water yield mm/ year	K mg/m ² year	Ca	Mg	S	Fe	Mn	Na	Si
<i>Bulk precipitation</i>									
Median	1693	1,000.56 ^a	717.83 ^a	1,692.15 ^a	1,924.94 ^a	0.85 ^a	4.23 ^a	9,409.69 ^a	28.49 ^a
<i>Throughfall</i>									
Median	1,125	9,135.17 ^b	2,277.70 ^b	3,988.40 ^b	3,521.08 ^b	2.67 ^b	32.24 ^b	17,091.16 ^b	33.23 ^a
Min	719	5,830.03	1,508.78	1,959.32	1,844.03	1.98	20.18	8,759.80	27.23
Max	1,319	12,947.64	3,140.06	5,387.15	5,071.22	6.11	61.77	22,542.41	45.62
<i>Stemflow</i>									
Median	1.433	14.37 ^c	4.93 ^c	4.66 ^c	5.26 ^c	0.02 ^c	0.11 ^c	27.86 ^c	0.10 ^b
Min	0.424	4.24	0.85	1.12	1.23	0.01	0.03	6.06	0.02
Max	2.537	34.12	6.60	11.33	10.41	0.03	0.26	51.78	0.12
<i>Forest floor leachate</i>									
Median	793	12,876.50 ^b	6,966.98 ^d	4,737.33 ^b	4,361.42 ^b	220.04 ^d	53.16 ^b	15,464.25 ^b	141.99 ^c
Min	709	9,910.17	4,567.42	3,378.62	3,045.18	137.13	30.49	11,531.06	108.22
Max	962	21,407.08	8,201.97	7,718.33	6,740.08	320.66	82.15	23,476.63	249.14
<i>Net throughfall flux</i>									
Median		8,134.61	1,559.87	2,296.25	1,596.14	1.82	28.01	7,681.47	4.75
Min		4,829.47	790.94	267.16	-80.91	1.13	15.95	-649.89	-1.25
Max		11,947.07	2,422.91	3,694.99	3,146.28	5.26	57.54	13,132.72	17.13

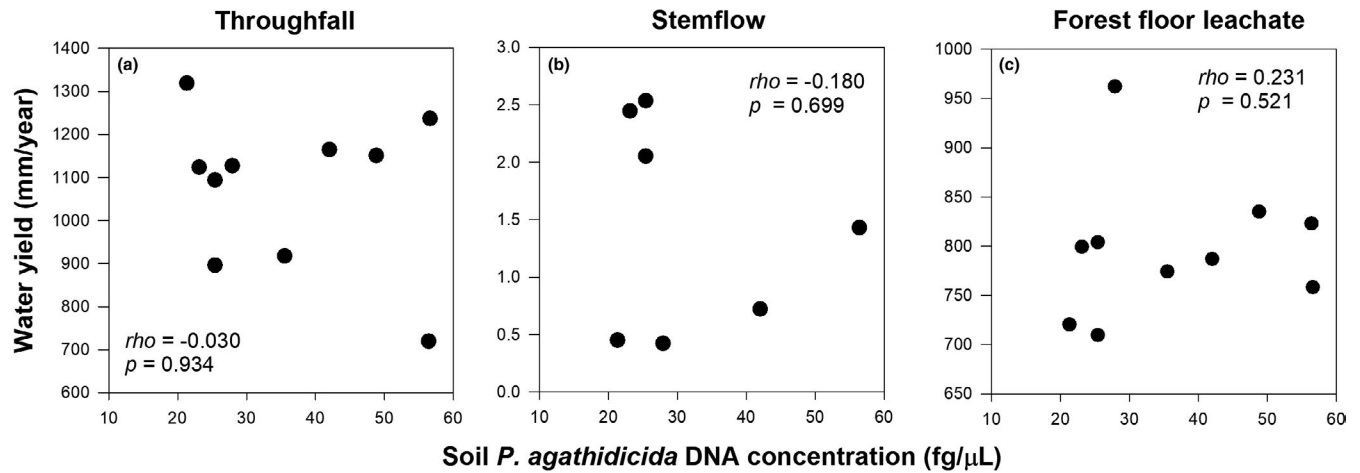
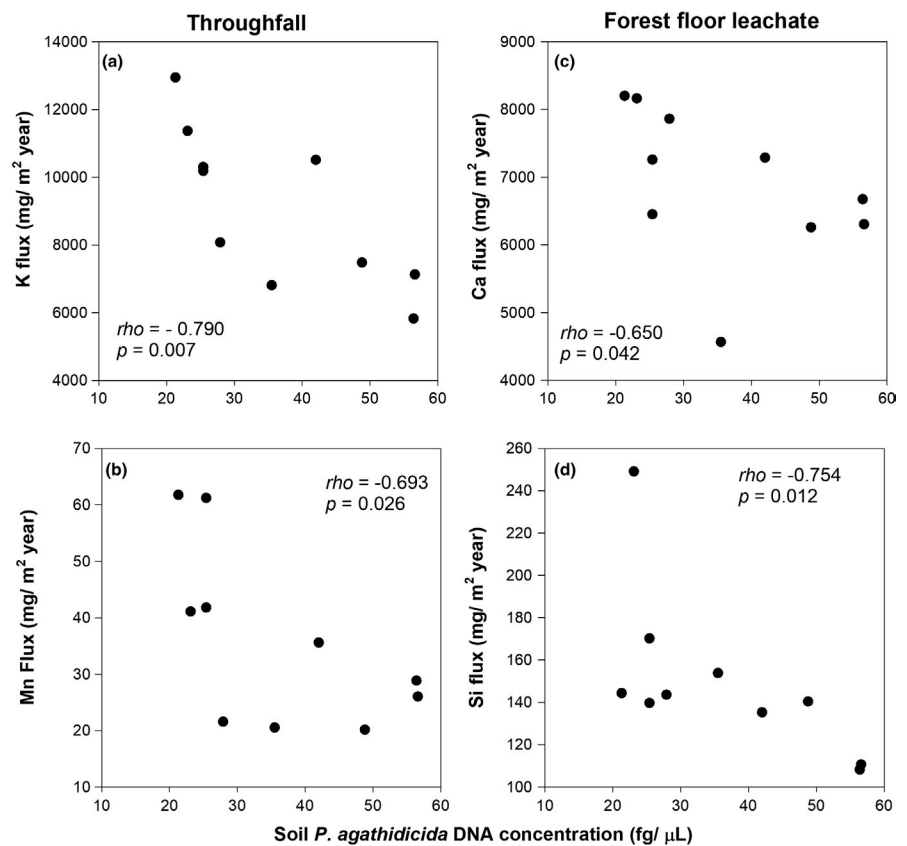


FIGURE 3 Soil *P. agathidicida* DNA concentration versus annual water yield of (a) throughfall, (b) stemflow, and (c) forest floor leachate

FIGURE 4 Soil *P. agathidicida* DNA concentration versus annual throughfall (a) potassium and (b) manganese fluxes and annual forest floor (c) calcium and (d) silicon fluxes



DNA concentration on nutrient concentration and fluxes. The results revealed that soil *P. agathidicida* DNA concentration significantly affected throughfall S, K, Ca, Mg, and Mn fluxes (Table S1b) and net throughfall fluxes of Ca, K, and Mg (Table S2). No effect of soil *P. agathidicida* DNA concentration was found for stemflow nutrient concentrations and fluxes (Table S3a, b). Linear mixed models revealed a significant effect of soil *P. agathidicida* DNA concentration on K, Mg, and Mn concentration in forest floor leachate (Table S4a).

4 | DISCUSSION

4.1 | Internal transfer of nutrients

The proximity of the study area to the coast (Manukau Harbour and Tasman Sea) partly explains that a considerable proportion of Na, S, and Mg in bulk precipitation and throughfall originates from marine sources. A close association between S, Na, Mg, and K in bulk precipitation has been reported at stations located

near the ocean, independent of longitude and latitude (Galloway et al., 1982; Ledgard & Upsdell, 1991; McDowell et al., 1990; Pierret et al., 2019). Seasalt influencing throughfall chemistry has been observed across a range of conifer and broadleaf forests located near the ocean (Farrell et al., 1998; Pierret et al., 2019; Westman, 1978).

Higher nutrient fluxes in throughfall compared to bulk precipitation as observed at Huia (Table 3) have also been reported across deciduous and evergreen forests (Carlisle et al., 1966; Parker, 1983; Staelens et al., 2007). However, the level of enrichment varied between nutrients ($K (+ 800\%) > Mn (+ 660\%) > Ca (+ 217\%) \approx Fe (+ 215\%) > Mg (+ 136\%) > S (+ 83\%) \approx Na (+ 82\%) > Si (+ 17\%)$). These differences are likely driven by nutrient availability and leachability. The cycling rate of K is fast, compared to other elements (Cole & Rapp, 1981), and as a monovalent cation, K is the most mobile element in the canopy and is readily leached (Parker, 1983; Staelens et al., 2003). In contrast, divalent cations (e.g., Ca, Mg) are more strongly bound (Cape, 1993; Pallardy, 2007). Magnesium and Fe occur in plants in chelated form and are less easy to leach, although Mn exhibits the second-highest increase among the studied nutrients, which might point to pathogen-induced leaf tissue damages or early leaf senescence.

Our throughfall sampling design (placing collectors exclusively under tree crowns) may have resulted in throughfall nutrient concentrations and fluxes biased high compared to the random placement of collectors across the forest stand. However, we argue that a comparison between macro-, micro-, and beneficial nutrients and nutrient fluxes across ecosystem compartments is still valid to gain insight into the internal nutrient cycling in this kauri-dominated stand and to provide background information to assess the implications of kauri dieback on the fate and transport of nutrients at the ecosystem level.

The contribution of stemflow to ecosystem nutrient fluxes at Huia was small which can be partly explained by the low annual stemflow water yield (1.43 mm/yr; 0.8% of bulk precipitation) (Table 3). Stemflow normalized to the crown projection area accounted for 1.0%–4.7% of bulk precipitation in kauri-dominated forests New Zealand (Fowler, 2015; Sangster, 1986). A global review showed that stemflow in two-thirds of the studies was less than 2% of bulk precipitation (van Stan & Gordon, 2018). However, stemflow can be enriched in nutrients (10–100 times higher than bulk precipitation and throughfall) and thus be an important spatially localized nutrient input to the soil near tree stems (Enright, 1987; van Stan & Gordon, 2018).

Forest floor nutrient fluxes in this kauri-dominated forest were higher ($Fe (+ 8,082\%) > Si (+ 326\%) > Ca (+ 205\%) > Mn (+ 64\%) > K (+ 38\%) > S (+ 24\%) > Mg (+ 19\%)$) than bulk precipitation nutrient fluxes. The high Fe flux was astonishing, given that Fe content in leaves and plant biomass is low ($< 100 \mu\text{g/g DW}$) (Schulze et al., 2019). We suggest that Fe might be derived from the dissolution of ferric oxides by water-soluble organic compounds (carboxylic acids, polyphenols) leached from kauri leaves and organic matter (Bloomfield, 1955). We assume that the release of the other nutrients from the forest floor is due to leaf litter decomposition and leaching. The nutrient concentrations in dead kauri leaves decline in

the order $Ca > K > Na = Mg$ (Enright & Ogden, 1987), which roughly aligns with the sequence given above.

To assess the input of nutrients reaching the soil by throughfall and forest floor leachates versus litterfall, we compared throughfall and forest floor leachate nutrient fluxes at Huia (Table 3) with annual litterfall nutrient fluxes measured in a nearby kauri-dominated forest at Huapai (Enright, 2001). Forest structure, basal area, and litterfall at Huia (van der Westhuizen, 2014) and Huapai (Enright, 2001) are similar. The amount of K and Mg returned to the forest floor by throughfall was 2 and 2.5 times higher, respectively, than by litterfall. The leaching of K and Mg from the forest floor was up to three times larger than K and Mg input via litterfall. This is in line with results from a study conducted at Huapai where nutrient input via throughfall and stemflow was three times that from litterfall (Reed, 1984). Large buildup of organic matter (up to 2 m close to tree trunks) with resident times of up to 78 years (Silvester & Orchard, 1999) partly explains the lower nutrient return through litterfall. Similar findings have been reported from exotic conifer stands in New Zealand where throughfall reaching the soil under Douglas fir contained twice as much K as litterfall (Will, 1959), while atmospheric deposition plus canopy leaching delivered three times more K to the soil than the internal nutrient recycling via litterfall (van Langenhove et al., 2020). Nutrient input by throughfall and forest floor leachates may be critical in sustaining forest productivity, particularly in ecosystems characterized by low soil nutrient availability, such as kauri forests (Steward & Beveridge, 2010; Verkaik et al., 2006).

4.2 | Effect of *P. agathidicida* infection on nutrient concentrations and fluxes

4.2.1 | Throughfall

With increasing soil *P. agathidicida* DNA concentration, throughfall nutrient concentration and fluxes decreased (Figure 4a–d). The same pattern has been found for dissolved N and C concentration and fluxes (Schwendenmann & Michalzik, 2019). High variability in water yield (700–1350 mm; Figure 3a) may partly explain the lack of a relationship between soil *P. agathidicida* DNA concentration and water yield (Schwendenmann & Michalzik, 2019). Further, differences in canopy density between trees (Table 1) did not seem to be large enough to affect throughfall water yield.

The following processes may explain the observed decline in nutrient concentration and fluxes in throughfall:

1. Decline in leaf nutrient concentration, which reduced the amount of nutrients leached from foliage. Like many other *Phytophthora* species, *P. agathidicida* infects the roots. Fine roots become necrotized; then, the pathogen may progress up the root and into the root crown, or invade xylem vessels (Jung et al., 2018). Root dieback and/or the obstruction of nutrient and water transport via the xylem limits the uptake of nutrients. The visible symptoms are often chlorosis and wilting of

leaves, a thinning of the crown, and eventually the death of the infected tree (Oßwald et al., 2014). Studies reported lower leaf N concentrations in infected *Quercus robur* (Jönsson, 2004; Jönsson et al., 2003) and *Fagus sylvatica* seedlings (Fleischmann et al., 2004), which suggests a reduction in nutrient uptake, and/or translocation of nutrients from the leaves to the roots to sustain root production and/or produce defensive compounds (Jönsson, 2006). A ~ 30% reduction in Mg leaf content was observed in *Fagus sylvatica* seedlings infected with *Phytophthora citricola* (Wang et al., 2003). In contrast, substantial root dieback of *Quercus robur* seedlings following *Phytophthora quercina* and *Phytophthora cactorum* infection did not have a significant effect on leaf nutrient concentrations (Ca, Mg, K, Mn, Fe, S) (Jönsson, 2004).

- Loss of foliage due to pathogen infection diminished the interaction of water with foliar surfaces, thus decreasing throughfall nutrient concentrations (Parker, 1983). Trees with higher soil *P. agathidicida* DNA concentration showed considerable canopy thinning (Figure 5), reducing washoff (McDowell & Likens, 1988; Parker, 1990), and foliar leaching (of potentially nutrient-depleted foliage) (Czech & Kappen, 1997; Tukey, 1970).
- Follicolous lichens were found on some leaves shed by kauri trees characterized by higher soil *P. agathidicida* DNA concentrations. In a blue oak woodland in California, trees with epiphytic lichens had higher N, Ca, Mg, Na, and Cl depositions under their canopy than trees where lichens were removed (Knops et al., 1996). Based on this finding, we speculate that the loss of follicolous lichens may partly contribute to the decrease in nutrient deposition.

4.2.2 | Stemflow

Soil *P. agathidicida* DNA concentration had no significant effect on stemflow nutrient concentrations and fluxes. This may partly be

explained by the high variability in stemflow nutrient concentrations and water yield between trees masking the effect of *P. agathidicida* infection. Given that stems of highly infected trees showed a higher cover of vines, bryophytes (moss) and lichens (Fig. S1), we were expecting a change in stemflow nutrient concentrations and fluxes. Previous studies have shown that epiphytic lichens and bryophytes affect stemflow chemistry by selective uptake or release of nutrients (Jordan et al., 1980; Lang et al., 1976). For example, the depletion of stemflow N, P, and Ca fluxes in a subtropical montane forest has been attributed to nutrient uptake by the epiphytic bryophytes (Liu et al., 2002).

4.2.3 | Forest floor leachate

Forest floor leachate concentrations (Mg, Na, S, and Si) and fluxes (Ca, Si; Figure 4c,d) decreased significantly with increasing soil *P. agathidicida* DNA concentration.

The observed decrease in nutrients can partly be explained by the following processes:

- Higher plant nutrient uptake due to changes in density and composition of understory plant communities. Understory plant density was higher underneath kauri trees characterized by high soil *P. agathidicida* DNA concentrations and severe canopy dieback. Studies have shown that dieback or removal of dominant trees can lead to greater productivity of the remaining species (Klein & Perkins, 1987) and higher plant nutrient uptake. Understory plant species did not show any signs of dieback and are functionally different to kauri and kauri-associated plant species (van der Westhuizen, 2014; Wyse et al., 2014). Several kauri-associated species belong to the family of *Ericaceae* (Wyse et al., 2014). The replacement of these often slow-growing “stress tolerant” plant species (Grime, 1977) by species with higher nutrient requirements

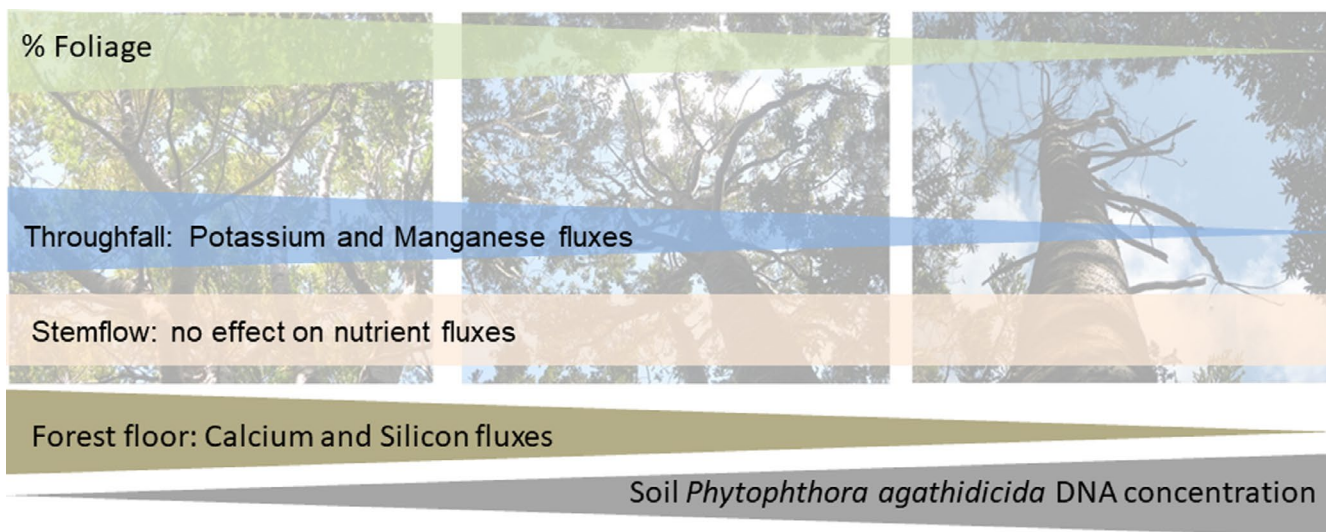


FIGURE 5 Effect of increasing soil *P. agathidicida* DNA concentration and decreasing foliage cover on nutrient fluxes

may have resulted in an enhanced uptake of nutrients from the forest floor.

- Lower forest floor nutrient reservoirs due to lower leaf litter nutrient concentrations, decrease in litterfall and decline in forest floor depth. Lower fine root N, P, Ca, Mg, and Fe content have been found in European beech seedlings with *P. citricola* (Wang et al., 2003). Differences in microbial and fungal communities between asymptomatic and symptomatic mature kauri trees (Byers et al., 2020) and changes in microclimatic conditions (van der Westhuizen, 2014) are likely to affect nutrient cycling.

4.3 | Long-term implications of a decline in canopy- and forest floor-derived nutrient fluxes

Given that throughfall and forest floor leachate are an important pathway of plant-available nutrients to the soil in this kauri-dominated stand, the significant reduction in throughfall K, Mn and in forest floor Ca and Si fluxes may have long-term implications on ecosystem processes, tree health, and host pathogen interactions (Oliva et al., 2014). Potassium plays a critical role in biochemical and physiological processes such as enzyme activation, amino acid synthesis, and carbohydrate metabolism, influencing plant growth and susceptibility of host plants to pathogens and insects (Amtmann et al., 2008; Dordas, 2008; Marschner, 2012). Manganese is critical for overall plant vigor and an important regulator of plant responses to stress and disease resistance (Dordas, 2008). Manganese inhibits (1) aminopeptidase production, reducing the supply of essential amino acids for fungal growth and (2) pectin methylesterase, a fungal enzyme that degrades host cell walls (Dordas, 2008; Marschner, 2012). Some studies have shown that Si can restrict fungal hyphae penetration by creating a physical barrier, or by producing antifungal compounds (Dordas, 2008). Further, Si has been identified as a beneficial nutrient for many vascular plant species, in particular under stress conditions (Pontigo et al., 2015). Calcium ions preserve the structural integrity and functionality of membranes and cell walls, increase host resistance to invasion, and inhibit mycelial growth and zoospore release (Sugimoto et al., 2010). Calcium applications have been shown to reduce Phytophthora root rot in citrus, avocado, and oak (Campanella et al., 2002; Messenger et al., 2000; Serrano et al., 2013).

Root or bark infection by Phytophthora species results in root dieback, which affects nutrient and water uptake (Oßwald et al., 2014). Root dieback hampering nutrient uptake, plus the lack of plant-available nutrients in the soil, may accelerate the decline in tree health. Further, repairing infected tissues and/or building up plant defenses increases the carbon and nutrient requirement of the host (Olivia et al., 2014). Leaf nutrient deficiency and leaf loss induced weakening of plant defenses may facilitate the buildup of pathogen inoculum and produce further damages (Olivia et al., 2014). In summary, a long-term reduction in plant-available K, Mn, Si, and Ca may accelerate the decline in tree health and increase the susceptibility of kauri to *P. agathidicida* infection.

ACKNOWLEDGMENTS

We would like to thank Nick Waipara and Lee Hill for their help in selecting the study area and visual tree health assessment. We are grateful to Justin Singh and Gavin Lear for the quantification of soil *P. agathidicida* concentrations and all students who supported us in the field and laboratory, in particular Donald Van der Westhuizen, Inge Althuizen, Marie Carco, Kelly Timmermans, and Michael Meredyth-Young. Nico Blaubauch (Friedrich-Schiller-University Jena) is thanked for the ICP-OES analyses. The sampling was conducted under permit WS639 from Auckland Council to Nick Waipara and Luitgard Schwendenmann.

The project was partly funded through a University of Auckland, School of Environment, PBRF grant and budgetary resources of the Department of Soil Science, Friedrich-Schiller-University, Jena, Germany.

CONFLICT OF INTEREST

The authors declare that there is no conflict of interest.

AUTHOR CONTRIBUTION

Luitgard Schwendenmann: Conceptualization (equal); Data curation (equal); Formal analysis (equal); Funding acquisition (equal); Investigation (equal); Methodology (equal); Project administration (equal); Resources (equal); Validation (equal); Visualization (equal); Writing-original draft (equal); Writing-review & editing (equal). **Beate Michalzik:** Conceptualization (equal); Data curation (equal); Formal analysis (equal); Funding acquisition (equal); Investigation (equal); Methodology (equal); Project administration (equal); Validation (equal); Visualization (equal); Writing-original draft (equal); Writing-review & editing (equal).

DATA AVAILABILITY STATEMENT

The data that support the findings of this study are openly available in figshare at <https://doi.org/10.17608/k6.auckland.13632380.v1>

ORCID

Luitgard Schwendenmann  <https://orcid.org/0000-0002-2290-3003>

Beate Michalzik  <https://orcid.org/0000-0001-7858-1771>

REFERENCES

- Alenäs, I., & Skärby, L. (1988). Throughfall of plant nutrients in relation to crown thinning in a Swedish coniferous forest. *Water, Air, and Soil Pollution*, 38, 223–237. <https://doi.org/10.1007/BF00280754>
- Amtmann, A., Troufflard, S., & Armengaud, P. (2008). The effect of potassium nutrition on pest and disease resistance in plants. *Physiol Plantarum*, 133, 682–691. <https://doi.org/10.1111/j.1399-3054.2008.01075.x>
- Batjes, N. H. (1996). Total carbon and nitrogen in the soils of the world. *European Journal of Soil Science*, 47, 151–163. <https://doi.org/10.1111/j.1365-2389.1996.tb01386.x>
- Beever, J. E., Coffey, M. D., Ramsfield, T. D., Dick, M. A., & Horner, I. J. (2009). Kauri (*Agathis australis*) under threat from Phytophthora? In: Fourth Meeting of IUFRO Working Party S07.02.09 General Technical Report PSW-GTR-221, 74–85.

- Bloomfield, C. (1955). A study of podzolisation. *Journal of Soil Science*, 6, 284–292. <https://doi.org/10.1111/j.1365-2389.1955.tb00852.x>
- Bradshaw, R. E., Bellgard, S. E., Black, A., Burns, B. R., Gerth, M. L., McDougal, R. L., Scott, P. M., Waipara, N. W., Weir, B. S., Williams, N. M., Winkworth, R. C., Ashcroft, T., Bradley, E. L., Dijkwel, P. P., Guo, Y., Lacey, R. F., Mesarich, C. H., Panda, P., & Horner, I. J. (2020). *Phytophthora agathidicida*: Research progress, cultural perspectives and knowledge gaps in the control and management of kauri dieback in New Zealand. *Plant Pathology*, 69, 3–16. <https://doi.org/10.1111/ppa.13104>
- Burdon, J. J., & Laine, A. (2019). *Evolutionary Dynamics of Plant-Pathogen Interactions* (383 pp). Cambridge University Press.
- Byers, A., Condon, L., O'Callaghan, M., Waipara, N., & Black, A. (2020). Soil microbial community restructuring and functional changes in ancient kauri (*Agathis australis*) forests impacted by the invasive pathogen *Phytophthora agathidicida*. *Soil Biology & Biochemistry*, 150, 108016. <https://doi.org/10.1016/j.soilbio.2020.108016>
- Campanella, V., Ippolito, A., & Nigro, F. (2002). Activity of calcium salts in controlling *Phytophthora* root rot of citrus. *Crop Protection*, 21, 751–756. [https://doi.org/10.1016/S0261-2194\(02\)00032-7](https://doi.org/10.1016/S0261-2194(02)00032-7)
- Cape, J. N. (1993). The use of ³⁵S to study sulphur cycling in forests. *Environmental Geochemistry and Health*, 15, 113–118. <https://doi.org/10.1007/BF02627829>
- Carlisle, A., Brown, A. H. F., & White, E. J. (1966). The organic matter and nutrient elements in the precipitation beneath a sessile oak (*Quercus Petraea*) canopy. *Journal of Ecology*, 54, 87–98. <https://doi.org/10.2307/2257660>
- Cole, D. W., & Rapp, M. (1981). Elemental cycling in forest ecosystems. In D. E. Reichle (Ed.), *Dynamic Properties of Forest Ecosystems* (pp. 341–409). Cambridge University Press.
- Crockford, R. H., & Richardson, D. P. (2000). Partitioning of rainfall into throughfall, stemflow and interception: Effect of forest type, ground cover and climate. *Hydrological Processes*, 14, 2903–2920. <https://doi.org/10.1002/1099-1085200011/12>
- Czech, D., & Kappen, L. (1997). Field measurements of carbon leaching from leaves in beech and alder forests of northern Germany. *Flora*, 192, 209–215. [https://doi.org/10.1016/S0367-2530\(17\)30783-1](https://doi.org/10.1016/S0367-2530(17)30783-1)
- Dale, V. H., Joyce, L. A., McNulty, S., Neilson, R. P., Ayres, M. P., Flannigan, M. D., Hanson, P. J., Irland, L. C., Lugo, A. E., Peterson, C. J., Simberloff, D., Swanson, F. J., Stocks, B. J., & Wotton, B. M. (2001). Climate change and forest disturbances: Climate change can affect forests by altering the frequency, intensity, duration, and timing of fire, drought, introduced species, insect and pathogen outbreaks, hurricanes, windstorms, ice storms, or landslides. *BioScience*, 51, 723–734. <https://doi.org/10.1641/0006-35682001051>
- Dordas, C. (2008). Role of nutrients in controlling plant diseases in sustainable agriculture. A review. *Agronomy for Sustainable Development*, 28, 33–46. <https://doi.org/10.1051/agro:2007051>
- Dunkerley, D. (2014). Stemflow on the woody parts of plants: Dependence on rainfall intensity and event profile from laboratory simulations. *Hydrological Processes*, 28, 5469–5482. <https://doi.org/10.1002/hyp.10050>
- Ecroyd, C. E. (1982). Biological flora of New Zealand 8. *Agathis australis* (D. don) Lindl. (Araucariaceae) kauri. *N Z J Bot*, 20, 17–36.
- Enright, N. J. (1987). Stemflow as a nutrient source for nikau palm (*Rhopalostylis sapida*) in a New Zealand forest. *Australian Journal of Ecology*, 12, 17–24. <https://doi.org/10.1111/j.1442-9993.1987.tb00923.x>
- Enright, N. J. (2001). Nutrient accessions in a mixed conifer–angiosperm forest in northern New Zealand. *Austral Ecology*, 26, 618–629. <https://doi.org/10.1046/j.1442-9993.2001.01128.x>
- Enright, N. J., & Ogden, J. (1987). Decomposition of litter from common woody species of kauri (*Agathis australis* Salisb.) forest in northern New Zealand. *Aust J Eco.*, 12, 109–124.
- Esler, A. E. (1983). Forest and scrubland zones of the Waitakere range, Auckland. *Tane*, 29, 109–117.
- Farrell, E. P., van den Beuken, R., Boyle, G. M., Cummins, T., & Aherne, J. (1998). Interception of seasalt by coniferous and broadleaved woodland in a maritime environment in western Ireland. *Chemosphere*. [https://doi.org/10.1016/S0045-6535\(97\)10159-X](https://doi.org/10.1016/S0045-6535(97)10159-X)
- Fleischmann, F., Göttlein, A., Rodenkirchen, H., Lütz, C., & Oßwald, W. (2004). Biomass, nutrient and pigment content of beech (*Fagus sylvatica*) saplings infected with *Phytophthora citricola*, *P. cambivora*, *P. pseudosyringae* and *P. undulata*. *Forest Pathology*, 34, 79–92. <https://doi.org/10.1111/j.1439-0329.2004.00349.x>
- Flower, C. E., & Gonzalez-Meler, M. (2015). Responses of temperate forest productivity to insect and pathogen disturbances. *Annual Review of Plant Biology*, 66, 547–569. <https://doi.org/10.1146/annurev-arplant-043014-115540>
- Forti, M. C., & Moreira-Nordemann, L. (1991). Rainwater and throughfall chemistry in a “terra firme” rain forest: Central Amazonia. *Journal of Geophysical Research: Atmospheres*, 96, 7415–7421. <https://doi.org/10.1029/90JD02170>
- Fowler, A. M. (2015). The relationship between throughfall, stemflow, and rainfall in a northern New Zealand native forest headwater catchment. *Journal of Hydrology (New Zealand)*, 54, 109–124.
- Galloway, J. N., Likens, G. E., Keene, W. C., & Miller, J. M. (1982). The composition of precipitation in remote areas of the world. *Journal of Geophysical Research: Oceans*, 87, 8771–8786. <https://doi.org/10.1029/JC087iC11p08771>
- Goodenough, A. E., & Goodenough, A. S. (2012). Development of a rapid and precise method of digital image analysis to quantify canopy density and structural complexity. *ISRN Ecology*, 619842. <https://doi.org/10.5402/2012/619842>
- Grime, J. P. (1977). Evidence for the existence of three primary strategies in plants and its relevance to ecological and evolutionary theory. *American Naturalist*, 111, 1169–1194. <https://doi.org/10.1086/283244>
- Hayward, B. W. (1976). Lower miocene stratigraphy and structure of the Waitakere ranges and the Waitakere group. *New Zealand Journal of Geology and Geophysics*, 19, 871–895. <https://doi.org/10.1080/00288306.1976.10420745>
- Hill, L., & Waipara, N. (2017). Kauri Dieback Report 2017: an Investigation into the Distribution of Kauri Dieback and Implications for its Future Management within the Waitakere Ranges Regional Park. Version 2: Update June 2017. Auckland Council. 40 pp. <https://our.auckland.aucklandcouncil.govt.nz/media/16649/kauri-dieback-waitakere-ranges-report.pdf>
- Horner, I. J. (1984). *The role of Phytophthora cinnamomi and other fungal pathogens in the establishment of Kauri and Kahikatea*. MSc Thesis. University of Auckland.
- Jamieson, M. A., Trowbridge, A. M., Raffa, K. F., & Lindroth, R. L. (2012). Consequences of climate warming and altered precipitation patterns for plant-insect and multitrophic interactions. *Plant Physiology*, 160, 1719–1727. <https://doi.org/10.1104/pp.112.206524>
- Johnston, P. R., Horner, I. J., & Beever, R. E. (2003). *Phytophthora cinnamomi* in New Zealand's Indigenous Forests. In J. A. McComb, & Hardy, G.E.St.J. and Tommerup, I.C. (Eds.), *Phytophthoras in Forests and Natural Ecosystems: Second Meeting of the International Union of Forest Research Organizations (IUFRO) Working Party S07.02.09* (pp. 41–48). Murdoch University Print.
- Jönsson, U. (2004). *Phytophthora* species and oak decline – can a weak competitor cause significant root damage in a nonsterilized acidic forest soil? *New Phytologist*, 162, 211–222. <https://doi.org/10.1111/j.1469-8137.2004.01016.x>
- Jönsson, U. (2006). A conceptual model for the development of *Phytophthora* disease in *Quercus robur*. *New Phytologist*, 171, 55–68. <https://doi.org/10.1111/j.1469-8137.2006.01743.x>

- Jönsson, U., Jung, T., Rosengren, U., Nihlgård, B., & Sonesson, K. (2003). Pathogenicity of Swedish isolates of *Phytophthora quercina* to *Quercus robur* in two different soils. *New Phytologist*, 158, 355–364. <https://doi.org/10.1046/j.1469-8137.2003.00734.x>
- Jordan, C., Golley, F., Hall, J., & Hall, J. (1980). Nutrient scavenging of rainfall by the canopy of an Amazonian rain forest. *Biotropica*, 12, 61–66. <https://doi.org/10.2307/2387774>
- Jung, T., Pérez-Sierra, A., Durán, A., Jung, M. H., Balci, Y., & Scanu, B. (2018). Canker and decline diseases caused by soil- and airborne *Phytophthora* species in forests and woodlands. *Persoonia Mol. Phylogenetics Evol Fungi*, 40, 182–220. <https://doi.org/10.3767/persoonia.2018.40.08>
- Kauri Dieback Programme. (2013). Hygiene Procedures for Kauri Dieback. <https://www.kauridieback.co.nz/media/1358/gral-hygiene-procedures-kauridieback-v2.pdf> (Accessed 15 March 2015).
- Kautz, M., Meddens, A. J. H., Hall, R. J., & Arneeth, A. (2017). Biotic disturbances in Northern Hemisphere forests – a synthesis of recent data, uncertainties and implications for forest monitoring and modelling. *Global Ecol Biogeogr*, 26, 533–552. <https://doi.org/10.1111/geb.12558>
- Keene, W. C., Pszenny, A. A. P., Galloway, J. N., & Hawley, M. E. (1986). Sea-salt corrections and interpretation of constituent ratios in marine precipitation. *Journal of Geophysical Research: Atmospheres*, 91, 6647–6658. <https://doi.org/10.1029/JD091iD06p06647>
- Klein, R. M., & Perkins, T. D. (1987). Cascades of causes and effects of forest decline. *Ambio*, 16, 86–93.
- Knops, J. M. H., Nash, T. H. III, & Schlesinger, W. H. (1996). The influence of epiphytic lichens on the nutrient cycling of an oak woodland. *Ecological Monographs*, 66, 159–179. <https://doi.org/10.2307/2963473>
- Kopáček, J., Fluksová, H., Hejzlar, J., Kaňa, J., Porcal, P., & Turek, J. (2017). Changes in surface water chemistry caused by natural forest dieback in an unmanaged mountain catchment. *Science of the Total Environment*, 584–585, 971–981. <https://doi.org/10.1016/j.scitotenv.2017.01.148>
- Lang, G. E., Reiners, W. A., & Heier, R. K. (1976). Potential alteration of precipitation chemistry by epiphytic lichens. *Oecologia*, 25, 229–241. <https://doi.org/10.1007/BF00345100>
- Ledgard, S. F., & Upsdell, M. P. (1991). Sulphur inputs from rainfall throughout New Zealand. *New Zealand Journal of Agricultural Research*, 34, 105–111. <https://doi.org/10.1080/00288233.1991.10417799>
- Levia, D. F., & Frost, E. E. (2006). Variability of throughfall volume and solute inputs in wooded ecosystems. *Progress in Physical Geography: Earth and Environment*. <https://doi.org/10.1177/0309133306071145>
- Levia, D. F. Jr, & Herwitz, S. R. (2002). Winter chemical leaching from deciduous tree branches as a function of branch inclination angle in central Massachusetts. *Hydrological Processes*, 16, 2867–2879. <https://doi.org/10.1002/hyp.1077>
- Likens, G. E. (2013). *Biogeochemistry of a forested ecosystem*, 3rd ed. Springer.
- Lilienfein, J., & Wilcke, W. (2004). Water and element input into native, agri- and silvicultural ecosystems of the Brazilian savanna. *Biogeochemistry*, 67, 183–212. <https://doi.org/10.1023/B:BIOG.0000015279.48813.9d>
- Liu, W., John, E. D. F., & Xu, Z. (2002). Nutrient fluxes in bulk precipitation, throughfall and stemflow in montane subtropical moist forest on Ailao Mountains in Yunnan. *Journal of Tropical Ecology*, 18, 527–548. <https://doi.org/10.1017/S0266467402002353>
- Lovett, G. M., Christenson, L. M., Groffman, P. M., Jones, C. G., Hart, J. E., & Mitchell, M. J. (2002). Insect defoliation and nitrogen cycling in forests. *BioScience*, 52, 335–341. <https://doi.org/10.1641/0006-3568>
- Macinnis-Ng, C., Flores, E. E., Müller, H., & Schwendenmann, L. (2014). Throughfall and stemflow vary seasonally in different land-use types in a lower montane tropical region of Panama. *Hydrological Processes*, 28, 2174–2184. <https://doi.org/10.1002/hyp.9754>
- Marschner, P. (2011). *Marschner's Mineral Nutrition of Higher Plants*, 3rd ed. (pp. 684). Elsevier/Academic Press.
- McClain, M. E., Boyer, E. W., Dent, C. L., Gergel, S. E., Grimm, N. B., Groffman, P. M., Hart, S. C., Harvey, J. W., Johnston, C. A., Mayorga, E., McDowell, W. H., & Pinay, G. (2003). Biogeochemical hot spots and hot moments at the interface of terrestrial and aquatic ecosystems. *Ecosystems*, 6, 301–312. <https://doi.org/10.1007/s10021-003-0161-9>
- McDowell, W. H., Gines-Sanchez, C., Asbury, C. E., & Ramos-Perez, C. R. (1990). Influence of seasalt aerosols and long range transport on precipitation chemistry at El Verde, Puerto Rico. *Atmospheric Environment*, 24A, 2813–2821. [https://doi.org/10.1016/0960-1686\(90.90168-M](https://doi.org/10.1016/0960-1686(90.90168-M)
- McDowell, W., & Likens, G. E. (1988). Origin, composition, and flux of dissolved organic carbon in the Hubbard Brook Valley. *Ecological Monographs*, 58, 177–195. <https://doi.org/10.2307/2937024>
- Messenger, B., Menge, J. A., & Pond, E. (2000). Effects of gypsum soil amendments on Avocado growth, soil drainage, and resistance to *Phytophthora cinnamomi*. *Plant Disease*, 84, 612–616. <https://doi.org/10.1094/PDIS.2000.84.6.612>
- Mimura, A. M. S., Almeida, J. M., Vaz, F. A. S., de Oliveira, M. A. L., Ferreira, C. C. M., & Silva, J. C. J. (2016). Chemical composition monitoring of tropical rainwater during an atypical dry year. *Atmospheric Research*, 169, 391–399. <https://doi.org/10.1016/j.atmosres.2015.11.001>
- Moslehi, M., Habashi, H., Khormali, F., Ahmadi, A., Brunner, I., & Zimmermann, S. (2019). Base cation dynamics in rainfall, throughfall, litterflow and soil solution under Oriental beech (*Fagus orientalis* Lipsky) trees in northern Iran. *Annals of Forest Science*, 76, 55. <https://doi.org/10.1007/s13595-019-0837-8>
- Nilsson, I. (1978). The influence of *Dasychira pudibunda* (Lepidoptera) on plant nutrient transports and tree growth in a beech *Fagus sylvatica* forest in Southern Sweden. *Oikos*, 30, 133–148. <https://doi.org/10.2307/3543534>
- Oliva, J., Stenlid, J., & Martinez-Vilalta, J. (2014). The effect of fungal pathogens on the water and carbon economy of trees: Implications for drought-induced mortality. *New Phytologist*, 203, 1028–1035. <https://doi.org/10.1111/nph.12857>
- Oßwald, W., Fleischmann, F., Rigling, D., Coelho, A. C., Cravador, A., Diez, J., Dalio, R. J., Horta Jung, M., Pfanz, H., Robin, C., Sipos, G., Solla, A., Cech, T., Chambery, A., Diamandis, S., Hansen, E., Jung, T., Orlikowski, L. B., Parke, J., ... Werres, S. (2014). Strategies of attack and defence in woody plant-*Phytophthora* interactions. *For Path*, 44, 169–190. <https://doi.org/10.1111/efp.12096>
- Pallardy, S. G. (2007). *Physiology of woody plants*. Academic Press.
- Park, A., & Cameron, J. L. (2008). The influence of canopy traits on throughfall and stemflow in five tropical trees growing in a Panamanian plantation. *Forest Ecology and Management*. <https://doi.org/10.1016/j.foreco.2007.12.025>
- Parker, G. G. (1983). Throughfall and stemflow in the forest nutrient cycle. *Advances in Ecological Research*, 13, 57–133. [https://doi.org/10.1016/S0065-2504\(08\)60108-7](https://doi.org/10.1016/S0065-2504(08)60108-7)
- Parker, G. G. (1990). Evaluation of dry deposition, pollutant damage, and forest health with throughfall studies. In A. A. Lucier, & S. G. Haines (Eds.), *Mechanisms of Forest Response to Acidic Deposition* (pp. 10–61). Springer.
- Pierret, M., Viville, D., Dambrine, E., Cotel, S., & Probst, A. (2019). Twenty-five year record of chemicals in open field precipitation and throughfall from a medium-altitude forest catchment (Strengbach – NE France): An obvious response to atmospheric pollution trends. *Atmospheric Environment*, 202, 296–314. <https://doi.org/10.1016/j.atmosenv.2018.12.026>
- Podger, F. D., & Newhook, F. J. (1971). *Phytophthora cinnamomi* in indigenous plant communities in New Zealand. *N Z J Bot*, 9, 625–638. <https://doi.org/10.1080/0028825X.1971.10430225>

- Pontigo, S., Ribera, A., Gianfreda, L., Mora, M. L., Nikolic, M., & Cartes, P. (2015). Silicon in vascular plants: Uptake, transport and its influence on mineral stress under acidic conditions. *Planta*, *242*, 23–37. <https://doi.org/10.1007/s00425-015-2333-1>
- Pretzsch, H., Biber, P., Uhl, E., Dahlhausen, J., Rötzer, T., Caldentey, J., Koike, T., Con, T., Chavanne, A., Seifert, T., Du Toit, B., Farnden, C., & Pauleit, S. (2015). Crown size and growing space requirement of common tree species in urban centres, parks, and forests. *Urban Forestry & Urban Greening*, *14*, 466–479. <https://doi.org/10.1016/j.ufug.2015.04.006>
- Qualls, R. G., Haines, B. L., Swank, W. T., & Tyler, S. W. (2000). Soluble organic and inorganic nutrient fluxes in clearcut and mature deciduous forests. *Soil Science Society of America Journal*, <https://doi.org/10.2136/sssaj2000.6431068x>
- Reed, D. G. (1984). *The nutrient cycle of a kauri forest watershed, Huapai, New Zealand*. MSc thesis. University of Auckland.
- Rouault, G., Candau, J., Lieutier, F., Nageleisen, L., Martin, J., & Warzée, N. (2006). Effects of drought and heat on forest insect populations in relation to the 2003 drought in Western Europe. *Annals of Forest Science*, *63*, 613–624. <https://doi.org/10.1051/forest:2006044>
- Sangster, K. B. (1986). *Throughfall and stemflow in New Zealand kauri (Agathis australis (D. University of Auckland . Don) Lindl.)*. Master thesis. University of Auckland.
- Schowalter, T. D., Noriega, J. A., & Tscharrntke, T. (2018). Insect effects on ecosystem services—Introduction. *Basic and Applied Ecology*, *26*, 1–7. <https://doi.org/10.1016/j.baae.2017.09.011>
- Schroth, G., Elias, M. E. A., Uguen, K., Seixas, R., & Zech, W. (2001). Nutrient fluxes in rainfall, throughfall and stemflow in tree-based land use systems and spontaneous tree vegetation of central Amazonia. *Agriculture Ecosystems & Environment*, *87*, 37–49. [https://doi.org/10.1016/S0167-8809\(00\)00294-2](https://doi.org/10.1016/S0167-8809(00)00294-2)
- Schroth, G., Silva, L., Wolf, M., Teixeira, W., & Zech, W. (1999). Distribution of throughfall and stemflow in multi-strata agroforestry, perennial monoculture, fallow and primary forest in central Amazonia, Brazil. *Hydrological Processes*, *13*, 1423–1436.
- Schulze, E. D., Beck, E., Buchmann, N., Clemens, S., Müller-Hohenstein, K., & Scherer-Lorenzen, M. (2019). *Plant Ecology*, 2nd ed. Springer.
- Schwendenmann, L., & Michalzik, B. (2019). Dissolved and particulate carbon and nitrogen fluxes along a *Phytophthora agathidicida* infection gradient in a kauri (*Agathis australis*) dominated forest. *Fungal Ecology*, *42*, 100861. <https://doi.org/10.1016/j.funeco.2019.08.005>
- Scott, P., & Williams, N. (2014). *Phytophthora diseases in New Zealand forests*. *N Z J for*, *59*, 14–21.
- Searle, E., & Mayhill, R. D. (1981). *City of volcanoes. A geology of Auckland*. 2nd edn. Longman Paul.
- Seidl, R., Thom, D., Kautz, M., Martin-Benito, D., Peltoniemi, M., Vacchiano, G., Wild, J., Ascoli, D., Petr, M., Honkaniemi, J., Lexer, M. J., Trotsiuk, V., Mairota, P., Svoboda, M., Fabrika, M., Nagel, T. A., & Rey, C. P. O. (2017). Forest disturbances under climate change. *Nature Climate Change*, *7*, 395–402. <https://doi.org/10.1038/nclimate3303>
- Serrano, M. S., Fernández-Rebollo, P., De Vita, P., & Sánchez, M. E. (2013). Calcium mineral nutrition increases the tolerance of *Quercus ilex* to *Phytophthora* root disease affecting oak rangeland ecosystems in Spain. *Agroforestry Systems*, *87*, 173–179. <https://doi.org/10.1007/s10457-012-9533-5>
- Shaw, M. W., & Osborne, T. M. (2011). Geographic distribution of plant pathogens in response to climate change. *Plant Pathology*, *60*, 31–43. <https://doi.org/10.1111/j.1365-3059.2010.02407.x>
- Silvester, W. B., & Orchard, T. A. (1999). The biology of kauri (*Agathis australis*) in New Zealand. I. Production, biomass, carbon storage, and litter fall in four forest remnants. *N Z J Bot*, *37*, 553–571.
- Singh, J., Curran-Cournane, F., Waipara, N., Schwendenmann, L., & Lear, G. (2017). Comparison of methods used to detect the organism responsible for kauri dieback, *Phytophthora agathidicida*, from soil samples. Auckland Council technical report, TR2017/019. <https://knowledgeauckland.org.nz/media/1154/tr2017-019-comparison-of-methods-kauri-dieback-with-erratum.pdf>
- Soil Survey Staff (2014). *Keys to Soil Taxonomy*, 12th ed. USDA-Natural Resources Conservation Service.
- Staelens, J., De Schrijver, A., Oyarzún, C., & Lust, N. (2003). Comparison of dry deposition and canopy exchange of base cations in temperate hardwood forests in Flanders and Chile. *Gayana Botanica*, *60*, 9–16. <https://doi.org/10.4067/S0717-66432003000100003>
- Staelens, J., De Schrijver, A., & Verheyen, K. (2007). Seasonal variation in throughfall and stemflow chemistry beneath a European beech (*Fagus sylvatica*) tree in relation to canopy phenology. *Canadian Journal of Forest Research*, *37*, 1359–1372. <https://doi.org/10.1139/X07-003>
- Steward, G. A., & Beveridge, A. E. (2010). A review of New Zealand kauri (*Agathis australis* (D. Don) Lindl.): Its ecology, history, growth and potential for management for timber. *N Z J Sci*, *40*, 33–59.
- Sugimoto, T., Watanabe, K., Yoshida, S., Aino, M., Furiki, M., Shiono, M., Matoh, T., & Biggs, A. R. (2010). Field application of calcium to reduce *Phytophthora* stem rot of soybean, and calcium distribution in plants. *Plant Disease*, *94*, 812–819. <https://doi.org/10.1094/PDIS-94-7-0812>
- Than, D. J., Hughes, K. J. D., Boonhan, N., Tomlinson, J. A., Woodhall, J. W., & Bellgard, S. E. (2013). A TaqMan real-time PCR assay for the detection of *Phytophthora* 'taxon Agathis' in soil, pathogen of Kauri in New Zealand. *For. Path.*, *43*, 324–330. <https://doi.org/10.1111/efp.12034>
- Thom, D., & Seidl, R. (2016). Natural disturbance impacts on ecosystem services and biodiversity in temperate and boreal forests. *Biological Reviews*, *91*, 760–781. <https://doi.org/10.1111/brv.12193>
- Tukey, H. B. (1970). The leaching of substances from plants. *Annu Rev Plant Physiol*, *21*, 305–324. <https://doi.org/10.1146/annurev.pp.21.060170.001513>
- Van der Westhuizen, W. D. (2014). *Ecosystem processes within a Phytophthora taxon Agathis (PTA) affected kauri forest*. MSc thesis. University of Auckland.
- Van Langenhove, L., Verryck, L. T., Bréchet, L., Courtois, E. A., Stahl, C., Hofhansl, F., Bauters, M., Sardans, J., Boeckx, P., Fransen, E., Peñuelas, J., & Janssens, I. A. (2020). Atmospheric deposition of elements and its relevance for nutrient budgets of tropical forests. *Biogeochemistry*, *149*, 175–193. <https://doi.org/10.1007/s10533-020-00673-8>
- Van Stan, J. T., & Gordon, D. A. (2018). Mini-Review: Stemflow as a Resource Limitation to Near-Stem Soils. *Frontiers in Plant Science*, *9*, 248. <https://doi.org/10.3389/fpls.2018.00248>
- Van Stan, J. T., & Stubbins, A. (2018). Tree-DOM: Dissolved organic matter in throughfall and stemflow. *Limnol Oceanogr Lett*, *3*, 199–214. <https://doi.org/10.1002/lo2.10059>
- Verkaik, E., Gardner, R. O., & Braakhekke, W. G. (2007). Site conditions affect seedling distribution below and outside the crown of Kauri trees (*Agathis australis*). *New Zealand J Ecol*, *31*, 13–21.
- Verkaik, E., Jongkind, A. G., & Berendse, F. (2006). Short-term and long-term effects of tannins on nitrogen mineralisation and litter decomposition in kauri (*Agathis australis* (D. Don) Lindl.) forests. *Plant and Soil*, *287*, 337–345. <https://doi.org/10.1007/s11104-006-9081-8>
- Waipara, N., Hill, S., Hill, L. M. W., Hough, E. G., & Horner, I. (2013). Surveillance methods to determine tree health, distribution of kauri dieback disease and associated pathogens. *New Zealand Plant Protection*, *66*, 235–241. <https://doi.org/10.30843/nzpp.2013.66.5671>
- Wang, Z. Y., Göttlein, A., Rodenkirchen, H., Fleischmann, F., & Oßwald, W. (2003). The influence of *Phytophthora citricola* on rhizosphere soil solution chemistry and the nutritional status of European beech seedlings. *Journal of Phytopathology*, *151*, 365–368. <https://doi.org/10.1046/j.1439-0434.2003.00729.x>

- Wardle, D. A., & Bardgett, R. D. (2008). Indirect effects of invertebrate herbivory on the decomposer subsystem. In W. W. Weisser & E. Siemann (Eds.), *Insects and ecosystem function*. Ecological studies (analysis and synthesis), Vol 173. Springer.
- Weir, B. S., Paderes, E. P., Anand, N., Uchida, J. Y., Pennycook, S. R., Bellgard, S. E., & Beever, R. E. (2015). A taxonomic revision of Phytophthora Clade 5 including two new species, *Phytophthora agathidicida* and *P. cocois*. *Phytotaxa*, 205, 21–38. <https://doi.org/10.11646/phytotaxa.205.1.2>
- Westman, W. E. (1978). Inputs and cycling of mineral nutrients in a coastal subtropical Eucalypt forest. *Journal of Ecology*, 66, 513–531. [https://doi.org/10.1016/0378-1127\(83\)90022-1](https://doi.org/10.1016/0378-1127(83)90022-1)
- Will, G. M. (1959). Nutrient return in litter and rainfall under some exotic conifer stands in New Zealand. *Journal of Agricultural Research*, 2, 719–734.
- Wyse, S. V., Burns, B. R., & Wright, S. D. (2014). Distinctive vegetation communities are associated with the long-lived conifer *Agathis*

australis (New Zealand kauri, Araucariaceae) in New Zealand rainforests. *Austral Ecology*, 39, 388–400.

SUPPORTING INFORMATION

Additional supporting information may be found online in the Supporting Information section.

How to cite this article: Schwendenmann L, Michalzik B. Impact of *Phytophthora agathidicida* infection on canopy and forest floor plant nutrient concentrations and fluxes in a kauri-dominated forest. *Ecol Evol*. 2021;11:4310–4324. <https://doi.org/10.1002/ece3.7326>